

NEW ZEALAND  
FESTIVAL 

FESTIVAL.CO.NZ



# KICK UP THE ARTS!

NEW ZEALAND FESTIVAL 2016

24 FEB — 18 MAR 2016

NEW ZEALAND FESTIVAL

## THE CULTURE CLUB

WE BELIEVE ART MAKES LIFE **BETTER**. IT CAN  
BRIGHTEN OUR DAYS, BRING US **TOGETHER**  
AND CHANGE OUR LIVES. IF YOU BELIEVE THIS TOO, **JOIN US**

Join The Culture Club from just \$5 per month or \$60 a year and we'll thank you for your kind donation with these great supporter perks.

### BEST SEATS

The Culture Club Pre-sale for New Zealand Festival and other events.

### EXCLUSIVE EVENTS

Access to interesting events for interested people, year-round.

### ARTY CONTENT

Made just for you, straight to your inbox.

Sign up online at [festival.co.nz/join](http://festival.co.nz/join) or on the Booking Form on page 92.

[Twitter](#) [Facebook](#) [CULTURECLUBNZ](#) [#UPYOURARTS](#) [FESTIVAL.CO.NZ](http://FESTIVAL.CO.NZ)



**creative***nz*  
ARTS COUNCIL OF NEW ZEALAND TOI AOTEAROA

## Supporting New Zealand arts

Creative New Zealand is proud to support the development of New Zealand's outstanding artistic talent at the  
2016 New Zealand Festival

ARTS COUNCIL OF NEW ZEALAND TOI AOTEAROA

Creative New Zealand is the national arts development agency, developing, investing in and advocating for the arts  
[www.creativenz.govt.nz](http://www.creativenz.govt.nz) | [info@creativenz.govt.nz](mailto:info@creativenz.govt.nz)

Image: The Devil's Half Acre, by Trick of the Light Productions. Photo: Tom Hoyle.

# FESTIVAL PARTNERS

## CREATIVE PARTNERS

### LEADER



### ACTIVATOR



### SUPPORTERS

Assignment:

sputnik.

Stem  
content creators

DOT • loves data



Venue Partner

## DESTINATION PARTNERS

### LEADER



### ACTIVATORS



### SUPPORTERS

WILLIS BOND & Co



Tourism Partner

## ENGAGEMENT PARTNERS

### LEADER



### ACTIVATOR



### SUPPORTERS



HIGGINS.

stuff.co.nz

SUNDAY STAR★TIMES

## INTERNATIONAL PARTNERS

Asia New Zealand Foundation  
Australia Council for the Arts  
Australian High Commission  
British Council  
British High Commission  
Canada Council for the Arts  
Creative Scotland  
Culture Ireland  
Embassy of Argentina  
Embassy of France  
Embassy of Spain  
Embassy of the Republic of Poland  
Embassy of the United States of America  
Goethe-Institut  
New Zealand-France Friendship Fund

## CORPORATE PATRONS

Air New Zealand  
BERL  
Building Solutions  
Caffe L'affare  
Craigs Investment Partners  
Deloitte  
JacksonStone and Partners  
Primeproperty Group

## GRANTS

Carterton District Council  
Four Winds Foundation  
Greytown Trust Lands  
Health Quality & Safety Commission  
Hutt City Council  
Infinity Foundation  
Kāpiti Coast District Council  
Mana Community Grants Foundation

Masterton District Council  
Lands Trust Masterton  
Ōtaki Community Board  
Performing Arts Foundation of Wellington  
Porirua City Council  
Royal Society of New Zealand  
Trust House Community Enterprise  
Upper Hutt City Council

## PATRONS

**PLATINUM**  
Geoff and Vivien Atkinson  
Mary and Peter Bliggs CNZM  
Helena and James Brow  
MR Camp and AE Gaskell  
Sir Roderick and Gillian, Lady Deane  
Peter and Carolyn Dlessi  
David Goddard and Leslie Theron  
Chris and Kathy Parkin

Richard Stone and Dennis Roberts  
Roy and Renate Savage  
Teena, Lady Todd  
The Wallace Foundation  
Gael Webster and Tim Brown

### GOLD

Denis and Verna Adam  
John and Jackie Archibald  
Paul and Sheryl Baines  
Dennis and Valerie Barnes  
Kaye and Maurice Clark  
M. Doucas  
Sir David Gascoigne and Dame Patsy Reddy  
John Luxton and Mary Scholtens  
Adam and Kate Thornton

### SILVER

John Allen and Janie Pack  
Ian Cassels and Caitlin Taylor  
Stephen Kós and Jocelyn Afford



## EXPERIENCE PARTNERS

### LEADER



### ACTIVATORS

MinterEllison  
RuddWatts



### SUPPORTERS



Rex Nicholls and  
Kerry Prendergast  
van der Boyes Family Trust  
Paul Ridley-Smith and  
Felicity Wong

### BRONZE

Pip and Peter Bennett  
Colin and Nallini Baruch  
Peter Chemis and  
Jane McDiarmaid  
Dinah and Robert Dobson  
Matthew Dravitzki  
Cathy Ferguson and  
Michiel During  
Patricia Fitzgerald  
Ruth and Peter Graham  
Heather Hayden and Tony White  
Timberly Hughes and  
Allan Ransley  
Jane Komink  
Adie and Matthew McClelland  
Chris and John McGrath  
Ross and Treena Martin

## INNOVATION PARTNERS

### LEADER



### ACTIVATOR



### SUPPORTERS



Richard T Nelson  
Mark O'Regan and Nicola Saker  
Fay Paterson and Brett Gawn  
Mike and Mazz Scannell  
Gordon and Marie Shroff  
Cella and Ashley Smout  
Elisabeth Welson and  
David Langman  
Leona Wilson

### PATRON

Malcolm and Ginny Abernethy  
James and Louise Aitken  
Lady Norma Beattie  
Margie Beattie and John Barlow  
Virginia Breen  
Errol and Jennifer Clark  
Al and VP Diem  
Allison Franks and John Bristed  
Ian and Jocelyn Fraser  
Rhona Fraser and  
Campbell McLachlan  
Marion and Paul Frater  
Susan Freeman-Greene

## CORE PARTNER

**Absolutely Positively  
Wellington City Council**  
Me Heke Ki Pōneke

### CORE FUNDER



### MAJOR GRANTS



## ACCESSIBILITY PARTNERS



Michael and Kristin Gibson  
Sharon and Tom Greally  
Jane and Michael Hall  
Carole A Hicks  
Prof Les Holborow  
Carolyn Hooper and Terry Friel  
Tomas and Jan Huppert  
Howard Greive and  
Gabrielle McKone  
Susan and Nigel Isaacs  
Mary Marshall  
Jane Meares and Denis Clifford  
Rachel Metson and Paul Foley  
Renata Minetto  
Bronwyn Monopoli  
Rob Nicoll  
Sue Paterson  
Hilary Patton and  
Shirley Gainsford  
Sam Perry and Iona Anderson  
Joe and Jackie Pope  
Michael and Lynda Potts  
Elizabeth Purves  
Laraine and Peter Rothenberg

John and Rachel Ryan  
Margaret and Roger Saintry  
Judy Salmond  
Cathy Scott  
Conrad Shanly  
Jill Shepherd  
Ross Steele  
Tim Stephens and Sarah Bartlett  
Dr and Mrs W S Taylor  
Ruth and Simon Treacy  
Phillipa Urlich and Denis Lander  
Mark and Sally Verblest  
Cella Wade-Brown  
Janet Waite  
Margaret Wallace  
Carla and John Wild  
Meg Williams and Oily Bisson  
Jane Wright

Anonymous (20)



# HOW TO GET THE MOST OUT OF YOUR FESTIVAL

## DATES FOR YOUR DIARY

### THE CULTURE CLUB PRE-SALE

FRI 23 OCT — SUN 1 NOV 2015

Join The Culture Club at [festival.co.nz/join](http://festival.co.nz/join) or page 92

### EARLY BIRD TICKETS AVAILABLE

FRI 23 OCT — MON 30 NOV 2015 – FOR CULTURE CLUB SUPPORTERS

MON 2 NOV — MON 30 NOV 2015 – FOR GENERAL PUBLIC

### PUBLIC SALES

MON 2 NOV 2015

### ROYAL EDINBURGH MILITARY TATTOO

THU 18 — SUN 21 FEB 2016

### NEW ZEALAND FESTIVAL

FRI 26 FEB — SUN 20 MAR 2016

### WRITERS WEEK

TUE 8 — SUN 13 MAR 2016

## EARLY BIRD TICKETS

### NEW FOR 2016!

If you book before 30 November, you'll get access to Early Bird prices on the best seats.

Early Bird prices are marked throughout this brochure like this:  
EARLY BIRD A\$59

Early Bird tickets are limited, so get in quick to enjoy the best prices.

## TOP 10 FESTIVAL TIPS

### 1. WANT MORE?

Go online to [festival.co.nz](http://festival.co.nz). There's video galore and lots more content.

### 2. ENTERTAINING THE KIDS?

Check out *For the Birds* and our Family section.

### 3. NO CASH?

No problem. Look out for the **FREE** icon and you won't pay a cent.

### 4. OUT IN THE REGIONS?

Check out our touring shows in Festival On The Road.

### 5. NEED TO LIVEN UP YOUR LUNCH BREAK?

Enjoy free Artist Talks, 1pm, Upstairs at the St James Theatre.

### 6. MAKING A WEEKEND OF IT?

Go to our handy calendar to plan your Festival.

### 7. LOST?

There's a map to help you find your way.

### **8. LOOKING FOR A SUNDOWNER?**

Come grab a drink with us at the Festival Bar (see below).

### **9. WANT THE INSIDE WORD?**

Sign up to our enews for deals and more at [festival.co.nz](http://festival.co.nz).

### **10. LOVE FUN?**

Us too. So let's get together and kick up the arts!

## **FESTIVAL BAR**

### **MOJO AT THE ST JAMES THEATRE**

Come down in the daytime for coffee, or head over after your Festival show for drinks and post-show hangouts. Open late most nights during the Festival, the Bar is in the new boutique Mojo cafe at the St James Theatre on Courtenay Place. Natter the night away to a live soundtrack provided by some of Wellington's finest local musicians.

Visit [festival.co.nz](http://festival.co.nz) for opening times.



# WELCOME!



Tēnā koutou tēnā koutou tēnā tātou katoa. Art is one of the most powerful aspects to being human. Our ability to communicate through language, movement, music or imagery gives us the unique quality of an imaginative realm. It is in this realm we create the stories that drive our lives, our loves and our connections to each other – our humanness.

Festivals are a great time to immerse yourself in the work of great artists and perhaps to learn vital truths about yourself reflected in their stories. As we look back on 30 years of this Festival, there is no doubt it has enriched the life of Wellington and New Zealand. It has been a portal through which people have experienced some of

the world's leading artists and thinkers. It has been a place in which people from different cultures have connected. And it has been a place in which we have explored our evolving sense of identity. I've certainly seen my own life transformed through a 25 year association with this Festival and feel privileged to have been afforded moments of sublime revelation and joy – I still vividly remember sitting in Robert Lepage and Ex Machina's *Seven Streams of the River Ota* in 1998, transfixed by the masterful storytelling and profound observations on the nature of people.

Hundreds of thousands of acts of faith, generosity, joy and risk-taking have brought the Festival on this 30-year journey and it is testament to the artists, audiences, partners and staff who have all played a part. It is now our challenge to take this into the future and to inspire the next generations of artists and audiences. To ensure that the role of the arts in our society remains a compelling fact. This year's programme includes some artists and companies who have been audience favourites in past years, as well as fresh and bold works from artists who have not been to New Zealand before. Please take the time to explore as much as you can – you will be richly rewarded. And as Samuel Beckett said, "Dance first. Think later. It's the natural order."

**SHELAGH MAGADZA**  
*Artistic Director*

# FESTIVAL TURNS 30

Share your memories on Twitter and Facebook at NZFestival

## KERRY PRENDERGAST

*Executive Chair*

A Festival highlight for me from the past 30 years was *Sutra*, a wonderful collaboration by choreographer Sidi Larbi Cherkaoui and Turner Prize-winning artist Antony Gormley. Featuring Buddhist monks from the original Shaolin Temple in China, and a set comprised of 21 wooden boxes, it exuded a sublime calm.

## SUE PATERSON

*Executive Director*

A memorable highlight from the 1996 Festival was one of Europe's most distinguished musical ensembles, Jordi Savall's Hesperion XX, who are renowned for Spanish and Italian music prior to 1800. Wellington Town Hall resonated with glorious music and song as they performed masterpieces from a golden age on authentic, period instruments.





## Hold on to your toilet seats!

We're totally over-excited to bring the magic of a people powered playground to the Welly waterfront, for the New Zealand Festival.

All the way from Spain, fantastical rides and actors will whisk you and your family into a quirky, recycled world of wonder.

So come and play!

### Contact Festival Playground

Sat 27 February – Sun 20 March  
(except Mondays)

Frank Kitts Park

Freeeeeeeeeeee

See page 64

*Contact*

**Wellington  
City Council,  
proud partner  
of the New  
Zealand Festival  
for 30 years**

Our Arts and Culture Fund supported Strike with their Battery 100 project bringing together and training local drummers for The Big Bang. Image: Wellington NZ.com.

WELLS



## **PŌWHIRI**

*Nau mai haere mai ki te Taurima o Aotearoa  
Welcome to the New Zealand Festival*

*Kei ngā kaiwaiata, ngā kaiwhakaari ngā kaikanikani me ngā  
kaimātakitaki Whakatau mai rā  
To the artists and to our audiences  
We greet you*

Join us for an early morning pōwhiri to welcome international and local artists to Te Taurima o Aotearoa/New Zealand Festival, in this, our 30th anniversary year. Look out over the splendour of the

harbour as we celebrate Aotearoa's unique culture and the coming together of artists and audiences from all over the world.

## **WHEN**

FRI 26 FEB, 7.30AM

## **WHERE**

TE WHAREWAKA, ODLIN'S PLAZA, WELLINGTON WATERFRONT



**PARTNERED BY KIWIBANK**

**LE GRAND CONTINENTAL®**

**A CHOREOGRAPHY BY SYLVAIN**

**ÉMARD | SYLVAIN ÉMARD DANSE**  
*(Canada)*

**FREE**

**“It’s like snowflakes out here – we’re all different, but we come together into one big happy family”**

**Brad Faubion, dancer in Portland**

When is a crowd a work of art? When you make everyone in it feel like dancing. Events like 2014’s *The Big Bang* have given the Festival a reputation for putting on the best opening night parties, and 2016 is going to be no exception, with a 30-minute dance spectacular created by French-Canadian choreographer Sylvain Émard and performed by volunteers from the Wellington region.

Inspired by line dancing and contemporary dance, *Le Grand Continental®* is a mass dance performance. This unforgettable experience has been to cities around Canada and the US, and in Mexico and South Korea, and to bring it to Civic Square we’ve hand-



picked 150 amateur dancers aged between 10 and 75 who've been trained by Sylvain until they can bust a move like the best of them.

After the official performance, the whole crowd will be asked to join in for a giant freestyle dance party with music from Chocolate Box Deluxe. You dancing? Because we're asking.

**WHEN**

FRI 26 FEB, 8.30PM

**WHERE**

CIVIC SQUARE

**DURATION**

30MINS WITH DANCE PARTY TO FOLLOW

*A Sylvain Émard Danse and Festival TransAmériques co-production.*

**PARTNERED BY**



**WITH SUPPORT FROM**





## TANZTHEATER WUPPERTAL PINA BAUSCH

“No one had a greater influence on postwar European dance” *The Guardian*

Celebrate the art of the great German choreographer Pina Bausch in this special season.

### PINA BAUSCH (1940 — 2009)

Madonna and David Bowie are fans, and so is St Vincent. Actor Alan Rickman said she “pins you to your seat. It’s like she’s connected to your bloodstream or something”. Sculptor Antony Gormley called her “an inspiration to me for the last 20 years”.

Pina Bausch was the “high priestess of dance theatre” (*The Guardian*), with such a loyal following that, when a retrospective of her work was performed as part of the London 2012 Festival ahead of the Olympic Games, there were fans raiding their bank accounts and clearing their diaries for the nearly 30 hours needed to see all 10 shows.

Now, for the first time, as part of a season that also includes Wim Wenders’ award-winning *Pina* documentary, you can experience her work live on stage in New Zealand – and discover for yourself why it inspires such devotion.

Tanztheater Wuppertal Pina Bausch, the company Bausch led until her death in 2009, will be performing two of her signature creations,

*Café Müller* (1978) and *The Rite of Spring* (1975), each full of emotion and intensity that aims straight for the heart.



**THE TODD CORPORATION SEASON OF  
CAFÉ MÜLLER/  
THE RITE OF SPRING  
TANZTHEATER WUPPERTAL  
PINA BAUSCH (Germany)**

Set to the music of Henry Purcell, the first half of this “astonishing pairing” (*The Guardian*) is *Café Müller*, a take on Bausch’s recurring theme of strained relationships that is quieter and more intimate than the work that follows. It was inspired by memories of the café her parents owned when she was a child, and excerpts from it featured in Pedro Almodovar’s 2002 film *Talk to Her*, which you can also see as part of the Festival’s Bausch season.

According to choreographer Matthew Bourne, the second half of this pairing is “the only true masterpiece” ever set to Stravinsky’s 1913 *The Rite of Spring* ballet score. In Bausch's hands, the music soundtracks a spectacular study in primitivism, with the sexes confronting each other on a stage covered in soil and the 29 dancers streaked with sweat and dirt by the end of their performance.

*Presented in memory of Sir John Todd, dance lover and Festival Patron (1927 — 2015).*

**WHEN**

THU 17 — SAT 19 MAR, 7.30PM

SUN 20 MAR, 6.30PM

## **WHERE**

ST JAMES THEATRE

## **TICKETS**

EARLY BIRD P\$139, P\$149, A\$109, B\$79

## **DURATION**

1HR 45MINS (INC 20MIN INTERVAL)

## **ARTIST TALK**

FRI 18 MAR

## **PARTNERED BY**



## **IN COOPERATION WITH**



## **IN ASSOCIATION WITH**





## **PINA: A FILM FOR PINA BAUSCH**

*Director:* **WIM WENDERS**

*Germany | 2011 | 1hr 43mins | PG |  
with subtitles*

“A memorial that is also a defiance of mortality –  
completely alive in every dimension ”

*The New York Times*

There aren't many great works of art about great artists. High on the list is Wim Wenders' documentary *Pina: A Film for Pina Bausch*, which we are screening at selected cinemas around the country in November 2015 to whet your appetite for our 2016 Bausch season.

With camerawork “as sublime as the performances” (*Time Out*), the legendary German film-maker will take you on a sensual, visually stunning journey of discovery onto the stage with the Tanztheater Wuppertal Pina Bausch company. You will also venture out of the theatre for performances in the city and surrounding areas of Wuppertal – the place that for 35 years was the home and centre for Bausch's creativity. Four of Bausch's dance works, including *Café Müller* and *The Rite of Spring*, are at the fore of the film, intercut with company interviews and archive footage of this pioneer of modern dance.

*Pina* screenings courtesy of Entertainment One.

### **WELLINGTON**

**WHEN:** TUE 10 NOV, 6.30PM

**WHERE:** EMBASSY THEATRE (3D)

**TICKETS:** \$19

(PLUS \$1 FOR 3D GLASSES)

**AUCKLAND****WHEN:** THU 19 NOV, 6.45PM**WHERE:** RIALTO CINEMAS, NEWMARKET (3D)**TICKETS:** \$19

(PLUS \$1 FOR 3D GLASSES)

**NEW PLYMOUTH****WHEN:** WED 25 NOV, 7.30PM**WHERE:** LEN LYE CENTRE CINEMA (2D)**TICKETS:** \$17**CHRISTCHURCH****WHEN:** SUN 29 NOV, 7.45PM**WHERE:** ACADEMY GOLD CINEMA (2D)**TICKETS:** \$17





## **DANCING DREAMS: IN THE FOOTSTEPS OF PINA BAUSCH**

*Directors:* **RAINER HOFFMANN  
AND ANNE LINSEL**

*Germany | 2010 | 1hr 30mins | PG |  
with subtitles*

**FREE**

Many of the teenagers chosen to learn one of Pina Bausch's dance pieces in *Dancing Dreams* had never heard of her. One admits he decided to take part after watching the film *Billy Elliot*. A delightful study of amateurs giving their all under pressure, the documentary follows 40 students from high schools across Wuppertal over a 10-month period as they prepare for a public performance. It was filmed shortly before Bausch's death and includes her final interview.

**WHEN:** SUN 28 FEB, 11AM AND 2PM

**WHERE:** CITY GALLERY WELLINGTON

## AND THE SHIP SAILS ON

Director: **FEDERICO FELLINI**

Italy | 1983 | 2hrs 8mins | PG |  
with subtitles



**FREE**

Pina Bausch's filmography extends beyond dance documentaries to roles in dramatic features by two major directors. In *And the Ship Sails On*, she's one of a number of passengers on a luxury liner shortly before the start of World War I. From its bravura opening sequence, in which sepia-tinted silent movie footage slowly acquires colour and sound, the film is a fantastical, unpredictable tour de force — "a bold testament to the artifice of studio-made movies ... a succession of mostly comic commentaries on art and artists, whose self-absorption Mr Fellini finds both wickedly funny and very moving" (*The New York Times*).

**WHEN:** SUN 6 MAR, 11AM AND 2PM

**WHERE:** CITY GALLERY WELLINGTON



## TALK TO HER

Director: **PEDRO ALMODÓVAR**

*Spain | 2002 | 1hr 52mins | R13 |  
with subtitles*

**FREE**

Pina Bausch appears as herself in the opening scene of *Talk to Her*, performing in *Café Müller* while two strangers meet in the audience. Each of these strangers will become a caregiver for a woman trapped in a coma, and if this sounds a restrained premise for a drama, count on Almodóvar to prove otherwise. Obsession, moral jeopardy, soulful comedy and sexual transgression: restraint is not this director's thing at all. *Talk to Her* "combines improbable melodrama (gored bullfighters, comatose ballerinas) with subtly kinky bedside vigils and sensational denouements, and yet at the end, we are undeniably touched" (Roger Ebert).

**WHEN:** SUN 13 MAR, 11AM AND 2PM

**WHERE:** CITY GALLERY WELLINGTON



**NEW ZEALAND FESTIVAL AND WETA DIGITAL PRESENT  
JAZZ AT LINCOLN CENTER ORCHESTRA  
WITH WYNTON MARSALIS RESIDENCY *(United States)***

*“The greatest jazz ensemble working today”  
Chicago Tribune*

It’s swing time. Jazz doesn’t get any better than the Jazz at Lincoln Center Orchestra with Wynton Marsalis. They’re the gold standard — 15 of the finest jazz soloists and ensemble players in the world. And for this Festival residency Wellington gets them all to itself.

The JLCO is the Orchestra of the Jazz at Lincoln Center organisation in New York, whose mission is to entertain, enrich and expand a global community for jazz through performance, education and advocacy. Marsalis — a jazz powerhouse and one of the world’s great trumpeters — leads the Orchestra and is the organisation’s managing and artistic director. He first appeared at the New Zealand Festival with his quintet in 1988, then again in 2000 leading the JLCO.

Now we’ve invited him and the Orchestra back for an extended stay to help us celebrate our 30th birthday with three concerts (including two with the New Zealand Symphony Orchestra), a special performance for young people and masterclasses with the New

Zealand School of Music. For Marsalis, “musicality and sociability are always linked” (*The Daily Telegraph*), making him and the Jazz at Lincoln Center Orchestra ideal Festival guests. Help us welcome them.

**PARTNERED BY**



**WITH SUPPORT FROM**



EMBASSY OF  
THE UNITED STATES  
OF AMERICA



## SWING SYMPHONY NO 3

BY WYNTON MARSALIS

JAZZ AT LINCOLN CENTER ORCHESTRA WITH  
NEW ZEALAND SYMPHONY ORCHESTRA

“Jazz is not merely music, jazz is America,” Wynton Marsalis has said. At the centre of this concert of orchestral pieces is his third symphony, which takes you on a journey through American jazz history. Commissioned by the Berliner Philharmoniker, the New York Philharmonic, the Los Angeles Philharmonic and London’s Barbican Centre, *Swing Symphony* is a “stunning achievement” (*The Arts Desk*) that traverses the first half of the 20th century – from ragtime, through the big band era, to bebop and beyond. With the NZSO conducted by Matthew Coorey, the other pieces in this all-American programme are Aaron Copland's *Appalachian Spring* and Leonard Bernstein's *West Side Story Dances*. Feel the force when these world-class orchestras come together for two nights of glorious music.

### WHEN

THU 10 — FRI 11 MAR, 7.30PM

### WHERE

MICHAEL FOWLER CENTRE

### TICKETS

EARLY BIRD P\$119, P\$129, A\$99, B\$79, C\$59, D\$39

### DURATION

2HRS, 10MINS (INC INTERVAL)



## **JAZZ FOR YOUNG PEOPLE**

Kiwi students will be introduced to the infectious energy of swing at this concert as part of our SchoolFest education programme. Jazz at Lincoln Center's Jazz for Young People concerts are renowned for their success in spreading the gospel of jazz by illuminating the music and its development. During this concert, full of warmth and humour, the Orchestra won't just play, but will also discuss the music, aiming their commentary "at young listeners unfamiliar with jazz, as well as those already smitten" (*Chicago Tribune*). To book, and for further details, see our SchoolFest brochure, now available.

**WHEN:** FRI 11 MAR, 11AM

**WHERE:** MICHAEL FOWLER CENTRE

**TICKETS:** \$18 FOR SCHOOLFEST STUDENTS ONLY

## **A NIGHT WITH JAZZ AT LINCOLN CENTER ORCHESTRA**



The Jazz at Lincoln Center's resident orchestra since 1988, the JLCO has a vast repertoire at its fingertips. From rare historic compositions to their own commissions, it takes in most of the jazz greats, including Duke Ellington, Count Basie, Mary Lou Williams, Charles Mingus, Chick Corea and many others – not least Wynton Marsalis himself. New Yorkers have the JLCO on their doorstep, but for the rest of us it's a rare and precious opportunity. Seize it.

### **WHEN**

SAT 12 MAR, 7.30PM

### **WHERE**

MICHAEL FOWLER CENTRE

### **TICKETS**

EARLY BIRD P\$89, P\$99, A\$79, B\$59, C\$49, D\$39

## NEW ZEALAND SCHOOL OF MUSIC MASTERCLASSES

During this Wellington residency, as part of their commitment to jazz education, Wynton Marsalis and other musicians from the Jazz at Lincoln Center Orchestra will be giving guidance to students from the New Zealand School of Music jazz programme in a day of masterclasses. A Marsalis masterclass might include “history, humour, politics, observation, music theory, philosophy, analogies, admonitions and affirmations” (*The Times-Picayune*) — all peppered with personal anecdotes. We thank Marsalis and the Jazz at Lincoln Center Orchestra for giving the students this unique experience.



## SUFJAN STEVENS

*(United States)*

“An artist towering above most of his peers”

*Financial Times*

Grief is “transformed into something brimming with life” (*The Quietus*) in this concert based around Sufjan Stevens’ latest album, *Carrie & Lowell*.

One of the most admired musicians of the last decade, Stevens ascended even greater creative heights in 2015, with *Carrie & Lowell* — inspired by the death of his mother — widely declared his most impressive achievement yet and among the year’s best albums. Similar praise was heaped upon the gigs *The Guardian* called “truly spectacular”, where he performed the album in full.

Experience Stevens and his band’s “radiant rendering” (*The Irish Times*) of *Carrie & Lowell*, with its “masterful and carefully shorn” lyrics and music (*Pitchfork*), along with a selection of other songs from across his remarkable career.

### WHEN

SUN 6 — MON 7 MAR, 8PM

### WHERE

MICHAEL FOWLER CENTRE

## **TICKETS**

EARLY BIRD A\$79, A\$89, B\$69, C\$59

## **PARTNERED BY**



## **WITH SUPPORT FROM**







**THE WELLINGTON AIRPORT  
SEASON OF  
FOR THE BIRDS**

**MARK ANDERSON, JONY  
EASTERBY, KATHY HINDE,  
MARCUS MCSHANE AND TANE  
UPJOHN-BEATSON, JOHANN  
NORTJE AND CAMERON MAY,  
ULF PEDERSEN, AND ESTHER TEW  
(England/Wales/New Zealand)**

“Beautiful, unexpected and alive!”

The Royal Society for the Protection of Birds (UK)

“I cannot think of another art experience that has  
bettered it” Jay Griffiths, author

As dusk falls, gather the whānau together for an adventure in the bush, at this celebration of light, flight and birdsong from the makers of 2014 Festival hit *Power Plant*. This time the team has been joined by New Zealand artists to create an enchanting walk-through art experience in the native forest of Otari-Wilton’s Bush.

Whether it’s our iconic kiwi or Sirocco the superstar kākāpō, Angry Birds or Twitter, we have a special connection with our feathered friends. Through ingenious use of light, sound and moving sculpture, the artists will get you thinking about the mystery and beauty of the

avian world — and why it should be protected. Take some time out from the madness of modern life to wander through the night and celebrate these wonders of nature.

### **IMPORTANT INFORMATION**

This is an all-weather event and will proceed unless you are advised otherwise. Please wear appropriate footwear. There are steps and hills on the walk. This event is great for kids, but avoid prams or strollers as the track is not suitable in parts. Limited free parking will be provided at Ian Galloway Park with a shuttle to the start of the walk. Please allow at least 30 minutes before your session time for this. If you can, use alternative forms of transport. The No.14 bus travels between Rongotai and Wilton via the central city.

### **WHEN**

THU 3 — SAT 19 MAR (EXCEPT MON)

8PM — 10.15PM, SESSIONS START EVERY 15 MINUTES

### **WHERE**

OTARI-WILTON'S BUSH

### **TICKETS**

ADULT \$35 CHILD \$19

FAMILY (2 ADULTS, 2 CHILDREN) \$100

FAMILY (1 ADULT, 2 CHILDREN) \$65

### **PARTNERED BY**



### **WITH SUPPORT FROM**



**LA VERITÀ**  
**WRITTEN AND**  
**DIRECTED BY**  
**DANIELE FINZI**  
**PASCA**  
**COMPAGNIA**  
**FINZI PASCA**  
**(Switzerland)**



“This show is sure to please anyone who believes life is worth dreaming” *El Observador*, Montevideo

*La Verità* is an experience that'll have you gasping as much at its imaginative feats as its physical ones. Daniele Finzi Pasca has overseen not one but two Winter Olympics closing ceremonies so knows how to stage a spectacular show.

This one has you entering the world of a surrealist painting, with its heady mix of acrobatics, theatre, dance and music performed against the monumental Salvador Dalí backdrop that sparked the show. But where Dalí was inspired by nightmares, Compagnia Finzi Pasca's "gaze is always charmed, inspired by dreams". This is a dream you won't want to wake from, as the agility of mind and body displayed by these cirque veterans leaves you breathless.

© Salvador Dalí, Fundación Gala-Salvador Dalí.

## **WHEN**

WED 2 — SAT 5 MAR, 7.30PM

SUN 6 — MON 7 MAR, 6PM

SAT 5 MAR, 1.30PM

**WHERE**

ST JAMES THEATRE

**TICKETS**

EARLY BIRD A\$79, A\$89, B\$69, C\$49, D\$39

**DURATION**

2HRS 5MINS (INC 20MIN INTERVAL)

**PARTNERED BY**



**DEAD DOG IN A SUITCASE  
(AND OTHER LOVE SONGS)  
A NEW BEGGAR'S OPERA  
KNEEHIGH WITH LIVERPOOL  
EVERYMAN & PLAYHOUSE  
(United Kingdom)**

“Fiendishly clever ... a constant barrage of visual, theatrical and musical surprises” *The Stage*

Busting with wit, wonder and weirdness, this was one of *The Guardian's* Top 10 theatre shows of 2014. The ever-inventive, multi-talented performers of Tony Award-nominated Kneehigh are renowned as creators of wildly energetic and hugely popular shows. Following *Tristan & Yseult* (2006) and *The Wild Bride* (2012), they return to the Festival with a reworking of John Gay's bawdy 18th-century musical satire *The Beggar's Opera*, updated with a new score that mixes Renaissance polyphony, folk, heavy metal, ska, grime and dubstep. Who wouldn't want to hear how *that* works?

**Please Note:** This show contains strobe lighting. Recommended for ages 14+

**WHEN**

FRI 26 — SAT 27 FEB, 8PM

SUN 28 FEB, 1.30PM AND 7.30PM

MON 29 FEB — WED 2 MAR, 7PM

**WHERE**

OPERA HOUSE



## **TICKETS**

EARLY BIRD A\$69, A\$79, B\$59, C\$39

## **DURATION**

2HRS 15MINS (INC 15MIN INTERVAL)

*The performance on Monday 29 February at 7pm will be Audio Described.*

## **ARTIST TALK**

MON 29 FEB

## **PARTNERED BY**

MinterEllison  
RuddWatts  
L A W Y E R S

**CINEASTAS**  
**MARIANO PENSOTTI**  
**(Argentina)**



*“A marvel of theatrical wit and ingenuity”*  
*The New York Times*

A hot shot director making a Hollywood blockbuster comedy; an experimental documentary-maker with a cult following and an identity crisis; a disgruntled McDonald’s employee plotting a corporate bashing revenge flick; and a writer toiling on a doomed second screenplay for a rich French producer. Downstairs, you’ll follow the work, lives and loves of four film-makers over a year in Buenos Aires. Upstairs, the films they are making come to life. The stunning two-tier staging and director Mariano Pensotti’s inventive “filmic drama” proved a hit at New York’s Under the Radar Festival, and will thrill Wellington’s many film fans as well as its theatre lovers.

**WHEN**

THU 10 — SUN 13 MAR  
TUE 15 — WED 16 MAR 8PM

**WHERE**

OPERA HOUSE

## **TICKETS**

EARLY BIRD A\$69, A\$79, B\$65

## **DURATION**

1HR 45MINS (NO INTERVAL)

*Spanish with English surtitles.*

## **PARTNERED BY**

**Stem**  
content creators

## **WITH SUPPORT FROM**





**TE PŌ**  
**THEATRE STAMPEDE AND**  
**NIGHTSONG PRODUCTIONS**  
*(New Zealand)*

“A modern parable, part-Fellini, part-Beckett, part-Dalí  
and with more than a little Laurel and Hardy”  
*Metro on 360 – A Theatre of Recollections*

A policeman, a priest and a blind man look for clues that will lead them to the missing playwright Bruce Mason. Where has he gone? What made him leave his desk and vanish into the night? And what is that seagull at the window trying to say? For all of *Te Pō*’s odd characters, finding Mason has become a matter of life, death and catching a big fish.

*Te Pō* is an eloquent and surprising comedy punctuated by Māori showband songs. It’s about searching for someone you have loved and lost and finding them again. From the same out-of-the-box team that produced the award-winning *360 – a theatre of recollections*, including writer Carl Bland and director Ben Crowder, *Te Pō* leaves no theatrical stone unturned in its mission to give us a unique view of the world. Find something to hook your heart on at this original, extraordinary and moving show.

*Co-produced by New Zealand Festival, Auckland Arts Festival, Theatre Stampede and Nightsong Productions. Production animals designed, created and sponsored by Main Reactor.*

**WHEN**

TUE 1 — SAT 5 MAR, 7.30PM, SAT 5 MAR, 1.30PM

**WHERE**

SOUNDINGS THEATRE, TE PAPA

**TICKETS**

EARLY BIRD A\$59, A\$69

**DURATION**

1HR 25MINS (NO INTERVAL)

*The performance on Thursday 3 March at 7.30pm will be New Zealand Sign Language Interpreted.*

**ARTIST TALK**

THU 3 MAR

**PARTNERED BY****WITH SUPPORT FROM**

**EVERY BRILLIANT THING**  
**BY DUNCAN MACMILLAN**  
**WITH JONNY DONAHOE**  
**DIRECTED BY GEORGE PERRIN**  
**PAINES PLOUGH AND PENTABUS**  
**THEATRE COMPANY**  
*(United Kingdom)*



“Heart-wrenching, hilarious ... Possibly one of the funniest plays you'll ever see” *The Guardian*

You're six years old. Mum's in hospital. Dad says she's “done something stupid”. She finds it hard to be happy. So you start to make a list of everything that's brilliant about the world. Everything that's worth living for.

1. Ice Cream
2. Kung Fu Movies
3. Laughing so hard you shoot milk out your nose
4. Construction cranes
5. Me

A new play about depression and the lengths we will go to for those we love. Based on true and untrue stories.

Recommended for ages 14+

**WHEN**

WED 2 — SAT 5 MAR, 8PM

SAT 5 MAR, 4PM

**WHERE**

HANNAH PLAYHOUSE

## **DURATION**

1HR

## **TICKETS**

EARLY BIRD GA\$49, GA\$59

## **PARTNERED BY**







**SMALL METAL  
OBJECTS**  
**BACK TO BACK THEATRE**  
*(Australia)*

“Turns the notion of theatre and the everyday inside out ... a pure, open-hearted, complex and breathtaking production” *The Sydney Morning Herald*

This ingenious theatrical gem unfolds amid the pedestrian traffic of the city. On a raised seating bank with individual sets of headphones, the audience is wired in to an intensely personal drama being played out somewhere in the crowd. One of Australia’s most original theatre companies brings you the story of a drug deal and an existential crisis.

**WHEN**

WED 16 MAR, 5.30PM

THU 17 — SAT 19 MAR, 12.30PM AND 5.30PM

**WHERE**

UNDER THE SAILS, OUTSIDE TSB BANK ARENA

**TICKETS**

EARLY BIRD GA\$45, GA\$49

**DURATION**

50MINS

**ARTIST TALK**

TUE 15 MAR

**PARTNERED BY**

**springload** 

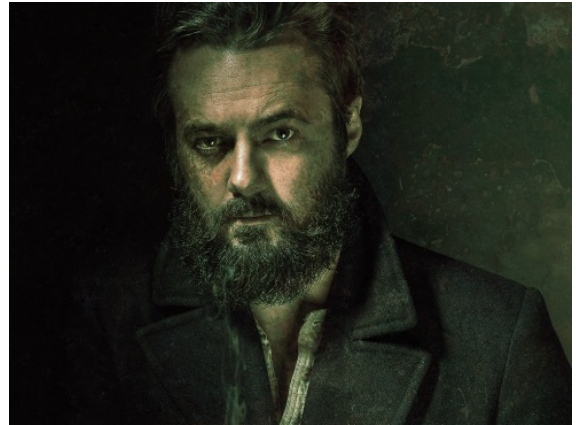
**WITH SUPPORT FROM**



**Australian High Commission**  
**Wellington, New Zealand**

*Developed with support from Creative Victoria and assisted by the Australian Government through the Australia Council. Initiated through the Victoria Commissions, supported by the Victorian Government, through the Community Support Fund.*

**THE DEVIL'S HALF-ACRE**  
**TRICK OF THE LIGHT THEATRE**  
*(New Zealand)*



The award-winning team that delighted audiences with *The Bookbinder* and *The Road that Wasn't There* return with a darker, more adult tale of the uncanny. *The Devil's Half-Acre* is set in the slums of gold rush-era Dunedin, when the powerhouse of New Zealand lay south of the Waitaki River rather than north of the Bombay Hills. Combining puppetry, live music and a score by acclaimed composer Tane Upjohn-Beatson, it conjures a landscape of brothels, gaming houses and opium dens; a melting pot of immigrants from all over the world — prostitutes, prospectors, beggars and conmen, the newly rich and newly broke, perhaps even the devil himself...

**WHEN**

WED 9 — SUN 13 MAR, 7PM

**WHERE**

HANNAH PLAYHOUSE

**TICKETS**

EARLY BIRD A\$45, A\$49, B\$39

**DURATION**

1HR 30MINS (NO INTERVAL)

**PARTNERED BY**



**WITH SUPPORT FROM**





**NOT IN OUR  
NEIGHBOURHOOD**  
**TIKAPA PRODUCTIONS**  
*(New Zealand)*

Prepare yourself for a powerful night of theatre at Jamie McCaskill's thought-provoking and refreshingly honest play about the many guises of domestic violence, a sell-out at the 2015 Ahi Kaa Festival. Creating a documentary to raise awareness, Maisey Mata encounters Sasha, Cat and Teresa at the Women's Refuge in Hauraki. Actor Kali Kopae gives an incredible performance as both Maisey and the three very different women, who are each seeking a safe haven and trying to rebuild their lives.

**WHEN**

FRI 26 — SUN 28 FEB, 6PM

SAT 27 FEB, 2PM

**WHERE**

HANNAH PLAYHOUSE

**TICKETS**

EARLY BIRD GA\$39, GA\$49

**WITH SUPPORT FROM**





**THE WOMAN WHO FORGOT**  
**WRITTEN BY RACHEL DAVIES**  
**DIRECTED BY JESS FEAST**  
**STORYBOX** *(New Zealand)*

Who needs a stage when you have an entire city? Fans of the 2014 Festival's "subtle mobs" won't want to miss this even more multi-dimensional piece of adventure theatre, which combines a smartphone app, texts, Skype calls and live performers. Step into the shoes of Elizabeth Snow, who wakes suddenly with no idea who she is, and join her on an immersive journey through Wellington as she tries to piece together the fragments of her life.

*Smartphone and headphones essential. Contains adult themes and strong language.*

**WHEN**

WED 2 — WED 9 MAR (EXCEPT MON)

EIGHT PEOPLE EVERY 15MINS, NOON — 2PM AND 6PM — 9PM

**WHERE**

CENTRAL WELLINGTON

**TICKETS**

EARLY BIRD GA\$39, GA\$49

**DURATION**

1HR 15MINS (NO INTERVAL)

**PARTNERED BY**



**WITH SUPPORT FROM**



**WITH VENUE SUPPORT FROM**







**THE GOD THAT COMES**  
**2B THEATRE COMPANY**  
*(Canada)*

Charge your glass for this booze-soaked rock ‘n’ roll cabaret in which Hawksley Workman celebrates the god of wine and ecstasy. In a city governed by greed and ruled by an oppressive leader, find out what happens when the people flee the city and stage a debauched revolution. Part play, part concert, all Bacchanalian, this is a sexy one-man show overflowing with “deft wit and razor sharp humour” (*Calgary Sun*, Canada). Unleash your inner animal and don’t forget the Bloody Mary for the morning after.

**WHEN**

TUE 15 — SAT 19 MAR, 8PM  
SUN 20 MARCH, 6PM

**WHERE**

HANNAHPLAYHOUSE

**TICKETS**

EARLY BIRD A\$49, A\$59, B\$39

**DURATION**

1HR 15MINS (NO INTERVAL)

**PARTNERED BY**



**PAGE  
TURNERS**  
**DIRECTED BY**  
**JANE YONGE**  
**PRODUCED BY**  
**ISOBEL MEBUS**  
*(New Zealand)*

**FREE**

What do Te Rauparaha, Robin Hyde, Nancy Wake, James K Baxter and Carmen Rupe have in common? They were all Wellingtonians – and all trouble-makers. This show tells their stories from the set of a three-metre-high pop-up book. Entertaining and enlightening, *Page Turners* is based on an original idea by Grant Stevenson, and is back by popular demand after a successful run at the National Library as part of the *Capital 150* celebrations.

**WHEN**

SUN 6 MAR, 11AM, 1PM, 3PM

**WHERE**

UPSTAIRS AT ST JAMES THEATRE

**DURATION**

1HR



**THE ACB WITH  
HONORA LEE**  
**BY KATE DE GOLDI**  
**ADAPTED AND DIRECTED**  
**BY JANE WADDELL**  
**CIRCA THEATRE**  
*(New Zealand)*

Kate De Goldi is one of New Zealand's most loved authors, popular with both adults and children. Quirky humour, playfulness and intergenerational love are at the heart of this adaptation of her 2012 novel, *The ACB with Honora Lee*. A charming exploration of kindness, patience and acceptance, it follows the relationship between young Perry and her eccentric Gran, Honora Lee, who's losing her memory. As more and more words slip from Gran's grasp, Perry furiously gathers them up, turning them into an illustrated and disorderly alphabet book, which becomes a gift of love to her grandmother.

**WHEN**

SAT 27 FEB — SAT 26 MAR  
TUE — SAT 6.30PM SUN 4PM

**WHERE**

CIRCA ONE

**TICKETS**

ADULTS \$39  
CHILDREN \$19  
FAMILY (2 ADULTS 2 CHILDREN) \$97

**DURATION**

1HR 20MINS (NO INTERVAL)

## ARTIST TALK

WED 16 MAR

*See Writers Week for Spotlight on Playwrights as part of Circa Theatre's 40th anniversary.*

## PARTNERED BY

Vivien Hirschfeld



## WITH SUPPORT FROM





**COMPLEXITY OF  
BELONGING**  
**A PROJECT BY FALK  
RICHTER AND ANOUK  
VAN DIJK**  
**CHUNKY MOVE**  
*(Australia)*

“Word and movement are intricately intertwined ...  
Deeply moving and frequently hilarious... a must see.”  
*Australian Stage*

Lauren feels weird about feeling lonely. Jimi feels weird he isn't a woman. Tara feels weird she *is* a woman. Josh never really feels Australian enough. From two of dance and theatre's most unflinching makers comes a daring and darkly humorous exploration of identity in the age of social media.

*Complexity of Belonging* peers into the lives of nine interconnected people as they grapple with the question: how and where do I belong? Nationality, gender, sexuality and history collide and fragment on stage in this audacious theatrical expose of the daily trials of surviving in a hyper-connected, hyper-sensitive, globalised society.

It's “boundary-pushing choreographic theatre that displays the highest level of artistry” (*The Age*). It's an outsider take on Australia. It's also an insider take on the 21st century.

*Co-produced by Chunky Move, Melbourne Theatre Company, Melbourne Festival, Brisbane Festival and Théâtre National de Chaillot.*

**WHEN**

FRI 11 — SUN 13 MAR, 7.30PM

SUN 13 MAR, 1.30PM

**WHERE**

ST JAMES THEATRE

**TICKETS**

EARLY BIRD A\$79, A\$89, B\$69, C\$49, D\$39

**DURATION**

1HR 40MINS (NO INTERVAL)

*The performance on Sunday 13 March at 1.30pm will be New Zealand Sign Language Interpreted.*

**ARTIST TALK**

THU 10 MAR

**PARTNERED BY**

Assignment:

**WITH SUPPORT FROM**



Australian High Commission  
Wellington, New Zealand



**SPEED OF LIGHT**  
**THREE BRILLIANT**  
**DANCEWORKS**  
**ROYAL NEW ZEALAND BALLET**  
*(New Zealand)*

“The work that changed ballet forever”

*The Guardian on In the Middle, Somewhat Elevated*

These three contemporary dance classics showcase the energy, precision and charisma of the Royal New Zealand Ballet under the artistic leadership of Francesco Ventriglia.

Andonis Foniadakis’s *Selon désir*, inspired by the monumental opening choruses of the *St Matthew* and *St John* Passions, was created for Geneva Ballet in 2004 and is a gorgeous synthesis of colour, light, music and movement. Commissioned by Rudolf Nureyev for the Paris Opera Ballet in 1987, William Forsythe’s revolutionary *In the Middle, Somewhat Elevated* is bold and brilliant, with “six women and three men prowling around the stage, like fierce creatures exploring an alien space” (*The Guardian*). Alexander Ekman’s *Cacti*, premiered in The Hague in 2010, combines daredevil virtuosity and split-second timing with a playful wit. Here the RNZB is joined onstage by the New Zealand String Quartet in a celebration of physicality and the sheer joy of dance.



## WHEN

FRI 26 — SAT 27 FEB, 7.30PM

SAT 27 FEB, 1.30PM

SUN 28 FEB, 4PM

## WHERE

ST JAMES THEATRE

## TICKETS

P\$87 — \$110, A\$77, B\$63, C\$49, D\$35

CHILD AND OTHER CONCESSION RATES AVAILABLE

## DURATION

1HR 45MINS (WITH TWO 15MIN INTERVALS)

## FREE EVENTS

SAT 27 FEB

POST-MATINEE Q&A WITH ARTISTIC STAFF AND DANCERS; 6.20PM

— 6.50PM; *WARM UP, CURTAIN UP* — WATCH THE COMPANY

PREPARE FOR ITS EVENING PERFORMANCE

SUN 28 FEB 3PM — 3.30PM

PRE-PERFORMANCE CHOREOGRAPHIC AND MUSIC TALKS

## WITH SUPPORT FROM



**THE KISS INSIDE**  
**DOUGLAS WRIGHT DANCE**  
*(New Zealand)*



“The work of a master craftsman, a purveyor of images who had the audience captured from the moment the curtain rose” *Theatreview*

When Douglas Wright makes a new work, dancer Sarah-Jayne Howard drops everything to be in it – “because I just can’t not be there with him”. You don’t have to be a dancer to feel like that.

*The Kiss Inside* is the choreographer’s meditation on the search for ecstasy, that buzz we are all looking for, “whether it’s through a chocolate eclair, or it’s the rush of heroin, or an orgasm”. Wright has dug deeply into the human psyche and returned with a visual poem full of provocative images and exquisite, sometimes frenzied, movement — all to a soundtrack combining classical Sufi music, Patti Smith and JS Bach. Discover for yourself what the buzz is about.

*Produced by Jumpboard Productions.*

**WHEN**

FRI 4 — SAT 5 MAR, 8PM

**WHERE**

OPERA HOUSE

**TICKETS**

EARLY BIRD A\$59, A\$69, B\$49, C\$39

**DURATION**

1HR 15MINS (NO INTERVAL)

**PARTNERED BY**

THE PERFORMING ARTS FOUNDATION OF WELLINGTON

**WITH SUPPORT FROM**



## CONCERTO ITALIANO

(Italy)

“There are few performers better-versed in the music of Claudio Monteverdi than Rinaldo Alessandrini and the ensemble he founded 30 years ago” *The Guardian*

Four centuries old and more popular than ever, Monteverdi’s *Vespro della Beata Vergine* (1610) – better known as Monteverdi’s *Vespers* – is either one of the last great masterpieces of Renaissance music or one of the first stirrings of the Baroque: a landmark work. You won’t hear it played in its entirety very often, because its intricate harmonies and virtuoso solo parts constitute a monumental test of any ensemble that attempts it. But with a well-established reputation as one of the best European early music groups, multiple *Gramophone* Award winners Concerto Italiano are renowned worldwide for their performances of this work.

### WHEN

SAT 27 FEB, 7.30PM

### WHERE

MICHAEL FOWLER CENTRE

### TICKETS

EARLY BIRD P\$99, P\$109, A\$89, B\$79, C\$69, D\$39

**DURATION**

1HR 45MINS (INC 20MIN INTERVAL)

**PARTNERED BY**

**THE WORLD PREMIERE OF  
BRASS POPPIES  
MUSIC BY ROSS HARRIS  
LIBRETTO BY VINCENT O'SULLIVAN  
(New Zealand)**



**“Extremely visionary ... thunderous and awe-inspiring”  
Peter Mechen on *Requiem for the Fallen*,  
Radio New Zealand Concert’s *Upbeat***

This ground-breaking new chamber opera from Ross Harris and Vincent O’Sullivan (*Requiem for the Fallen*) powerfully portrays Gallipoli as both a military story and one of domestic New Zealand. Wives and families at home in Wellington are as much to the fore as men in uniform at the front in an innovative depiction of the 1915 battle of Chunuk Bair. Directed by Jonathan Alver, with award-winning tenor James Egglestone as Wellington Regiment Lieutenant-Colonel William Malone, and the score performed by Stroma New Music Ensemble, *Brass Poppies* offers fresh perspectives on World War I, along with music and emotional resonances that will stay with you long after the curtain falls.

*Co-produced by New Zealand Festival, Auckland Arts Festival and New Zealand Opera, with support from the Lottery Grants Board.*

**WHEN**

THU 3 — SUN 6 MAR, 7.30PM

## WHERE

SHED 6

## TICKETS

EARLY BIRD A\$59, A\$69

## DURATION

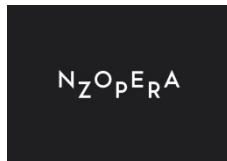
1HR 10MINS (NO INTERVAL)  
WITH SURTITLES

## ARTIST TALK

FRI 4 MAR

## WITH SUPPORT FROM

Peter and Carolyn Diessl





A group of five Kiwi bank staff members are posing in a modern office environment. They are holding a large green sign that reads "We love making Kiwis dance." The staff members are smiling and looking at the camera. The office has a green and white color scheme with modern lighting and furniture.

**Kiwi  
bank.**

**We love  
making  
Kiwis  
dance.**

We're embracing Kiwis' joy of dancing, so we're delighted to bring you the opening event of the New Zealand Festival 2016 – *Le Grande Continental®*.

This world-renowned mass dance spectacular has appeared across the world. Now it is Wellington's turn.

Don't miss this incredible kick up the arts. Come and feel the joy of independence.

**NEW ZEALAND FESTIVAL**



**RELICT FURIES**  
**MUSIC BY GARETH FARR**  
**LIBRETTO BY PAUL HORAN**  
*(New Zealand)*

**“A heart-stabbing evocation of the First World War”**  
*The Scotsman*

Premiered to great acclaim at the Edinburgh International Festival, *Relict Furies* gives a voice to World War I’s New Zealand “relicts” — the widows and sweethearts who waved their men goodbye and never saw them again. Mezzo soprano Wendy Doyle sings Paul Horan’s powerfully affecting libretto (“Tomorrow I wear my wedding shoes to your funeral”), while Gareth Farr’s score places two mirrored string sections from the New Zealand Symphony Orchestra on opposite sides of Wellington Cathedral of St Paul to open up the vast internal landscapes of bereavement and fury. The concert also includes works for strings by Edward Elgar, Ralph Vaughan Williams and Peter Sculthorpe.

*Co-commissioned by New Zealand Festival and Edinburgh International Festival.*

**WHEN**

TUE 15 MAR, 7PM

**WHERE**

WELLINGTON CATHEDRAL OF ST PAUL

**TICKETS**

EARLY BIRD GA\$49, GA\$59

## DURATION

1HR

## WITH SUPPORT FROM



**THE WORLD PREMIERE OF  
NO MAN'S LAND  
A LOVE LETTER TO PEACE  
JOHN PSATHAS/JASMINE MILLET/  
MATHEW KNIGHT  
(New Zealand)**



*“No Man’s Land appears to me to seek to honour the many New Zealanders who served in the armed forces during the war, of whom many lost their lives, and to carry a strong message of reconciliation through the common language of music”* Helen Clark

**FEATURING**

NAWRAS ALHAJIBRAHIM  
JOE CALLWOOD  
BIJAN CHEMIRANI  
HAYDEN CHISHOLM  
PAOLO CIMMINO  
FARA DIOUF  
DAVID DOWNES  
TECWYN EVANS  
ALEXEJ GERASSIMEZ  
RENKEI HASHIMOTO  
DAVID HENDERSON  
JACK HOOKER  
SHAHBAZ HUSSAIN  
JOSHUA HYDE  
VAGELIS KARIPIS  
ZOFIA KOLBE-WOJDYR

JOLANTA KOSSAKOWSKA  
SOFIA LABROPOULOU  
GARETH LUBBE  
PIERRE MÉA  
MEETA PANDIT  
STRATIS PSARADELIS  
JOHN PSATHAS  
SIMONE REBELLO  
CALEB ROBINSON  
DAVID ROSS  
MUHAMMET SADRETTIN  
ÖZCIMI  
BENJAMIN SCHAFER  
MÁRTA SEBESTYÉN  
YANAL STALTI  
SVET STOYANOV

MATEUSZ SZEMRAJ  
SERJ TANKIAN  
ARIANA TIKAO  
DERYA TURKAN  
RUSSEL WALDER  
HANG MASSIVE  
NETHERLANDS BLAZERS  
ENSEMBLE

OUM  
POLISH RADIO CHOIR  
REFUGEES OF RAP  
STRASBOURG PHILHARMONIC  
ORCHESTRA  
THE NUDGE

New Zealand has never witnessed a multi-layered world music collaboration like this before. John Psathas is no stranger to large-scale works but this is his most ambitious project yet. Featuring 150 musicians from more than 20 countries, including Serj Tankian (Lebanon/Armenia/USA), Meeta Pandit (India), Marta Sebestyen (Hungary) and the Strasbourg Philharmonic Orchestra (France), *No Man's Land* brings together the descendants of opposing forces in World War I and reunites them in friendship and musical solidarity on the sites where their grandfathers and great-grandfathers fought a century ago. Director Jasmine Millet and cinematographer Mathew Knight's film of this epic global orchestra – playing a Psathas composition that leaps musical genres as it does borders, from folk to jazz to rock to classical – will be seen and heard in tandem with a select group of musicians performing live on stage.

*Co-produced by the New Zealand Festival and Victoria University of Wellington, with support from the Lottery Grants Board, Adrian Durham, the British High Commission, Embassy of the Republic of Poland, Embassy of France, New Zealand-France Friendship Fund and Radio New Zealand Concert.*

## **WHEN**

WED 2 MAR, 7.30PM

## WHERE

MICHAEL FOWLER CENTRE

## TICKETS

EARLY BIRD A\$65, A\$69, B\$59

## DURATION

1HR 20MINS (NO INTERVAL)

## CO-PRODUCED BY



## WITH SUPPORT FROM





## REIMAGINING THE CLASSICS URI CAINE WITH THE NEW ZEALAND STRING QUARTET

*(United States/New Zealand)*

Brilliant jazz pianist and composer Uri Caine will be using the classics as a springboard for his exciting improvisations.

Caine's previous collaborations extend from the Beaux Arts Trio to John Zorn, from the Woody Herman Band to the Moscow Chamber Orchestra, and works he's reimagined include Bach's *Goldberg Variations* and Beethoven's *Diabelli Variations*. For this concert, he's joining forces with the New Zealand String Quartet, already known for their creative engagement with jazz artists, including pianist Mike Nock and American guitarist Jim Hall.

As well as the magnificent *Goldberg Variations*, described by Bach as "Diverse Variations Composed for Music Lovers to Refresh their Spirits", they will be reflecting on the Allegretto con variazioni of Beethoven's *Harp Quartet* Opus 74 and playing some of Caine's originals for piano and string quartet.

### WHEN

SUN 20 MAR, 5PM

### WHERE

MICHAEL FOWLER CENTRE

### TICKETS

A\$85, B\$65, C\$35

## **DURATION**

2HRS (INC 20MIN INTERVAL)

## **PRESENTED BY**



## **WITH SUPPORT FROM**





**DAME KIRI TE KANAWA**  
**WITH VOICES NEW ZEALAND**  
**CHAMBER CHOIR**  
**AND PIANIST TERENCE DENNIS**  
*(New Zealand)*



*“A deep music intelligence in a recital that approaches perfection” The Sydney Morning Herald*

Dame Kiri has one of the world’s great and beloved voices. Her career has spanned more than 40 years and she’s one of the most honoured sopranos of all time. This one-off recital, featuring Schubert, Strauss and Brahms among other composers, allows you to hear Dame Kiri solo and alongside the “supreme polish and breathtaking accuracy” (*The Dominion Post*) of Voices New Zealand Chamber Choir, whose members are drawn from the country’s best singers and are conducted by Music Director Karen Grylls. The combination – together with Dame Kiri’s longtime piano accompanist, the internationally renowned Terence Dennis – promises to be very special indeed.

**WHEN**

SUN 13 MAR, 6PM

**WHERE**

MICHAEL FOWLER CENTRE

**TICKETS**

EARLY BIRD P\$89, P\$95, A\$79, B\$69, C\$59

PARTNERED BY

**HIGGINS®**

WITH SUPPORT FROM





## **MIYATA-YOSHIMURA-SUZUKI TRIO**

**WITH MUSIC BY SAMUEL HOLLOWAY,  
DYLAN LARDELLI AND CHRIS GENDALL**  
*(Japan/New Zealand)*

This cutting-edge fusion of East and West brings together three of New Zealand's most explorative composers with Japan's virtuosic Mayumi Miyata (shō), Nanae Yoshimura (koto) and Tosiya Suzuki (recorder). The Kiwis have written new works, and they will be performed along with traditional Japanese repertoire and works by Toshio Hosokawa, Osamu Kawakami and Takashi Tokunaga that further showcase the trio's exquisite playing.

### **WHEN**

SUN 28 FEB, 3PM

### **WHERE**

ST ANDREW'S ON THE TERRACE

### **TICKETS**

EARLY BIRD GA\$39, GA\$45

### **DURATION**

1HR 20MINS (NO INTERVAL)

### **ON THE ROAD**

LOWER HUTT, 29 FEB

### **IN ASSOCIATION WITH**



Chamber Music  
New Zealand

### **WITH SUPPORT FROM**



ARTS COUNCIL OF NEW ZEALAND TOI AOTEAROA



JacksonStone  
/ & PARTNERS

# Supporting talent on any stage.

JacksonStone & Partners  
Executive Search & Recruitment  
Proud sponsor of the New Zealand Festival

**SILA: THE BREATH  
OF THE WORLD**  
**BY JOHN LUTHER ADAMS**  
*(United States)*

**FREE**



“When you take music outdoors it turns the whole situation inside out. Outdoors we’re invited to expand our awareness and to listen as far as we can”  
*The Guardian*

You won’t have ever experienced a concert like this before, or one of the city’s public spaces used so creatively. For this unique composition by “one of the most original musical thinkers of the new century” (*The New Yorker*), more than 60 Orchestra Wellington musicians, set loose from a conductor’s baton and scattered around Civic Square, are allowed to play at their own speed, with just one proviso: each sustained tone or rising phrase lasts the length of a full exhalation. There is no best seat – wander around to take in all the different perspectives – and don’t complain about the nearby traffic, people talking or the noise of cellphones, as they’re all part of the “ecological listening” *Sila* celebrates.

**WHEN**

SAT 5 MAR, 5PM

SUN 6 MAR, 3PM

**WHERE**

CIVIC SQUARE

## **DURATION**

1HR 10MINS

## **WITH SUPPORT FROM**



## FLYING NUN DUNEDIN DOUBLE

“Any great music scene has one record that captures its early essence and announces it to the world. Flying Nun Records' *Dunedin Double* EP is that kind of record. It put Flying Nun on the map, literally”  
Russell Brown, *Audioculture*

Nearly 35 years after the 1982 record that helped launch New Zealand's most important independent record label and take the “Dunedin Sound” to the rest of the country and then the world, the New Zealand Festival has brought two of the *Dunedin Double* EP's bands together for a one-off pair of concerts already creating waves among music lovers. And you know what, we still haven't given up hope of getting Sneaky Feelings to reform for our next Festival.

## THE CHILLS

(New Zealand)



Formed in Dunedin in 1980, The Chills were one of the first acts to be signed to Flying Nun. They have had a revolving cast of band members, with frontman Martin Phillipps the only constant. His knack for writing fantastic pop songs has given them chart hits in New Zealand and a cult following around the world. The Chills'

critically acclaimed songs include *Pink Frost*, *I Love My Leather Jacket* and *Heavenly Pop Hit*, to name just a few. In October 2015, they released their first full-length album in nearly two decades, *Silver Bullets*.



## THE VERLAINES

*(New Zealand)*

The Verlaines formed in Dunedin in 1981 and immediately made their mark with sophisticated songwriting and unique, uncompromisingly difficult torrents of harmony influenced by classical music. Reuniting their 1986 line-up of Jane Dodd (bass), Robbie Yeats (drums) and co-founder Graeme Downes (vocals/guitar), the band will perform a special set of songs written by Downes between 1979 and 1986 for the albums *Juvenilia*, *Hallelujah* and *Bird Dog*. Of all their incarnations, it is this one with this repertoire that will strike at the heart of fans.

### WHEN

THE CHILLS — TUE 8 MAR, 8PM

THE VERLAINES — WED 9 MAR, 8PM

### WHERE

SHED 6

### TICKETS

EARLY BIRD A\$59, A\$69



**WITH SUPPORT FROM**



**DIRTSONG**  
**BLACK ARM BAND**  
*(Australia)*



**FEATURING**

ARCHIE ROACH  
PAUL KELLY  
MARK ATKINS  
DELINE BRISCOE  
EMMA DONOVAN

HOROMONA HORO  
FRED LEONE  
YIRRMAL MARIKA  
URSULA YOVICH

*“The music is utterly captivating, a mellifluous blend of voices and indigenous and modern instruments”*  
*Business Times*

There’s music that breaks down barriers, and then there’s music that obliterates them. Inspired by the words of author Alexis Wright, Australia’s Black Arm Band perform songs from 11 different Aboriginal languages in this soulful show, which will bring to you the heart and humanity of the country and its most celebrated musicians, including Archie Roach and special guest artist Paul Kelly. Rich with complex harmonies and powerful melody, it will “send a shudder down your spine and bring a tear to your eyes” (*The Age*).

Meanwhile, the cinematic screen behind the musicians opens a window on to the landscapes the music comes from, taking you on an immersive journey across a country you'll never see quite the same way again.

**WHEN**

SUN 28 FEB, 7PM

**WHERE**

MICHAEL FOWLER CENTRE

**TICKETS**

EARLY BIRD A\$59, A\$69, B\$49, C\$39

**DURATION**

1HR 20MINS (NO INTERVAL)

**ON THE ROAD**

ARCHIE ROACH, PORIRUA, 27 FEB

**PARTNERED BY**

sputnik.

**WITH SUPPORT FROM**



Australian High Commission  
Wellington, New Zealand



## CALEXICO

(United States)

A sell-out at the 2010 Festival, these New Zealand favourites from Tucson, Arizona, return on the back of the success of their latest album, *Edge of the Sun*. Named for a border town in California, Calexico cross many musical frontiers: mariachi, cumbia, jazz, post-rock ... and plenty more besides. Prepare to be transported to the “desert noir” landscape of tumbleweed and tequila they’ve made their own.

### WHEN

SAT 19 MAR, 8PM

### WHERE

OPERA HOUSE

### TICKETS

EARLY BIRD A\$59, A\$69

### PARTNERED BY



WILLIS BOND & Co

### WITH SUPPORT FROM



EMBASSY OF  
THE UNITED STATES  
OF AMERICA



## THE PHOENIX FOUNDATION

(New Zealand)

“Full of Technicolor pop sparkle” *The Guardian*

Twenty years in the game and The Phoenix Foundation remain one of New Zealand’s most beloved and innovative bands. They’re pretty popular elsewhere, too, with the *NME* praising latest album *Give Up Your Dreams* as “a fabulous meld of power-pop, electronica and US West Coast harmony that swings through techno-country ... and even dabbles in soulful house”. Catch them at their best – in front of a hometown audience.

### WHERE

SHED 6

### TICKETS

EARLY BIRD A\$39, A\$45

### PARTNERED BY

**RICOH**  
imagine. change.

### WITH SUPPORT FROM

 creative *nz*  
ARTS COUNCIL OF NEW ZEALAND TOI AOTEAROA

**L'ORCHESTRE D'HOMMES**  
**ORCHESTRES**  
**PERFORMS TOM WAITS**  
*(Quebec-Canada)*



Enter the “sheer energetic madness” (*This is Cabaret*) of this four-man band of one-man bands. Their tribute to the world of Tom Waits does the unimaginable and turns the gravel-voiced singer’s music into something even more eccentrically entertaining. Accompanied by the deadpan New Cackle Sisters, L’orchestre revel in “the vaudeville and Weimar cabaret elements of Waits’s work while possessing the slapstick vim of a Saturday morning kids’ TV show” (*The Guardian*).

**WHEN**

THU 17 – SAT 19 MAR, 8PM

**WHERE**

SHED 6

**TICKETS**

EARLY BIRD A\$59, A\$69

**DURATION**

1HR 40MINS (INC INTERVAL)

**PARTNERED BY**

**Astelia**  
apartment hotel



## **BOTH SIDES NOW**

**JULIA DEANS SINGS JONI MITCHELL**  
*(New Zealand)*

Fresh from her success in Silo Theatre's sultry *Brel*, Julia Deans turns to the Joni Mitchell songbook in this stunning show directed by Shane Boshier. From fronting Fur Patrol to collaborating with supergroup The Adults, Deans has a voice that switches effortlessly between honey-sweet falsetto and menacing growl.

*Originally commissioned by Auckland Live and premiered at the Auckland International Cabaret Season in 2014.*

### **WHEN**

FRI 11 – SAT 12 MAR, 8PM  
SUN 13 MAR, 6PM

### **WHERE**

SHED 6

### **TICKETS**

EARLY BIRD A\$59, A\$69

### **DURATION**

1HR 30MINS (NO INTERVAL)

### **ARTIST TALK**

SUN 13 MAR

### **PARTNERED BY**

**SUNDAY STAR★TIMES**

WITH SUPPORT FROM



## SORCERESS

(New Zealand)



### “My car runs on Sorceress” DJ Fitchie of Fat Freddy’s Drop

Sorceress (formerly Funkommunity) were founded by vocalist Rachel Fraser and producer Isaac Aesili in 2011 and have since evolved into one of the most widely respected soul and electronica acts in New Zealand. After establishing an international following with debut album *Chequered Thoughts*, they explored new directions in synth-based jazz textures and subterranean basslines on sophomore release *Dose*. Rest assured, they’ll put a spell on you.

#### WHEN

TUE 15 MAR, 8PM

#### WHERE

SHED 6

#### TICKETS

EARLY BIRD A\$39, A\$45

#### WITH SUPPORT FROM







## **MODERN MĀORI QUARTET**

*(New Zealand)*

Suit up for a night filled with waiata, wit and downhome warmth, when the boys bring you their fresh take on the classic Māori showband. This multi-talented foursome have a magnetic presence on stage that'll have you melting like golden syrup on hot fried bread. Their latest cabaret show puts the quartet's stamp on Kiwi classics and some of today's biggest hits.

### **WHEN**

WED 16 MAR, 8PM

### **WHERE**

SHED 6

### **TICKETS**

EARLY BIRD A\$49, A\$59, CHILD \$19

### **DURATION**

1HR 15MINS (NO INTERVAL)

### **ON THE ROAD**

PARAPARAUMU, 18 MAR

MASTERTON, 19 MAR

LOWER HUTT, 20 MAR

### **PARTNERED BY**



### **WITH SUPPORT FROM**





## THE CONTACT FESTIVAL PLAYGROUND

To celebrate the Festival's 30th birthday, we're building Wellington a fantastical family fairground perfect for anyone young at heart.

## ARQUITECTURA DE FERIA ANTIGUA I BARBUDA *(Spain)*



Come on, Dad, put your shoulder to the wheel! Mum, keep pedalling! Arquitectura de Feria is a Catalan fairground No. 8 wire-style, with seven fantastical hand-cranked rides put together from recycled material and scrap iron. A merry-go-round made of motorbikes. A ferris wheel where kids are propelled around on toilet bowls. And swinging chairs where the grown-ups can rest easy after the rides, which all run on old-fashioned parent-power. The company Antigua I Barbuda's actors will be on site to fuel the surreal atmosphere of celebration.

## **WHEN**

SAT 27 FEB — SAT 19 MAR (EXCEPT MONDAYS), 2PM — 10PM

## **WHERE**

FRANK KITTS PARK

## **PARTNERED BY**



## **WITH SUPPORT FROM**





**FLY ME UP TO WHERE  
YOU ARE NEW ZEALAND**  
**TIFFANY SINGH**  
*(New Zealand)*

Each of the 14,000 flags in Tiffany Singh's award-winning installation expresses the hopes and dreams of a child somewhere in New Zealand. Singh has been working with schoolchildren from Wellington, Auckland and Christchurch since 2012, helping them turn their ideas into vibrant images.

Around the Playground you will see flags from all three cities, flying together for the first time. After the Festival, they will continue their journey to the Himalayas, where, as a collective offering of peace from New Zealand, they will join the millions of Buddhist "prayer flags" that inspired the project.

**WHEN**

SAT 27 FEB — SAT 19 MAR

**WHERE**

FRANK KITTS PARK

**ARTIST TALK**

SUN 28 FEB

**WITH SUPPORT FROM**

### **COME AND GET YOUR KAI ...**

To complete your Contact Festival Playground experience, and to make sure the kids don't go hungry, head for the many yummy offerings in the food truck park provided by our friends at Wellington on a Plate.

**CHALK ABOUT  
CURIOUS SEED**  
*(Scotland)*



“Some of the most brilliantly imaginative, humorous, touching theatre I have seen this year” *The Times*

Start in the playground, go anywhere ... Revel in the creativity of this highly inventive show for kids and their families where performers Christine and Niels take the old playground game of making chalk outlines (kids are invited to help) and turn it into a playful, funny and sometimes moving look at how we fill in the outlines of each other's identities.

*Originally created by Christine Devaney & Leandro Kees (Performing Group).*

**WHEN**

TUE 1 — WED 2 MAR, 6PM

FRI 4 MAR, 6PM

SAT 5 — SUN 6 MAR, 1PM

**WHERE**

HANNAH PLAYHOUSE

**TICKETS**

EARLY BIRD GA\$45, GA\$49. CHILD \$19

**DURATION**

50MINS

## ON THE ROAD

GREYTOWN, 8 MAR

UPPER HUTT, 9 MAR

PORIRUA, 10 MAR

## PARTNERED BY



## WITH SUPPORT FROM





## WAVES

**ALICE MARY COOPER**

*(Australia/United Kingdom)*

We know it as the "butterfly stroke" but to Elizabeth Moncello growing up on Australia's Gabo Island in the 1930s it was the "dolphin". So reveals Alice Mary Cooper, who with highly expressive storytelling brings us the unofficial history of how Liz invented the butterfly/ dolphin with the help of fish, penguins and other aquatic friends. *Waves* is about a lonely girl finding the courage to do something astonishing. It is funny, moving, and equally absorbing for children and adults.

*Presented in association with Auckland Arts Festival.*

### WHEN

SAT 5 MAR, 2PM AND 7PM

### WHERE

CIRCA TWO

### TICKETS

EARLY BIRD A\$39, A\$49, CHILD \$19

### DURATION

50MINS

### ON THE ROAD

OTAKI, 2 MAR

CARTERTON, 3 MAR



**PARTNERED BY**



**WITH SUPPORT FROM**



## WRITERS WEEK

TUESDAY 8 MARCH – SUNDAY 13 MARCH

The New Zealand Festival once again brings some of the smartest, most eloquent and entertaining people from home and abroad to Wellington for the week. Join the conversation as they talk about their work, their lives and the world around them. Novelists of every hue, be it literary, graphic, sci-fi or fantasy; children's writers and illustrators; poets; memoirists; historians; scientists; journalists ... there is someone for everyone here. The full Writers Week brochure, with further announcements, is launched on Thursday 28 January. Pick up your copy from Unity Books, libraries and other bookshops and outlets nationwide, or go to [festival.co.nz](http://festival.co.nz).



**MIRANDA JULY:**  
**LOST CHILD!**  
*(United States)*

“July has a rare ability to pin down people's faults, frailties, and eccentric compulsions, rather than squirm from them – and then to make us love them anyway”  
*The Independent*

Part artist lecture, part interactive performance, this one-off New Zealand show spans Miranda July's journey from fledgling artist in Portland, Oregon, to award-winning film-maker and bestselling author.

July's film *Me and You and Everyone We Know* (2005) won the Camera d'Or at the Cannes Film Festival and a Special Jury Prize at Sundance. Her short-story collection, *No One Belongs Here More Than You* (2008), won the prestigious Frank O'Connor International Short Story Award and is published in 23 countries. Her writing has appeared in *The New Yorker*, *The Paris Review* and *Harper's*, and her debut novel, *The First Bad Man*, was an immediate *New York Times* bestseller.

July's artworks include the website *Learning to Love You More* (with Harrell Fletcher) and the messaging app *Somebody*, which gets strangers to deliver your messages in person.

Like so much of July's work, *Lost Child!* will test your perceptions of art, literature and most likely yourself.

#### **WHEN**

WED 9 MAR, 6PM

#### **WHERE**

OPERA HOUSE

#### **TICKETS**

EARLY BIRD A\$59, A\$69

#### **DURATION**

1HR 20MINS (INC 20MIN Q&A)

*Presented in partnership with The Wheeler Centre and Sydney Opera House.*

PARTNERED BY

WITH SUPPORT FROM

NEW ZEALAND  
**LISTENER**



EMBASSY OF  
THE UNITED STATES  
OF AMERICA

## DO NO HARM: LIFE, DEATH AND BRAIN SURGERY

HENRY MARSH

*(United Kingdom)*



Neurosurgery “has met its Boswell”, Ian McEwan said of Henry Marsh and his bestselling *Do No Harm: Stories of Life, Death, and Brain Surgery*. The memoir featured on many writers’ “books of the year” list and its admirers range from Bill Bryson to Karl Ove Knausgaard.

Marsh is a pioneer of operating on brain tumours under local anaesthetic. In *Do No Harm*, he opens up about the fierce joy of operating, his hatred of hospitals, and the profoundly moving triumphs and sometimes tragic consequences of operating on the human brain. He has a roguish reputation for being outspoken. His preferred attire for cycling is a cowboy hat and boots. His leisure pursuits include carpentry and beekeeping and his surgery is the subject of two major BBC documentaries, including *The English Surgeon* (2009), about his decades of work in the former Soviet Union. Join us for a unique glimpse into Marsh’s world.

*Presented in association with the New Zealand Health Quality & Safety Commission's Open Forum: International Speaker series.*

**WHEN**

TUE 8 MAR, 6PM

**WHERE:** MICHAEL FOWLER CENTRE

**TICKETS:** EARLY BIRD A\$39, A\$49

**DURATION:** 1HR 15MINS

**PARTNERED BY**

**NEW ZEALAND  
LISTENER**



**A CIRCLE OF  
LAUREATES**

Join New Zealand Poets Laureate Jenny Bornholdt, Michele Leggott, Bill Manhire, Cilla McQueen, Vincent O'Sullivan, Elizabeth Smither, CK Stead (current Laureate, pictured), Brian Turner and Ian Wedde for an evening of poetry.

**WHEN**

FRI 11 MAR, 7PM

**WHERE**

NATIONAL LIBRARY OF NEW ZEALAND

**TICKETS**

\$20, \$15 CONCESSION

**DURATION**

2HRS

*A National Library of New Zealand and Te Mata Estate Winery event.*

**PHOTOBOOK  
NEW ZEALAND**

**FREE**

See a special collection of New Zealand and Australian photobooks from artists and independent publishers. There are opportunities to browse and buy and have the photographer sign your book. Visit [photoforum-nz.org/photobooknz](http://photoforum-nz.org/photobooknz) to check out the free programme of speakers and panel discussions. Speakers include: Ying Ang, who will discuss the making of her prize-winning book, *Gold Coast* (pictured); Ron Brownson, Senior Curator at Auckland Art Gallery, with an illustrated introduction to local photobooks from 1875-2016; and leading photobook expert Harvey Benge, on getting photobooks out to the world.

**WHEN**

FRI 11 – SUN 13 MAR

**WHERE**

COLLEGE OF CREATIVE ARTS, MASSEY UNIVERSITY

## HIGH TEA: THE ROGER HALL ROAST



One of our best loved writers of popular comedy and social satire, Roger Hall (pictured), is the focus of this year's High Tea. Dave Armstrong hosts a group of mischievous theatre practitioners who fondly roast New Zealand's leading playwright as he celebrates 40 years of a stellar career. Expect to relish your tea and cakes alongside a blistering investigation of Hall's accomplishments and achievements to date.

*Made possible by the generous support of Playmarket and QT Museum Hotel.*

### WHEN

SUN 13 MAR, 3PM

### WHERE

HIPPOPOTAMUS RESTAURANT, LEVEL 3, QT MUSEUM HOTEL

### TICKETS

\$79

### DURATION

1HR 30MINS



## SPOTLIGHT ON PLAYWRIGHTS

It's Circa's 40th birthday and in true Circa tradition New Zealand playwrights are centre stage. Circa will celebrate the 100+ New Zealand playwrights whose work has captivated audiences over the years: from Roger Hall's first play, *Glide Time*, in 1976 to Kate De Goldi's *The ACB with Honora Lee* adapted for the stage by Jane Waddell in 2016 (see page 39). There will be events, stimulating panel discussions, and a reading of *funnygirl* by Anthony McCarten (pictured), in which he dramatises his explosive novel – a plea for tolerance and freedom for individuals and art.

### WHEN

FRI 11 – SUN 13 MAR

### WHERE

CIRCA THEATRE



## **SAVE WITH A MULTI-PASS**

All passes give you a place at the front of the queue with the full Writers Week programme delivered to your letterbox or inbox and a preferential booking period from 29 January until 4 February.

## **THE TAKE FIVE PASS**

A great little deal offering five tickets to Writers Week sessions at the Embassy and BATS theatres.

**\$75**

## **THE FRIDAY OFF WORK PASS**

Take Friday off work; come with an open mind, leave with a buzzing brain. You'll be inspired by top international writers and speakers talking on a range of topics. Pass includes six sessions at the Embassy and BATS theatres, plus a free coffee and a packed lunch.

**\$110**

## **THE BOOKMARK PASS**

The ultimate pass offering 15 tickets to Writers Week sessions at the Embassy and Bats theatres, with 36 events to choose between. Or use your pass for multiple tickets to each event, so you can share the experience with someone else.

**\$200**

## WRITERS WEEK SUPPORTERS



Writers Week is supported by Arts Access Aotearoa, Asia New Zealand Foundation, Australia Council for the Arts, Australian High Commission, Canada Council for the Arts, Circa Theatre, Creative New Zealand, Embassy of France, Embassy of the United States of America, Goethe-Institut, Lion Foundation, National Library of New Zealand, New Zealand Book Council, New Zealand Health Quality & Safety Commission, *New Zealand Listener*, Playmarket, QT Museum Hotel, Unity Books, and Victoria University of Wellington.

## THE INTERNATIONALS

A taste of some of the overseas authors joining the many New Zealanders appearing at Writers Week in 2016.



**MURIEL BARBERY**

*(France)*

Muriel Barbery's novel *The Elegance of the Hedgehog* has sold over five million copies worldwide. Her latest novel, *The Secret Life of Elves*, will be released in Australia and New Zealand in March 2016. It picks up many of the themes from Barbery's previous work: the beauty in everyday things, the transformative influence of art and literature, and the power of love.

**ROBERT DESSAIX**

*(Australia)*



With books such as *Night Letters* and *Twilight of Love: Travels with Turgenev*, Robert Dessaix is one of Australia's finest writers. In his fiction and non-fiction, he takes events from his own life to explore wider themes of travel, religion, love in its various forms and what a good life is. His latest memoir, *What Days Are For*, growing out of a serious brush with death, is vintage Dessaix.



**JASPER FFORDE**  
*(United Kingdom)*

If anyone knows how to write a page-turning intertextual fantasy novel, it's Jasper Fforde, and readers who enjoy a farce but haven't discovered him yet are in for a treat. Critics compare him to Douglas Adams and fans hold a regular festival, the Fforde Ffiesta. With four series on the go, he will be joining us on the publication of his first standalone novel.

**PATRICK GALE**  
*(United Kingdom)*



Patrick Gale's many novels since his brilliantly titled 1985 debut, *The Aerodynamics of Pork*, are known for their acuity coupled with heart and soul. Combining family history with a personal story to tell, his latest novel, *A Place Called Winter*, follows across the Canadian prairies a man eventually confronted with the question of his own identity.



**CORNELIA FUNKE**  
(Germany)

Cornelia Funke — aka the “JK Rowling of Germany” — writes magical narratives that have been delighting children of all ages for more than 20 years, particularly now *The Thief Lord*, *Inkheart* and the *Ghosthunters* series are movies. As well as keeping younger audience members spellbound, Funke will talk about how her early career as a children’s social worker has influenced her. She joins us courtesy of the Goethe-Institut.

**SALLY GARDNER**  
(United Kingdom)



A hero for misfits, rascals and dyslexics, Sally Gardner is a multi-award-winning children’s author whose mission is to wake people up about kids with learning difficulties, and provide stories that appeal to those whose worldview is slightly different — just like her own. A dyslexic herself, and deemed unteachable at school, she has written books for children of all ages and been translated into more than 22 languages.



**CHRISTOPHER McDOUGALL**  
(United States)

As a foreign correspondent, Christopher McDougall covered wars in Rwanda and Angola before becoming inspired to write one of the

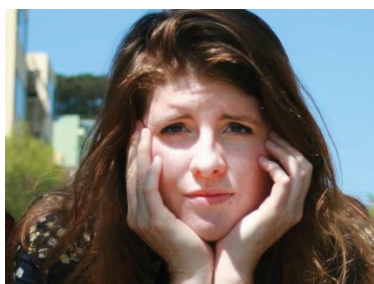
world's most acclaimed books on running, *Born to Run*. Next, the stories of World War II resistance fighters caught his attention, and he explores their extraordinary feats of endurance in his second book, *Natural Born Heroes*.

## **ANDREW O'HAGAN**

*(United Kingdom)*



From being an editor-at-large at *Esquire* magazine and contributing editor of the *London Review of Books* to ghost-writing Julian Assange's never-materialised memoir, Andrew O'Hagan is not afraid to get his teeth into challenging, contemporary subjects. His latest novel, *The Illuminations*, was longlisted for the 2015 Man Booker Prize and, like many of his books, is an original enquiry into the human experience.



## **MALLORY ORTBERG**

*(United States)*

Earlier this year, *Forbes* magazine named Mallory Ortberg one of the “new guard” of media makers, influencers and game changers in its annual “30 under 30” list. She's an outspoken, vital voice online and co-founder of the website *The Toast*. Her first book, *Texts from Jane*

*Eyre*, reimagines conversations between literary characters as though they were occurring by text in contemporary time.

## **MARIKO TAMAKI**

*(Canada)*



Staunch and original, Mariko Tamaki is an artist and writer best known for her graphic novel *Skim*, a collaboration with her cousin Jillian Tamaki. Like much of her work, it centres on adolescence, being a misfit, and the awkwardness and confusion of the teenage years. Tamaki confronts bravely yet sensitively issues such as self-harm, suicide, sexual orientation, taboo relationships and relationships in general.



## **ANIS MOJGANI**

*(United States)*

Anis Mojgani is a prince in the spoken word and slam poetry movement, a two-time US National Poetry Slam Champion, with a particularly engaging and uplifting style. When he appeared in New Zealand in 2014, he won many hearts and minds, and we're delighted to be bringing him back, in association with his previous presenters, WORD Christchurch and Golden Dawn in Auckland.

## NNEDI OKORAFOR

(United States/Nigeria)



Nnedi Okorafor's African-based science fiction, fantasy and magical realism is stark and evocative, tackling political and philosophical issues. Her novel *Lagoon* was a finalist in the British Science Fiction Awards. In a genre not bursting with women of colour, Okorafor is a leader and inspiration, and someone to read for those who feel alienated by other science fiction.



## ADAM RUTHERFORD

(United Kingdom)

With a background in genetics and evolutionary biology, Adam Rutherford is a contributor to *The Guardian*, presenter of BBC Radio's *Inside Science*, an award-winning documentary maker, and author of an ambigram book, *Creation: The Origin of Life/The Future of Life*. As a science adviser, his movie credits include *World War Z* and *Ex Machina*.



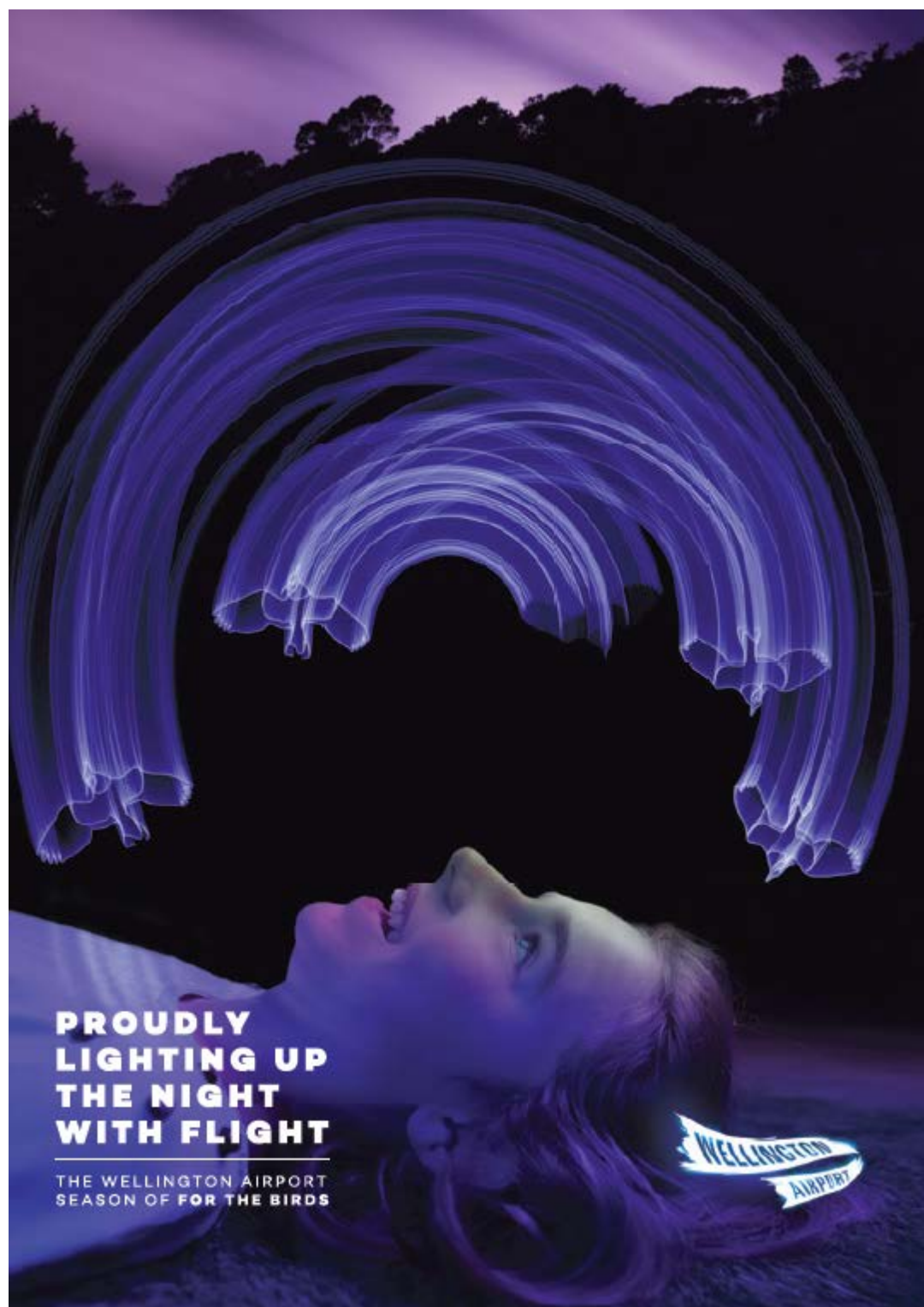
## SIMON WINCHESTER

(United Kingdom)



With 25 books to his name, Simon Winchester is a maven of popular narrative history. He is renowned for his books on subjects such as the eruption of Krakatoa and the creation of the *Oxford English Dictionary*. His more recent works include *Atlantic* and now *Pacific*, where he once again marries scholarship with a remarkable gift for storytelling.

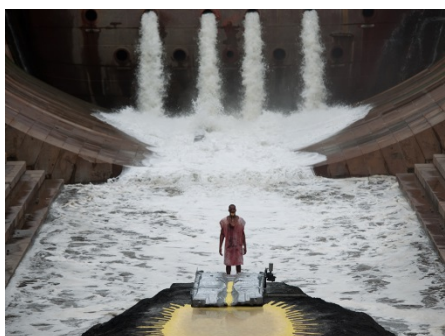
Among the Kiwi contingent you can expect during Writers Week are: author and illustrator Paul Beavis; raconteur, columnist and now novelist Joe Bennett; much loved children's author Joy Cowley; banned author Ted Dawe; Waitangi Tribunal member, historian and poet Aroha Harris; World Adventure Racing Champion Nathan Fa'ave; librettist, playwright, screenwriter and author Witi Ihimaera; fiction writer and creative writing teacher Paula Morris; writer and performer Courtney Sina Meredith; science historian Rebecca Priestley; bestselling novelist and sector advocate Catherine Robertson; and poet and Man Booker Prize-longlisted novelist Anna Smaill.



**PROUDLY  
LIGHTING UP  
THE NIGHT  
WITH FLIGHT**

THE WELLINGTON AIRPORT  
SEASON OF FOR THE BIRDS

WELLINGTON  
AIRPORT



**RIVER OF FUNDAMENT**  
**WRITTEN AND DIRECTED BY**  
**MATTHEW BARNEY, MUSIC**  
**COMPOSED AND DIRECTED BY**  
**JONATHAN BEPLER**  
*(United States)*

*River of Fundament* is New York-based artist Matthew Barney's latest feature film. The director and creator of ground-breaking series *The Cremaster Cycle* is described by *The Daily Telegraph* as the "visionary artist and film-maker ... behind some of the most arresting, strange and beautiful images of our time". Barney's nearly six-hour epic is a cinematic adaptation of Norman Mailer's novel *Ancient Evenings*. It combines narrative-based cinema with filmed elements of performance, sculpture and theatre. In collaboration with composer Jonathan Bepler, Barney reimagines Mailer's hypersexualised story of Egyptian gods and the seven stages of reincarnation as a seven-act opera within a backdrop of the rise and fall of the American car industry. With sets including a replica of Mailer's Brooklyn apartment, and featuring Maggie Gyllenhaal, Paul Giamatti, Elaine Stritch and Ellen Burstyn, this intense, multidimensional experience is a sprawling allegory of death and rebirth.

*Produced by Matthew Barney and Laurenz Foundation. This exclusive New Zealand screening has been organised and facilitated by the Adam Art Gallery Te Pātaka Toi at Victoria University of Wellington.*

**WHEN**

SAT 19 MAR, 6PM

**WHERE**

EMBASSY THEATRE

## TICKETS

EARLY BIRD A\$45 AND STUDENT A\$35  
A\$49, STUDENT A\$39

## DURATION

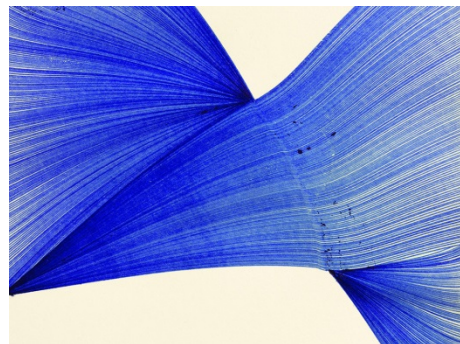
5HRS 52MINS (PLUS TWO 30MIN INTERMISSIONS)

**Strictly 18+** Contains explicit content that may cause offence.

Image: Matthew Barney and Jonathan Bepler, *River of Fundament*, 2014, production still, © Matthew Barney, photo by Hugo Glendinning.

## LINIE LINE LINEA — CONTEMPORARY DRAWING

**FREE**



Curated by Volker Adolphs at Kunstmuseum Bonn, this exhibition features 20 contemporary artists working in Germany, who explore different approaches to drawing. A New Zealand exclusive.

Presented with support from Institut für Auslandsbeziehungen and Goethe-Institut Wellington.

## WHEN

FRI 26 FEB — SUN 20 MAR

## WHERE

ADAM ART GALLERY

Image: detail, Thomas Müller, *Untitled*, 2008, ballpoint pen on paper, 297 x 210 cm. Courtesy of the artist.



## **JULIAN DASHPER AND FRIENDS**

**FREE**

Julian Dashper died in 2009, aged 49. This show offers a tribute to this key New Zealand artist. Dashper made art about art. Some works were perverse homages to other artists, others addressed the workings of the art business. From the mid-1990s, he increasingly exhibited overseas. Today, he represents a transitional figure between the “New Zealand painting” that preceded him and the post-national, post-medium contemporary art that followed. As Dashper’s works were in dialogue with art history, this show presents works in conversation with works by other artists, including Colin McCahon, Rita Angus, Milan Mrkusich, Gordon Walters and Billy Apple.

### **WHEN**

SAT 5 DEC 2015 — MON 25 APR 2016

### **WHERE**

CITY GALLERY WELLINGTON

Image: Julian Dashper, *The Colin McCahons*, 1992, Chartwell Collection, Auckland Art Gallery Toi o Tāmaki 2001.

# UNSEEN CITY: GARY BAIGENT, RODNEY CHARTERS AND ROBERT ELLIS IN SIXTIES AUCKLAND

FREE



In the 1960s, as new motorways enabled suburban sprawl, Auckland's population passed half a million. This show is a snapshot of that moment, in photography, film and painting. Gary Baigent's 1967 Auckland photobook, *The Unseen City*, with its gritty aesthetic and bohemian attitude, was an antidote to the saccharine local picture books at the time. Rodney Charters' 1966 Auckland road movie, *Film Exercise*, features Queen St nightlife and a soundtrack by the La De Da's. Robert Ellis's drawings show how his famous *Motorway* paintings were grounded in his experience of his newly adopted city.

*A joint project with Te Uru, Titirangi.*

## WHEN

SAT 21 NOV 2015 — SUN 13 MAR 2016

## WHERE

CITY GALLERY WELLINGTON

Image: detail, Gary Baigent, *John Carlaw, David Brady, Donald Gifford and Samantha Groves, Kiwi Tavern, 1969*. Courtesy of the artist and Peter McLeavey Gallery, Wellington.





## CAMILLE HENROT: GROSSE FATIGUE

FREE

French artist Camille Henrot's encyclopaedic video *Grosse Fatigue* (2013) takes on the history of the universe. Henrot mashes scientific history and creation stories, the rational and the mythic, computers and primitive mindsets. Still and moving images appear in overlapping pop-up windows as if on a computer screen, suggesting that a vast database underpins the work. Henrot was awarded the Silver Lion for *Grosse Fatigue* when it debuted in the 2013 Venice Biennale.

### WHEN

SAT 21 NOV 2015 — SUN 13 MAR 2016

### WHERE

CITY GALLERY WELLINGTON

Image: detail, Camille Henrot, *Grosse Fatigue*, 2013. Courtesy of the artist, Silex Films and Galerie Kamel Mennour, Paris.

## NGĀ TOI / ARTS TE PAPA

FREE



During the Festival, Te Papa is hosting a vibrant season of *Ngā Toi / Arts Te Papa* — the museum's ever-changing showcase of works drawn from the national art collection. A highlight is *New Zealand Photography Collected*, an exhibition that showcases hundreds of Te Papa's rare and fascinating photographs, including works by luminaries such as Alfred Burton, Brian Brake, Marti Friedlander, Laurence Aberhart, Anne Noble and Gavin Hipkins. It coincides with a lavish new book from Te Papa Press, *New Zealand Photography Collected*, written by Te Papa curator Athol McCredie.

### WHEN

FRI 6 NOV 2015 — AUG 2016

### WHERE

TE PAPA

Image: Marti Friedlander, *Tony Fomison*, 1977-79, black and white photograph, gelatin silver print. Purchased 2007, Te Papa.





## DREAMWORKS ANIMATION: THE EXHIBITION

From the studio that brought you *Shrek*, *Madagascar* and the awesome *Kung Fu Panda* comes an exhibition exclusive to Te Papa: a celebration of 20 years of DreamWorks Animation. It includes rare concept drawings, models, interviews and original artworks. Get creative with the immensely popular Animation Desk interactive, and enjoy the immersive Dragon Flight experience from *How to Train Your Dragon*.

*Exhibition developed by the Australian Centre for the Moving Image (ACMI) and DreamWorks Animation.*

### WHEN

SAT 12 DEC 2015 — MON 28 MAR 2016

### WHERE

TE PAPA

### TICKETS

ADULTS \$15, CHILDREN \$6

Image: *Madagascar*, 2005, artist Craig Kellman. ©2015 DreamWorks Animation LLC. All Rights Reserved.

## LIU JIANHUA

FREE



From the Venice Biennale to The Dowse Art Museum. One of China's best known contemporary artists, Liu Jianhua will present two full-gallery installations: a signature work of over 1,500 everyday objects cast in white porcelain, and a new work of glistening pools of gold-coated porcelain.

### WHEN

SAT 20 FEB — SUN 10 JUL

### WHERE

THE DOWSE ART MUSEUM, LOWER HUTT

Image: detail, Liu Jianhua, *Regular Fragile* installation view at Venice Biennale, 2003.



## SHAPESHIFTER SCULPTURE 2016

*Shapeshifter Sculpture* returns to Lower Hutt's beautiful public gardens. Enjoy the experience of wandering through the gardens encountering sculptures by emerging and established New Zealand artists. All works for sale. Picnickers welcome.

### WHEN

FRI 26 FEB — SUN 20 MAR

### WHERE

LOWER HUTT CIVIC AND RIDDIFORD GARDENS

### TICKETS

SEE [SHAPESHIFTER.ORG.NZ](http://SHAPESHIFTER.ORG.NZ) FOR DETAILS

Image: Courtesy of *Shapeshifter*.

# DAVID BURNETT: THE PRESIDENTS — FROM JFK TO OBAMA

FREE



Award-winning American photojournalist David Burnett is one of the few photographers to have photographed all US Presidents since John F Kennedy. From iconic statesmen such as JFK, to Richard Nixon's downfall, and the significance of Barack Obama's election, these historical moments have reverberated around the world. Spanning five decades, Burnett's images are markers of time and provide an up-close and unique perspective. Toured by The Australian Centre for Photography, this is the first time these images have been exhibited in New Zealand.

*With support from the Embassy of the United States of America.*

## WHEN

SAT 20 FEB – SUN 15 MAY

## WHERE

EXPRESSIONS, UPPER HUTT

Image: David Burnett, *Ronald Reagan and Soviet Premier Mikhail Gorbachev, with their interpreters, during their first summit, Geneva, 1985.* Courtesy and © of the artist.



## ADAM PORTRAITURE AWARD 2016

**FREE**

Showcasing the enormous range of contemporary portraiture in New Zealand, this is the country's premier portrait competition. The winner will be judged by Mette Skougaard, Director of the Det Nationalhistoriske Museum Frederiksborg Slot, Denmark. You can be the judge too, as your vote will help decide the People's Choice Prize.

### **WHEN**

THU 25 FEB – SUN 29 MAY

### **WHERE**

NEW ZEALAND PORTRAIT GALLERY

Image: detail, Henry Christian-Slane, *Tim*, oil on canvas, winner of the 2014 Adam Portraiture Award. Collection New Zealand Portrait Gallery.

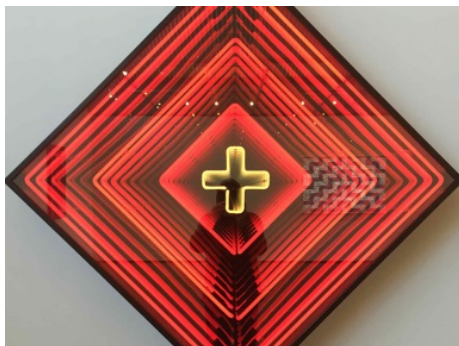
**GEORGE NUKU:  
BOTTLED OCEAN 2116**

**FREE**



*Bottled Ocean 2116* presents an expansive translucent double-hulled waka. Floating in space, it is surrounded by imagined creatures of the deep created from recycled plastics. *Bottled Ocean 2116* acts as both a vessel of hope and warning for the future.

Image: George Nuku, *Bottled Ocean 2114*, Installation at the Taipei Contemporary Art Center, Taiwan. Photo by Reinhart Cosaert.



**BOB JAHNKE: ATA:  
A THIRD REFLECTION**

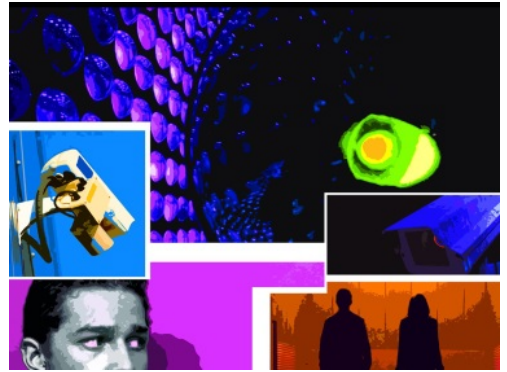
**FREE**

‘Ata’ in te reo Māori references artistic concerns such as reflection, form, light and shadow, but also refers to the act of deliberation. Professor Robert Jahnke’s *Ata* explores Māori creation narratives and Christian and prophetic imagery through light and reflection.

Image: detail, Bob Jahnke, *Navarro patiki*, 2015. Courtesy of the artist.

## KELCY TARATOA: PRIVACY VS PATRIOTIC IDEALISM

**FREE**



The loss of privacy through online monitoring and public surveillance has created a culture of Orwellian fear and paranoia. Kelcy Taratoa's latest series of paintings grapples with pop-culture referents to unpack these anxieties.

Image: detail, Kelcy Taratoa, *Zoom In*, 2015. Courtesy of the artist.

### **WHEN**

SUN 21 FEB – SUN 15 MAY

### **WHERE**

PĀTAKA ART + MUSEUM, PORIRUA



## THE BURDEN OF DREAMS: MARGRIET WINDHAUSEN AND PAUL VAN DEN BERGH

FREE

Margriet Windhausen and Paul van den Bergh both gained their art training in the Netherlands, and have been practising artists in New Zealand for 40 years. While reflecting modernist and surrealist art influences, they each have a unique voice in which the human figure becomes a vehicle for dreaming. Also showing: *Frances Hodgkins & Petrus van der Velden in The Field Collection*.

Image: Paul van den Bergh, *The Burden of Dreams*, pencil drawing, 1985, courtesy of the artist.

## ONCE THERE WAS A TREE: ANDREA GARDNER

FREE



Andrea Gardner explores the tension between domesticity and nature, artifice and reality, the familiar and the unexpected. She investigates how we perceive nature in a contemporary context and the ever-growing presence of man-made elements in the



environment. In many of her photographs nature is depicted as an image: to be reproduced, hung on the wall, worn or looked at in a book.

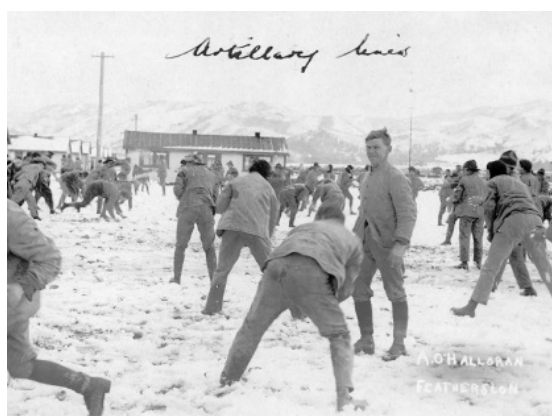
Image: detail, Andrea Gardner, *Once There Was a Tree*, 2014, digital photograph. Courtesy of the artist.

### **WHEN**

FRI 26 FEB – SUN 3 APR

### **WHERE**

MAHARA GALLERY, WAIKANAE



### **FEATHERSTON CAMP CENTENARY EXHIBITION: 1916-2016**

**FREE**

An estimated 60,000 men went through Featherston Military Training Camp between 1916 and 1918 – a majority of the New Zealanders who served overseas during World War I. This exhibition tells their story.

### **WHEN**

SAT 23 JAN – SUN 31 JUL

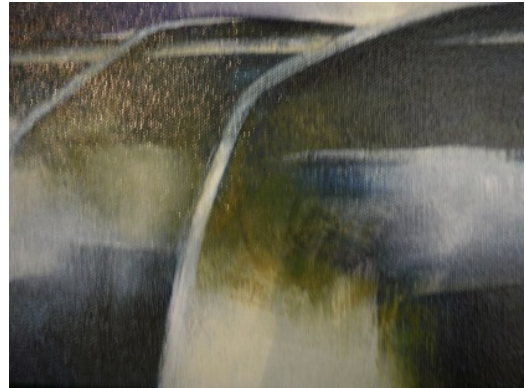
### **WHERE**

ARATOI WAIRARAPA MUSEUM OF ART AND HISTORY, MASTERTON

Image: detail, a snow fight at Featherston Camp in July 1918.  
Courtesy of Aratoi.

## ART FROM THE HEART

FREE



Artists and crafts people show work that expresses who they are and their approach to making art, including work they are deeply involved with now and special pieces from their collections. Their process will be illustrated via sketches, items of support, and writings about the concept.

### WHEN

SAT 20 FEB – MON 16 MAR

### WHERE

ACADEMY GALLERIES

Image: detail, Suzanne Herschell, *Wetlands*, 2015. Courtesy of the Artist.



## THE ATTIC

FREE

In this new permanent exhibition space, you can experience *Ngā Hau*, which combines installation art and the magic of cinema. Venture into a land where Moa roam ancient forests; soak up the culture on the city's most vibrant street; and see how the capital has developed over the years. All through intriguing and personal stories narrated by our forebears.

### WHEN

ONGOING

### WHERE

WELLINGTON MUSEUM

### *Other galleries to check out during the Festival:*

*Bartley + Company Art*

*Bowen Galleries*

*Enjoy Public Art Gallery*

*Hamish McKay Gallery*

*Page Blackie Gallery*

*Peter McLeavey Gallery*

*ROAR! Gallery*

*Solander: Works on paper*

*{Suite}*

*30upstairs*

*Thistle Hall*

## FESTIVAL ON THE ROAD

Artists from around the world venture out during the Festival to the greater Wellington region



### CHALK ABOUT CURIOUS SEED *(Scotland)*

Join Christine and Niels as they ask some BIG questions! What makes us who we are? Is it where we are from? Or how we talk? And ... doesn't everyone like pizza?

Recommended for ages 8+

**GREYTOWN — WHEN** TUE 8 MAR, 7PM **WHERE** KURANUI COLLEGE

**UPPER HUTT — WHEN** WED 9 MAR, 7PM **WHERE** THE GILLIES  
GROUP THEATRE AT EXPRESSIONS

**PORIRUA — WHEN** THU 10 MAR, 7PM **WHERE** PĀTAKA ART +  
MUSEUM

**TICKETS** EARLY BIRD GA\$35, GA\$39, CHILD GA\$18

**DURATION** 50MIN

## ARCHIE ROACH

*(Australia)*



Grab a ticket to this intimate concert with a beloved Australian artist and activist: the legendary Archie Roach.

**PORIRUA — WHEN** SAT 27 FEB, 7.30PM **WHERE** Pātaka Art + Museum

**TICKETS** EARLY BIRD GA\$39, GA\$49



## MODERN MĀORI QUARTET

*(New Zealand)*

Suit up for a fabulous evening of classic Māori showband music with a cheeky, charming twist. Featuring James Tito, Matariki Whatarau, Maaka Pohatu and Francis Kora.

**PARAPARAUMU — WHEN** FRI 18 MAR, 7PM **WHERE** SOUTHWARD THEATRE

A return bus will depart from Ōtaki via Te Horo and Waikanae travelling to Southward Theatre for this performance. Book a bus seat with your ticket for an extra \$5 per person (seats are limited).

**MASTERTON — WHEN** SAT 19 MAR, 7PM **WHERE** TOWN HALL

**LOWER HUTT — WHEN** SUN 20 MAR, 6PM **WHERE** LITTLE THEATRE

**TICKETS** EARLY BIRD GA\$35, GA\$39, CHILD GA\$15

**DURATION** 1HR 15MINS (NO INTERVAL)

**MIYATA-YOSHIMURA-SUZUKI  
TRIO**

**WITH MUSIC BY SAMUEL HOLLOWAY,  
DYLAN LARDELLI AND CHRIS GENDALL**  
*(Japan/New Zealand)*



This cutting-edge fusion of East and West brings together three of New Zealand's composers with this virtuoso Japanese trio, who perform on the shō, koto and recorder.

**LOWER HUTT — WHEN** MON 29 FEB, 7.30PM **WHERE** ST MARK'S CHURCH

**TICKETS** DOOR SALES ADULTS GA\$38, STUDENTS WITH ID GA\$10, SCHOOLCHILDREN WITH AN ADULT FREE

Tickets available in New Year at [www.chambermusic.org.nz](http://www.chambermusic.org.nz)

*Presented by Chamber Music Hutt Valley in association with New Zealand Festival and Chamber Music New Zealand.*



## **WAVES**

**ALICE MARY COOPER**

*(Australia/United Kingdom)*

A tall story about how a young woman invented the butterfly stroke, *Waves* is about having the courage to swim against the tide of history to achieve something truly incredible.

Recommended for ages 8+

**ŌTAKI — WHEN** WED 2 MAR, 7PM **WHERE** CIVIC THEATRE

**CARTERTON — WHEN** THU 3 MAR, 7PM **WHERE** EVENTS CENTRE

**TICKETS** EARLY BIRD GA\$35, GA\$39, CHILD GA\$18

**DURATION** 50MINS

## WRITERS ON THE ROAD



### MURIEL BARBERY IN CONVERSATION – PHILOSOPHY & FICTION *(France)*

Beloved by readers everywhere, *The Elegance of the Hedgehog* by Muriel Barbery sold more than five million copies. Hear the former philosophy professor in conversation about her new novel, *The Secret Life of Elves*.

**WAIKANAE — WHEN** FRI 11 MAR, 4PM **WHERE** MAHARA GALLERY

**TICKETS** GA\$19

**DURATION** 1HR (FOLLOWED BY A BOOK SIGNING)

### SIMON WINCHESTER & THE PACIFIC OCEAN *(United Kingdom)*



With 25 narrative non-fiction books to his name, enjoy a discussion with former journalist Simon Winchester on the geopolitics of our



region as explored in his latest work, *Pacific: The Ocean of the Future*.

**MASTERTON — WHEN** WED 9 MAR, 7PM **WHERE** ARATOI  
WAIRARAPA MUSEUM OF ART AND HISTORY

**TICKETS** GA\$19

**DURATION** 1HR (FOLLOWED BY A BOOK SIGNING)



**ROBERT DESSAIX**  
**ON ENID BLYTON**  
*(Australia)*

This lecture at the Sydney Writers' Festival enchanted Writers Week Programme Manager Kathryn Carmody. Enjoy Robert Dessaix's playful description of the lasting influences of a childhood reading of Enid Blyton.

**LOWER HUTT — WHEN** SAT 12 MAR, 7PM **WHERE** THE DOWSE ART  
MUSEUM

**TICKETS** GA\$19

**DURATION** 45MINS (FOLLOWED BY A BOOK SIGNING)

## ANIS MOJGANI IN ACTION

*(United States)*



A prince in the spoken word and slam poetry movement, Anis performs with a contagious passion. Returning to Aotearoa in association with WORD Christchurch and Golden Dawn.

**PAEKAKARIKI — WHEN** SUN 13 MAR, 2:30PM **WHERE**  
ST PETER'S VILLAGE HALL

**TICKETS** GA\$19

**DURATION** 1HR (FOLLOWED BY A BOOK SIGNING)

## **ON THE ROAD PARTNERS**



**Kāpiti Coast District Council**  
**Ōtaki Community Board**  
**Porirua City Council**  
**Mana Community Grants Foundation**  
**Masterton District Council**  
**Hutt City Council**  
**Carterton District Council**  
**Greytown Trust Lands**  
**Lands Trust Masterton**  
**Trust House Community Enterprise**  
**Upper Hutt City Council**

## ARTIST TALKS

**WHEN:** LUNCHTIMES, 1 — 2PM

**WHERE:** ALL ARTIST TALKS TAKE PLACE UPSTAIRS AT THE ST JAMES THEATRE, UNLESS NOTED

**FREE**

We love talking about art almost as much as we like experiencing it live on stage. Make the most of your lunch break and head behind the scenes to hear from some of our international and New Zealand artists. Be part of the discussion and bring your own questions, too. Follow online with live tweets [@nzfestival](#) and [#upyourarts](#)

## ART CAN CHANGE THE WORLD

Tiffany Singh discusses the role of social practice in the changing face of the arts. Hear about how she harnesses the nature and power of collaboration in her work, including her huge flag project *Fly Me Up to Where You Are New Zealand*.

**WHEN:** SUN 28 FEB

## BORN IN A BARN

Each Kneehigh show starts its life with a small dedicated team, who retreat to the rural isolation of the company's Cornish barns, where they cook, keep warm, and create together. Learn more from Kneehigh's Mike Shepherd, director of *Dead Dog in a Suitcase*.

**WHEN:** MON 29 FEB

## SKETCH TO STAGE

Theatre Stampede and Nightsong Productions are known for their ingenious staging of theatre works, first with the award-winning *360 – a theatre of recollections*, and now with *Te Pō*. Find out how they brought it from sketch to stage, with designer Andrew Foster, director Ben Crowder and writer Carl Bland.

**WHEN:** THU 3 MAR

**WHERE:** SOUNDINGS THEATRE, TE PAPA

## DOUBLE VISION

Composer Ross Harris and librettist Vincent O’Sullivan have enjoyed a fruitful working partnership over many years. Discover how their creative collaboration enables them to achieve a single artistic vision, and how the world premiere of their new opera, *Brass Poppies* came into being.

**WHEN:** FRI 4 MAR

## DO I BELONG HERE?

Chunky Move’s brilliant *Complexity of Belonging* explores identity in the age of social media. The creative team behind the work, Anouk van Dijk and Falk Richter, are celebrated worldwide for making theatre that feels in and of its time. Join Anouk and some of the cast to discuss this burning topic and their extraordinary work.

This talk will be New Zealand Sign Language interpreted

**WHEN:** THU 10 MAR

## BEING JONI MITCHELL

Ask 10 different artists to take on Joni Mitchell's astonishing songbook and you'd have 10 entirely different results. Director Shane Bosher and singer Julia Deans talk about how they approached it in their homage to the legendary artist, *Both Sides Now*.

**WHEN:** SUN 13 MAR

## BREAKING BARRIERS

Back to Back is an ensemble of people with disabilities who say they "make theatre and trouble the world". Hear from the company as they explain how their work *small metal objects* questions the assumptions of what is possible in theatre, along with the assumptions we all hold about ourselves and each other.

**WHEN:** TUE 15 MAR

## A NOVEL APPROACH

*The ACB with Honora Lee* author Kate De Goldi talks with Jane Waddell, who adapted the novel for Circa's Festival production, about the process of bringing this beloved New Zealand story to life for a theatre audience.

**WHEN:** WED 16 MAR

## DANCING FOR YOUR LIFE

Don't miss this rare chance to meet members of the original *Café Müller* cast. Find out what it is like to have spent a career dancing

with Tanztheater Wuppertal Pina Bausch, and to have worked with the late, great dance icon herself.

**WHEN:** FRI 18 MAR



## **FESTIVAL AWARDS**

*The Dominion Post* Festival Awards are where we celebrate the best of the best of the arts the 2016 Festival has brought you from New Zealand and around the world. The critics have their say and so do you — and who knows, you may even agree. Who will it be in 2016?

## **CRITICS' CHOICE**

*The Dominion Post* critics will be reviewing hundreds of performances across the city during the Festival. On the final weekend, they'll come together to deliberate, debate and decide the Critics' Choice winners for 2016. Their picks will be published in *The Dominion Post* and online at [dompost.co.nz](http://dompost.co.nz).

## **READERS' CHOICE**

Have your say and vote for your favourite Festival show for the 2016 *Dominion Post* Readers' Choice Award. Voting details will be published in early 2016 in *The Dominion Post*. To find out more, head to [dompost.co.nz](http://dompost.co.nz). To receive *The Dominion Post* delivered daily to your door, subscribe today – details at [dompost.co.nz](http://dompost.co.nz).

## SCHOOLFEST

FRIDAY 26 FEB – SUNDAY 20 MAR 2016

An extraordinary work of art experienced when you're young stays with you for life. It can transform you and change your whole outlook on the world. So make sure you check out SchoolFest, a dynamic learning programme that gives students the chance to experience and workshop with some of the best New Zealand and international artists around. Tickets can only be bought through schools, so talk to your teacher about how to get involved, and keep an eye out for the SchoolFest brochure in schools from early November 2015. For your own copy, contact Emma Deakin and the SchoolFest team by email [schoolfest@festival.co.nz](mailto:schoolfest@festival.co.nz) or telephone (04) 912 0406. For regular updates subscribe to our enews at [festival.co.nz/schoolfest](http://festival.co.nz/schoolfest)

## SCHOOLFEST OFFERS

Major discounts to Festival performances (tickets cost students \$15 for New Zealand and \$18 for international work)

Unique workshops from world-renowned Festival performers and creatives

Exceptional shows touring to Greater Wellington communities

SchoolFest Writers Day

Special schools-only performances of Festival shows, including the Jazz at Lincoln Center Orchestra's Jazz for Young People

Exclusive opportunities such as attending the dress rehearsal of Tanztheater Wuppertal Pina Bausch for free



## WITH SUPPORT FROM



## FESTIVAL PEOPLE

### PATRON

The Governor-General, His Excellency Lieutenant General The Right Honourable Sir Jerry Mateparae, GNZM, QSO

### BOARD OF TRUSTEES

Kerry Prendergast CNZM (Executive Chair)

John Allen

Margie Beattie

Howard Greive

John Ryan

Paul Ridley-Smith

Elizabeth Kerr MNZM

Celia Wade-Brown

### FESTIVAL FOUNDATION TRUSTEES

Sir John Anderson

Sir David Gascoigne

John McCay

### FESTIVAL TEAM

Shelagh Magadza *Artistic Director*

Sue Paterson ONZM *Executive Director*

Suzy Cain *Executive Coordinator*

Rose Blake *Reception & Administration Assistant*

### MARKETING AND DEVELOPMENT

Meg Williams *Head of Marketing and Development*

Lara Signal *Marketing and Communications Manager*  
Heather O'Carroll *Partnerships Coordinator*  
Sarah Chandler *Media Communications Advisor*  
Megan Duff *y Media Coordinator*  
Guy Somerset *Content Editor*  
Faith Wilson *Content Assistant*  
Lewis Richardson *Ticketing, Marketing Special Projects*  
Gary Barker *Ticketing Coordinator*  
Henrietta Wallace *Project Analyst*  
Matt Gleeson *Designer*

## **PROGRAMMING**

Anna Cameron *Head of Programming*  
Eva Prowse *Programme Manager*  
Kathryn Carmody *Writers Week Programme Manager*  
Claire Mabey *Writers Week Coordinator*  
Josefine Beech *Logistics Manager*  
Brigid Connor *Logistics Coordinator*  
Rebecca Mordaunt *Education and Community Producer*  
Emma Deakin *Education and Community Coordinator*  
Hayley Dingwall *Music Producer*  
Kura Moeahu *Māori Cultural Adviser*  
Gina Moss *Project Manager — Le Grand ContinentalR*  
Dilys Grant *Royal Edinburgh Military Tattoo Project Manager*  
Suzanne Peri-Chapman *Royal Edinburgh Military Tattoo Project Assistant*  
Jamie Wilson *Royal Edinburgh Military Tattoo Logistics Manager*

## **TECHNICAL**

Nick Kyle *Head of Technical and Production*  
Ali Kirkpatrick *Technical Administrator*  
Danny Hones *Technical Operations Manager*  
Emily Hakaraia *Head of Sound*  
Chris Sanders *Head of Lighting*  
Natasha James *Production Manager*

Nick Creech *Production Manager*  
Bonnie Burrill *Production Manager*  
Martin Streeter *Construction Manager*  
Anthony King *Assistant Technical Administrator*  
Shannon Brosnahan Inglis *Production Assistant*

### **BUSINESS SERVICES TEAM**

Denise Brennock *Head of Business Services*  
Soichi Mukai *Assistant Accountant*  
Nigel MacIntyre *Accounts Administrator*  
Rowan Aitken *ICT Coordinator*

### **WITH THANKS TO**

The Culture Club Committee  
Writers Advisory Group  
Workplace Ambassadors  
Volunteers and Interns

### **CAMPAIGN TEAM**

Assignment *Brand*  
Springload *Digital*  
Cansino & Co *Identity Design*  
Matt Gleeson *Design*  
Joseph Kelly *Photography*  
Wai Mihinui, Danica Prowse *Assistant Design*  
Stem Creative *Video*  
Mediastone *Media Planning*  
Sputnik *Communications*  
AdProtocol *Digital Advertising*  
Dot Loves Data *Research*

### **With special thanks to our brave and brilliant audience models:**

Taiga Chave, Yong-Le Chong, Maisie Reweti-Gould, Lucy Aitchison,  
Esther Lees, Anna Ronberg, Diogo Freire.



**BOB JAHNKE**  
21 Feb – 15 May 2016

Bob Jahnke Nanyang Institute 2014  
Courtesy the artist



**MAULDS MILLER**  
SPECIALIST + INNOVATOR  
Proudly Supporting Parks



**weta**  
DIGITAL

**weta**  
DIGITAL

Proud Supporter of the New Zealand Festival



**Congratulations on 30 years  
of bringing a world of arts  
to New Zealand**

wetafx.co.nz  
weta digital vfx on facebook  
wetafx on twitter

**NEW ZEALAND  
FESTIVAL** 



## EAT & DRINK



### AMORA HOTEL

170 WAKEFIELD ST  
(04) 471 5711 / AMORAHOTELS.COM

Our award-winning Grill restaurant provides 5-star dining in a perfect location. Creating exceptional food is our passion and we pride ourselves on our attention to detail and high level of service.

Whitebait

### WHITEBAIT

CLYDE QUAY WHARF  
(04) 385 8555 / WHITE-BAIT.NZ

Whitebait celebrates the best seasonal local produce and New Zealand seafood – we focus on the freshest ingredients, cooked simply, using our Jooper charcoal fired oven. 2015 winner of Cuisine's "Good Food" Best New Restaurant in New Zealand.

CHARLEY NOBLE  
LATTERY & BAR

### CHARLEY NOBLE

HUDDART PARKER BUILDING, POST OFFICE SQ  
0508 CHARLEY / CHARLEYNABLE.CO.NZ

A Wellington favourite, serving up fresh, delicious European food straight from the fire pit! Everyone knows that food tastes better when cooked over natural fuels, so indulge in our wondrous array of smoky delights.



### COCO AT THE ROXY

THE ROXY CINEMA, 5 PARK RD, MIRAMAR  
(04) 388 5555 / COCOATTHEROXY.CO.NZ

Inspired dining, award-winning cocktails and a passionate team all housed in a beautifully restored art deco cinema. Experience the magic of the movies alongside delicious local fare in this iconic and welcoming environment.



### CHOW

45 TORY ST  
(04) 382 8585 / CHOW.CO.NZ

Fresh Asian cuisine in a relaxed modern environment. Vegetarian and vegan friendly with gluten and dairy-free options, delicious low calorie cocktails, vegan and organic wines. Open every day from noon until midnight. Takeaways always available.

LIBRARY  
red bar / wine bar / live music / events & more

### THE LIBRARY

53 COURTENAY PL  
(04) 382 8593 / THELIBRARY.CO.NZ

Hidden away upstairs in the heart of Courtenay Place. Frivolous cocktails, obscure wines, delicious desserts, exceptional cheeses, scrumptious savoury snacks and live music make this a great place to meet before or after a show. Open every day from 5pm.

motel

### MOTEL

UPSTAIRS, FORRESTER'S LN (OFF TORY ST)  
(04) 384 9084 / MOTELBAR.CO.NZ

Motel Bar is a hidden tropical tiki oasis serving delicious island-style cocktails where everyone is welcome, from early evening until well into the wee hours. Look out for the colourful street art and bright pink neon lights.

THE Little Waffle SHOP

### THE LITTLE WAFFLE SHOP

52 COURTENAY PL  
THELITTLEWAFFLESHOP.CO.NZ

The cutest little waffle shop in the coolest little capital city. Loved by locals and tourists alike. Give yourself a special treat with sweet flavour toppings like caramel cookie crumble and berry berrylicious. Open late every night of the week.

NEW ZEALAND FESTIVAL

# ARTICLE MAGAZINE

Read our new digital magazine

[festival.co.nz/article](http://festival.co.nz/article)

Featuring the world's best arts writers.  
Because we love the arts as much as you do.

## SLEEP



### QT MUSEUM HOTEL

90 CABLE ST / (04) 802 8900  
MUSEUMHOTEL.CO.NZ

QT Museum Hotel is New Zealand's most admired design hotel. Located on Wellington's waterfront, it boasts a comprehensive collection of contemporary art, putting it in the world's top 10 of its genre.



### WILLIS VILLAGE

142 WILLIS STREET, WELLINGTON  
(0800) 508 025 / VILLAGEGROUP.CO.NZ

'Urban garden' serviced apartments in the heart of Wellington. Willis Village boasts a unique architectural design, spacious rooms with all the amenities you require, and balconies that overlook the city's sights.



### JAMES COOK HOTEL GRAND CHANCELLOR

147 THE TERRACE / (04) 499 9500  
RESERVATIONS@JAMESCOOKHOTEL.CO.NZ

Located in the heart of the city, this 4.5 star hotel offers 268 rooms and suites, 2 restaurants and bars, an in house gym and Infuse Day Spa.



### TRINITY HOTEL

166 WILLIS ST / 0608 TRINITY (874 648)  
TRINITYHOTEL.CO.NZ

This popular hotel in the cultural hub of the city is ideal for business and leisure travellers. With an outstanding on-site restaurant and Wellington's most spectacular rooftop bar, parking, free wifi and a gym.



### CQ HOTELS WELLINGTON

213-223 CUBA ST / (04) 385 2153  
CQWELLINGTON.COM

CQ Hotels Wellington is located right on Cuba St in the vibrant heart of the city. With two beautifully renovated hotels and a café, bar and restaurant - you can't go wrong!

## NEW ZEALAND SCHOOL OF DANCE

PROVIDING  
WORLD CLASS  
TRAINING IN  
CLASSICAL AND  
CONTEMPORARY  
DANCE



[nzschooldance.ac.nz](http://nzschooldance.ac.nz)

New Zealand School of Dance students photographed by Stephen A'Court.

## TOI whakaari new zealand drama school

DEVELOPING INNOVATIVE  
AND INTUITIVE STAGE AND  
SCREEN PROFESSIONALS  
FOR 45 YEARS



[toiwhakaari.ac.nz](http://toiwhakaari.ac.nz)

**Te Whaea: National Dance & Drama Centre**, 11 Hutchison Road, Newtown, Wellington

## PUKEAHU NATIONAL WAR MEMORIAL PARK

### HOURS

The National War Memorial is open  
10am – 5pm daily.

Last Post Ceremony daily at 5pm.

### VISIT

The National War Memorial encompasses  
the Hall of Memories, Canillon and Tomb  
of the Unknown Warrior.

### CONTACT

[www.Pukeahu.nz](http://www.Pukeahu.nz)  
[nwm@mch.govt.nz](mailto:nwm@mch.govt.nz)  
+ 64 04 385 2496

Greatly  
supported by

**Manatū  
Taonga**  
Ministry  
for Culture  
& Heritage

**Absolutely Positively  
Wellington City Council**  
Māori Kōwhiri

Pukeahu National War Memorial Park is the national place  
for New Zealanders to remember and reflect on this  
country's experience of war, military conflict and  
peacekeeping. The Great War Exhibition, created by Sir  
Peter Jackson, adjoining the park is a testament to  
and commemoration of the New Zealanders who fought  
and died on foreign fields during the First World War.

Pukeahu National War Memorial Park  
and The Great War Exhibition are  
located on Buckle Street in  
central Wellington.

### HOURS

The Exhibition is open  
9am – 6pm every day of the year  
with the exception of Christmas Day.

### VISIT

The Great War Exhibition is housed in the  
historic Dominion Museum Building.

### CONTACT

[www.GreatWarExhibition.nz](http://www.GreatWarExhibition.nz)  
[info@GreatWarExhibition.nz](mailto:info@GreatWarExhibition.nz)  
+ 64 4 978 2500

**THE GREAT WAR  
EXHIBITION**  
SO WE ALWAYS REMEMBER



**Museums  
Wellington**

# Sharing our stories

Join us to find out what makes Wellington  
the world's coolest little capital!

**Wellington  
Museum**

**Cable Car  
Museum**

**Nairn Street  
Cottage**

**Space  
Place**

Find out more at [museumswellington.org.nz](http://museumswellington.org.nz)





**CHOW**

Fresh Asian cuisine, in a relaxed modern environment. Vegan and vegetarian friendly with dairy and gluten free options.



45 Tory St  
7 Days Noon - Midnight  
04 382 8585

Free Wifi / Corporate catering  
Large bookings welcome / Set menu options  
Takeaways available  
Hotel chargebacks by arrangement



 facebook.com/chowwellington  
 @chowwellington #chowgram  
 @chowwellington  
 @chowwellington

[www.chow.co.nz](http://www.chow.co.nz)



# GET UP CLOSE

## WETA WORKSHOP

### CAVE & TOUR

TOURS RUN 9.30AM - 5PM, 7 DAYS

Learn about the artistry behind 20 years of creativity. Discover creatures, costumes, miniatures and more from *The Hobbit*, *The Lord of the Rings*, *Avatar*, *King Kong*, *District 9* and others.

**BOOK NOW**

[www.wetaworkshop.com/tours](http://www.wetaworkshop.com/tours)  
or at Wellington iSITE



#### Nau mai, haere mai - Welcome to Karaka Cafe

Located on Wellington's Waterfront, close to Te Papa, Karaka Cafe offers delicious breakfast, lunch and platter menus with a modern twist on "Maori kai/food". Enjoy the ambience of our beautiful indoor environment, or the outside terraced grassed areas on Frank Kitts lagoon. Our cafe is located directly beside the "Wharewaka" which houses two carved wakas, open for viewing daily. A "must do" for our locals and visitors to Te Whanganui-a-tara/Wellington.

Open 7 days  
Phone: (04) 918 8389 - [www.karakacafe.co.nz](http://www.karakacafe.co.nz)



**Karaka** cafe

nau mai haere mai  
welcome

# FRINGE

IT'S YOUR BIT ON THE SIDE

12 FEB - 5 MAR 2016

[FRINGE.CO.NZ](http://FRINGE.CO.NZ)



HEADS UP

19<sup>th</sup>-20<sup>th</sup> MARCH 2016

**CUBADUPA**

[www.cubadupa.co.nz](http://www.cubadupa.co.nz)



## KALEIDOSCOPES

CHAMBER MUSIC NEW ZEALAND  
CONCERT SEASON 2016

[chambermusic.co.nz](http://chambermusic.co.nz)



Chamber Music  
New Zealand

## THE DOWSE ART MUSEUM

### A FESTIVAL OF THE ARTS EVERY DAY OF THE YEAR

45 Latings Road, Lower Hutt | [dowse.org.nz](http://dowse.org.nz)



### Stunning views of Wellington

While you are in Wellington visit the historic Matiu  
Somes Island, enjoy cafes and galleries in Days Bay  
or take a trip around the harbour to experience  
stunning views of Wellington.

[eastbywest.co.nz](http://eastbywest.co.nz) / Metlink: 0800 801 700

springload 



## 88% of Kiwis browse the web on their phone.

Don't lose any more customers!  
Talk to us about making your digital  
experience work across any device.

[springload.co.nz](http://springload.co.nz) giving the web a good kick up the arts





刘建华

OPENS 20 FEB 2016

# LIU JIANHUA

## TRANSFER



**FREE ENTRY**

[dowse.org.nz](http://dowse.org.nz)  
45 Laings Road  
Lower Hutt

From the Venice Biennale to The Dowse Art Museum — this is the first time the work of Liu Jianhua, one of China's best known contemporary artists, will be shown in New Zealand.

*Liu Jianhua, Squares  
at Pace Beijing, 2015.  
Photo courtesy  
of Liu Jianhua Studio*

## **ACCESS INFORMATION**

It's *your* Festival and we'll do our best to make sure access is never a problem for you. Let ticketing staff know your requirements at the time of booking so they can make the necessary arrangements. If you have any questions about accessibility, please phone the Festival on (04) 903 5452 or email [ticketing@festival.co.nz](mailto:ticketing@festival.co.nz).

## **BOOKINGS**

If you have special seating requirements such as wheelchair access, hearing difficulties or you require companion seating, please phone Ticketek on 0800 842 538. If you have any problems making a booking, please contact the Festival on (04) 903 5452 or [ticketing@festival.co.nz](mailto:ticketing@festival.co.nz).

## **TRANSPORT INFORMATION**

Information about accessible parking and public transport in Wellington is available at [festival.co.nz/transport](http://festival.co.nz/transport).

## **PHYSICAL ACCESS**

For more details on the access available at specific venues, you can go to [festival.co.nz/access](http://festival.co.nz/access). All venues have limited wheelchair seating. Designated wheelchair spaces (where available) are sold at the lowest non-restricted view price in the house for that performance. We also offer one companion seat per wheelchair space at the same price.

## **FESTIVAL-GOERS WHO ARE DEAF OR HARD OF HEARING**

There are hearing loops available at the Michael Fowler Centre and St James Theatre. More information about hearing loops is available at [festival.co.nz/access](http://festival.co.nz/access). Please inform ticketing staff when booking if you wish to sit in a certain area of the venue.

## **NZSL/AUDIO DESCRIPTION**

Shows listed with these logos will be translated into New Zealand Sign Language or audio described. Audio description is auditory narration that is particularly useful for the blind or vision impaired where visual elements (such as scenes, settings, actions and costumes) are described during gaps in dialogue.

## **TIX FOR TWENTY SEE A FESTIVAL SHOW FOR \$20**

In the lead up to the Festival we'll offer tickets to selected shows for just \$20. You will need to sign up to the Tix for Twenty waitlist at [festival.co.nz/tixfortwenty](http://festival.co.nz/tixfortwenty) before 26 February 2016 to join and then like our Facebook page to keep an eye out for more details.

## **SUPPORTED BY**



## BOOKING FORM

92

## BOOKING FORM

## STEP 1: COMPLETE YOUR DETAILS

Contact name:	
Postal address:	Postcode:
Telephone no. (daytime):	Telephone no. (alternate):
Email address:	
Already a supporter of The Culture Club? <input type="checkbox"/> YES ( <i>Jump down to STEP 3!</i> ) <input type="checkbox"/> NO	

**STEP 2: WOULD YOU LIKE TO BECOME A SUPPORTER OF THE CULTURE CLUB?**

*You'll get invitations to exclusive events, early access to book tickets for year-round NZ Festival-run events, and curated content for culture lovers. Please note: you must be a supporter of The Culture Club if you would like us to process your form prior to 2 November.*

YES, I want to become a supporter of The Culture Club:

☐ Monthly donation (from \$5 per person) or ☐ Annual donation (from \$60 per person)

TOTAL AMOUNT \$

---

**First Supporter** Ms./Mrs./Miss/Mr./Dr First name: Last name:

**Second Supporter (optional)** Ms./Mrs./Miss/Mr./Dr First name: Last name:

Refer to [festival.co.nz/join](http://festival.co.nz/join) for more information about The Culture Club.

### STEP 3: CHOOSE YOUR EVENTS

*Any Early Bird price, where applicable, will be available until and including Monday 30 November, subject to availability.*

*If Ticketek receive your form by this date you will be charged the Early Bird ticket price. Otherwise, standard ticket prices will apply.*

SHOW/EVENT NAME	DATE	TIME	RESERVE (PREMIUM, A,B,C,D, GA)*	TICKETS REQUIRED		SUB TOTAL
				NO.	\$ PRICE	
e.g. Dead Dog In a Suitcase	29 Feb	7pm	A	2	\$89	\$138
					\$	\$
					\$	\$
					\$	\$
					\$	\$
					\$	\$
					\$	\$
					\$	\$
					\$	\$
					\$	\$
					\$	\$
<i>Ticket Booking Fee</i>						\$9.25

#### STEP 4: MAKE A DIFFERENCE AND MAKE AN ADDITIONAL ONE-OFF DONATION

(Tax deductible - our Charities Commission registration number is CC515946)

### STEP 5: PREFERRED METHOD OF DELIVERY

<input type="checkbox"/> Mail	<input type="checkbox"/> Venue Collection	<input type="checkbox"/> ezyTicket (emailed to your inbox)	<input type="checkbox"/> Courier (+\$4.50)	\$
<small>*Please note: you will be allocated the best available seats at the time of booking. All seat changes will be made to suit you in the pricing</small>				<b>TOTAL</b> \$

\*Please note: you will be allocated the best available seats at the time of booking. All enclsours will be made to as at you in the pricing reserve of your choice. Should the reserve you have selected not be available, you will be allocated seats in the next price reserve down.

**STEP 6: PAYMENT** (Please note: cheques cannot be accepted for The Culture Club payments.)

<input type="checkbox"/> I've enclosed a cheque for \$	(Payable to Ticketek NZ Ltd)	
<input type="checkbox"/> Please charge my credit card* \$	<input type="checkbox"/> VISA	<input type="checkbox"/> Mastercard/Bankcard <input type="checkbox"/> Amax
Credit card number:	Expiry date:	
Name on card:	Security number:	
Authorised signature:		

\*I do hereby acknowledge and authorize that there will be an addition of 2.55% processing fee, if paying by credit card.

☐ YES, please add me to the Festival mailing list so I can receive important information and invitations.

**STEP 7: POST OR EMAIL THIS FORM** — see *How To Book* on page 93

*We recommend you retain a copy of this form for your reference. Tickets will be posted to your nominated mailing address or you may choose to collect your tickets from the venue, which will be available from one hour prior to the show. Please note that only the legal credit card holder can collect tickets and current photo identification will be required.*

## BOOKING TICKETS

### HOW TO BOOK

**ONLINE:** festival.co.nz or ticketek.co.nz

**PHONE:** 0800 TICKETEK (0800 842 538)

**IN PERSON:** At Ticketek agencies nationwide.

**POST:** Ticketek NZ Festival bookings,  
PO Box 6334, Marion Square,  
Wellington 6141

**EMAIL:** To book your tickets by email, fill in the Festival's booking form, scan and email to [festival@ticketek.co.nz](mailto:festival@ticketek.co.nz).

**DOOR SALES:** Tickets may be purchased at the venue one hour prior to the show – provided there are still tickets available!

### BOOKING PERIODS

**SUPPORTERS OF THE CULTURE CLUB:** Preferential booking from Friday 23 October to Sunday 1 November 2015 (excluding any previously announced shows). Learn more about The Culture Club at [festival.co.nz/join](http://festival.co.nz/join).

**PUBLIC SALES:** From Monday 2 November 2015. Early Bird pricing ends on Monday 30 November.



**EARLY BIRD SALES:** Book early and save! An Early Bird price is available for most shows, giving you a discount on the top ticket price. But only until Monday 30 November.

**WRITERS WEEK:** Preferential booking period for The Culture Club supporters and multi-pass holders begins Friday 29 January 2016. Public sales open Friday 5 February 2016.

## **TICKETEK BOOKING FEES**

Ticketek booking fees apply to all ticket purchases, including door sales.

**PHONE, EMAIL AND POSTAL BOOKINGS:** \$9.25 per transaction.

**INTERNET BOOKINGS, TICKETS PRINTED AND POSTED TO YOU:** \$8.25 per transaction.

**INTERNET BOOKINGS, EZYTICKET OR MOBILE TICKETS:** \$5.25 per transaction.

**TICKETEK AGENCIES:** \$3 per ticket.

### **TICKETEK BOX OFFICES:**

\$2 per ticket (Michael Fowler Centre, St James Theatre, Wellington Railway Station and Frank Kitts Park Festival Pop-Up).

**CREDIT CARD PROCESSING FEE:** +2.55% per transaction.

**LOST TICKET CHARGE:** \$10 per transaction. Ticketek reserves the right to replace the lost tickets with either reprinted tickets or a Lost Ticket pass, which may only be collected from the venue box office one hour prior to the show (identification will be required).

## BOOKING INFORMATION

**BOOKING ONLINE?** Choose whether to get your tickets delivered straight to your smartphone via SMS with no need to print, or get your tickets delivered via email using ezyTicket and print your ticket at home.

**BOOKING MORE THAN 10 SHOWS?** Please use our personalised booking service. Phone Ticketek on (04) 384 3842.

**TICKETS DIDN'T ARRIVE?** If you haven't received your tickets within 10 days of sending your booking form, please contact Ticketek.

**CHILD PRICING:** Selected shows have special prices for children aged 15 years and under. All children must have a ticket, regardless of age.

## FESTIVAL ON THE ROAD

For events in the venues below, contact the following ticket sellers:

### **EXPRESSIONS, UPPER HUTT – TICKET DIRECT**

*Online:* [ticketdirect.co.nz](http://ticketdirect.co.nz)

*Phone:* 0800 224 224

*In person:* Expressions, 836 Fergusson Drive, Upper Hutt

### **CARTERTON EVENTS CENTRE – EVENTFINDA**

*Online:* [eventfinda.co.nz](http://eventfinda.co.nz)

*Phone:* 0800 289 849

*In person:* Carterton Events Centre, Holloway Street, Carterton iSITE  
Masterton, 10 Dixon Street,  
Masterton  
iSITE Martinborough, 18 Kitchener Street, Martinborough

## **ST MARKS CHURCH, LOWER HUTT**

Tickets to the Miyata-Yoshimura-Suzuki Trio will be available on the door and from [chambermusic.org.nz](http://chambermusic.org.nz)

## **FOR ALL OTHER EVENTS IN THE REGIONS –TICKETEK**

*Online:* [ticketek.co.nz](http://ticketek.co.nz)

*Phone:* 0800 842 538

*In person:* Waikanae New World (Lotto counter), 5 Parata Street, Waikanae

Porirua Harvey World Travel, 16 Hartham Place, Porirua

Paper Plus Lower Hutt, 228 High Street, Lower Hutt

Tickets for screenings of *Pina: A Film for Pina Bausch* in Auckland, Christchurch and New Plymouth are available at [festival.co.nz](http://festival.co.nz).

## **SEATING/PRICING**

**PREMIUM SEATING (P):** Available for selected shows. Premium seats are the very best seats in which to see the show. Premium seats are limited and sell quickly.

**A RESERVE (A):** These are the best seats in the venue (after Premium, if Premium seating applies). A Reserve seats are not sight obstructed and offer the best vantage point for seeing the show.

**B RESERVE (B):** These are the second best seats in the venue. B Reserve seats are not sight obstructed and offer a good view of the performance. (Please note: where there is no reserve lower than B Reserve, the C or D Reserve definition may apply.)

**C RESERVE (C):** A limited number of seats are available in this price category. These seats are not the best seats in the venue, and are often at the back or to the very sides of the venue.

**D RESERVE (D):** These represent the lower priced seats in the venue and may have minor sightline and/or sound issues.

**RESTRICTED VIEW (RV):** These are the lowest priced seats in the venue and will have restricted sightlines and/or sound issues.

**WHEELCHAIR SEATING:** It is essential you advise us at the time of booking if you have any special seating requirements, including wheelchair and/or companion seating. At all venues there is an allocated wheelchair area but availability is limited. All efforts are made to ensure wheelchair seating/ spaces are in the A Reserve area (and will be sold at the lowest non-restricted view price).

**SEATING REQUESTS:** If you have a particular seating request we advise you to phone through your booking and discuss your requirements with a Ticketek customer service representative

### **DISCLAIMER/ IMPORTANT INFORMATION**

Information in this programme is correct at the time of printing.

The Festival reserves the right to alter without notice any events, programmes and artists.

All ticket purchases are subject to availability, and the best available seats (in each price category) at the time of purchase will be sold.

Latecomers may be excluded from a show or admitted only at a suitable point in the performance.

Latecomers will not be entitled to a transfer or a refund.

The use of cameras or recording devices is prohibited. All cellphones and other devices that emit a sound must be either turned off or switched to silent for the duration of the performance.

Tickets are not transferable and there are no refunds or exchanges permitted, except as required under New Zealand consumer law. If a show is cancelled you will be refunded your ticket price (excluding the Ticketek service fee).

Any claims on refunds for cancelled shows must be done prior to Sunday 27 March 2016, via Ticketek.

**NEED HELP?**

Call the Festival on (04) 903 5452

# 2016 CALENDAR

94

## 2016 CALENDAR

			FEB ▶			MAR ▶				
PAGE	SHOW	VENUE	FRI 26	SAT 27	SUN 28	MON 29	TUE 1	WED 2	THU 3	FRI 4
SPECTACULAR / FAMILY										
24	FOR THE BIRDS	OTARI-WILTON'S BUSH							From 8pm	From 8pm
10	LEGRAND O'CONTINENTAL* OPENING NIGHT	CIVIC SQUARE	8.30pm							
64	THE CONTACT FESTIVAL PLAYGROUND	FRANK KITT'S PARK		2-10pm	2-10pm		2-10pm	2-10pm	2-10pm	2-10pm
THEATRE / DANCE / CIRQUE										
12	CAFÉ MÖLLER / THE RITE OF SPRING	ST JAMES THEATRE								
66	CHALK ABOUT	HANNAH PLAYHOUSE, AND ON THE ROAD*					8pm	8pm		8pm
30	ONECASTA	OPERA HOUSE								
40	COMPLEXITY OF BELONGING	ST JAMES THEATRE								
28	DEAD DOG IN A SUITCASE	OPERA HOUSE	8pm	8pm	1.30pm / 7.30pm	7pm	7pm	7pm		
34	EVERY BRILLIANT THING	HANNAH PLAYHOUSE						8pm	8pm	8pm
26	LA VERITÀ	ST JAMES THEATRE						7.30pm	7.30pm	7.30pm
37	NOT IN OUR NEIGHBOURHOOD	HANNAH PLAYHOUSE	8pm	2pm / 6pm	6pm					
38	PAGE TURNERS	UPSTAIRS AT ST JAMES THEATRE								
35	SMALL METAL OBJECTS	UNDER THE SAILS, OUTSIDE TSB ARENA								
42	SPEED OF LIGHT	ST JAMES THEATRE	7.30pm	1.30pm / 7.30pm	4pm					
32	TEPÔ	SOUNDINGS THEATRE, TE PAPA					7.30pm	7.30pm	7.30pm	7.30pm
39	THE AOR WITH HONORA LEE	CIRCA THEATRE		6.30pm	4pm		6.30pm	6.30pm	6.30pm	6.30pm
36	THE DEVIL'S HALF-AOR	HANNAH PLAYHOUSE								
38	THE GOD THAT COMES	HANNAH PLAYHOUSE								
44	THE KISS INSIDE	OPERA HOUSE								8pm
37	THE WOMAN WHO FORGOT	CENTRAL WELLINGTON						10pm / 8pm	12pm / 8pm	12pm / 8pm
66	WAVES	CIRCA THEATRE, AND ON THE ROAD*						( 7pm* )	7pm* )	
MUSIC										
18	A NIGHT WITH JAZZ AT LINCOLN CENTER ORCHESTRA	MICHAEL FOWLER CENTRE								
78	AROHIE ROAD	PĀTAKA ART + MUSEUM, PORIRUA		( 7.30pm* )						
62	BOTH SIDES NOW	SHED 6								
48	GRASS POPPERS	SHED 6							7.30pm	7.30pm
61	GALEGOO	OPERA HOUSE								
46	CONCERTO ITALIANO	MICHAEL FOWLER CENTRE		7.30pm						
55	DAME KIRITEKAWA WITH VOICES NZ CHAMBER CHOIR	MICHAEL FOWLER CENTRE								
60	DIRTBOING	MICHAEL FOWLER CENTRE			7pm					
18	JAZZ AT LINCOLN CENTER ORCHESTRA WITH THE NZSO	MICHAEL FOWLER CENTRE								
62	L'ORCHESTRE D'HOMMES - ORCHESTRES	SHED 6								
56	MIYATA-YOSHIMURA-SUZUKI TRIO	ST ANDREW'S ON THE TERRACE, AND ON THE ROAD*			3pm	( 7.30pm* )				
63	MODERN MĀORI QUARTET	SHED 6, AND ON THE ROAD*								
52	NO MAN'S LAND	MICHAEL FOWLER CENTRE						7.30pm		
54	REIMAGINING THE CLASSICS	MICHAEL FOWLER CENTRE								
51	RELICT FURIES	WELLINGTON CATHEDRAL OF ST PAUL								
57	SILA: THE BREATH OF THE WORLD	CIVIC SQUARE								
63	SORCERERS	SHED 6								
22	SUFJAN STEVENS	MICHAEL FOWLER CENTRE								
58	THE HILLS	SHED 6								
61	THE PHOENIX FOUNDATION	SHED 6								
58	THE VERLAINES	SHED 6								
67-71 WRITERS WEEK - HIGHLIGHTS										
68	HENRY MARSH	MICHAEL FOWLER CENTRE								
69	HIGH TEA: THE ROGER HALL ROAST	HIPPOPOTAMUS RESTAURANT, OT MUSEUM HOTEL								
67	MIRANDA JULY: LOST CHILD	OPERA HOUSE								
79	ROBERT DODGSON ON DND GLYTON	THE DOWSE, LOWER HUTT*								
73-77 VISUAL ARTS - HIGHLIGHTS										
75	RIVER OF FUNDAMENT	EMBASSY THEATRE								
80 ARTIST TALKS - HIGHLIGHTS										
80	DANCING FOR YOUR LIFE	ST JAMES THEATRE								

### HOW TO BOOK

(See full details page 92)

### ONLINE

FESTIVAL.CO.NZ

### PHONE

0800 TICKETEK (842 53 8)

### IN PERSON

TICKETEK AGENCIES NATIONWIDE

# 2016 CALENDAR

## 2016 CALENDAR

95

SAT 5	SUN 6	MON 7	TUE 8	WED 9	THU 10	FRI 11	SAT 12	SUN 13	MON 14	TUE 15	WED 16	THU 17	FRI 18	SAT 19	SUN 20
From 8pm	From 8pm		From 8pm	From 8pm	From 8pm	From 8pm	From 8pm	From 8pm		From 8pm	From 8pm	From 8pm	From 8pm	From 8pm	
2-10pm	2-10pm		2-10pm	2-10pm	2-10pm	2-10pm	2-10pm	2-10pm		2-10pm	2-10pm	2-10pm	2-10pm	2-10pm	
												7.30pm	7.30pm	7.30pm	6.30pm
9pm	9pm		(7pm*)	7pm*	7pm*)							7.30pm	7.30pm	7.30pm	6.30pm
					8pm	8pm	8pm	8pm		8pm	8pm				
						7.30pm	7.30pm	1.30pm / 7.30pm							
4pm / 8pm 1.30pm / 7.30pm	6pm	6pm													
	11am / 1pm / 3pm														
											5.30pm	12.30pm / 5.30pm	12.30pm / 5.30pm	12.30pm / 5.30pm	
1.30pm / 7.30pm 6.30pm	4pm		6.30pm	6.30pm	6.30pm	6.30pm	6.30pm	4pm		6.30pm	6.30pm	6.30pm	6.30pm	6.30pm	4pm
				7pm	7pm	7pm	7pm	7pm							
8pm 12pm / 8pm 2pm / 7pm	12pm / 8pm		12pm / 8pm	12pm / 8pm										8pm	8pm
							7.30pm								
						8pm	8pm	8pm							
7.30pm	7.30pm													8pm	
								8pm							
					7.30pm	7.30pm									
												8pm	8pm	8pm	
											8pm		(7pm*)	7pm*	8pm*)
															5pm
5pm	3pm									7pm					
	8pm	8pm								8pm					
			8pm												
				8pm	8pm										
			8pm					3pm							
				8pm											
							(7pm*)								
														8pm	
													1pm		

JOIN THE CONVERSATION

# NZFESTIVAL #KICKUPHEARTS

(\*) Festival On The Road (see page 70)

## MAP AND VENUE INFORMATION

# MAP AND VENUE INFORMATION

### FESTIVAL VENUES

- 1 Academy Galleries
- 2 Adam Art Gallery
- 3 BATS Theatre
- 4 Circa Theatre
- 5 City Gallery
- 6 Civic Square
- 7 Embassy Theatre
- 8 Frank Kitts Park

- 9 Hannah Playhouse
- 10 Michael Fowler Centre
- 11 QT Museum Hotel
- 12 New Zealand Portrait Gallery (Shed 11)
- 13 Opera House
- 14 Shed 6
- 15 St Andrew's on The Terrace

- 16 St James Theatre/Festival Bar
- 17 To Papa/Soundings Theatre
- 18 TSB Bank Arena
- 19 Wellington Cathedral of St Paul
- 20 Wellington Museum
- 21 Wellington Railway Station

### TICKET OUTLETS

- 8 Ticketek: Frank Kitts Park
- 10 Ticketek: Michael Fowler Centre
- 21 Ticketek: Wellington Railway Station
- 16 Ticketek: St James Theatre
- 7 Embassy Theatre (Writers Week only)

- Primeparking location
- Parking
- Tourist information
- Taxi rank

### VENUE TIPS

- Arrive early, as most venues won't be able to seat late-comers and you will not be entitled to a refund or transfer.
- The Box Office will usually be open one hour before the show for last-minute ticket sales and ticket collection.
- If collecting tickets, be there at least 20-30 minutes before the performance starts.
- A venue will generally open for seating 30 minutes prior to the start of the show.
- Remember to switch off your mobile phone prior to the start of the show.
- Recording or photography during the performance is not permitted.

*From outside Wellington?*  
For travel, accommodation and tourist information, visit [festival.co.nz/info](http://festival.co.nz/info) or [wellingtonnz.com](http://wellingtonnz.com)

Wellington Combined Taxis  
(04) 384 4444

### FESTIVAL PARTNER



Preferred parking supplier  
[primeproperty.co.nz](http://primeproperty.co.nz)





# SHAPESHIFTER SCULPTURE 2016

26 Feb —  
20 Mar 2016

Civic Gardens  
Lower Hutt

[shapeshifter.org.nz](http://shapeshifter.org.nz)







# THE ROYAL EDINBURGH MILITARY TATTOO



## INCLUDING PERFORMANCES FROM

Top Secret (Switzerland) | Royal Marine Band | Royal Air Force Band | Welsh Guards Army Band  
The Republic of Fiji Military Forces Band | HM The King of Norway's Guards Band and Drill Team  
New Zealand Army Band | Auckland Police Pipe Band | Lochiel Marching Drill Team | More to be announced...

**Thursday Selling Fast**  
**Friday Sold Out**  
**Saturday Sold Out**  
**Sunday Selling Fast**

**WESTPAC STADIUM  
WELLINGTON**

Book now at [festival.co.nz](http://festival.co.nz)

**18 – 21 FEB 2016**

Presented by  
**NEW ZEALAND  
FESTIVAL**

Supported by  
**Absolutely Positively  
Wellington City Council**  
Ms Helen Stammers