

NEW ZEALAND
FESTIVAL 

FESTIVAL.CO.NZ



KICK UP THE ARTS!

NEW ZEALAND FESTIVAL 2016

26 FEB - 20 MAR 2016

NEW ZEALAND
FESTIVAL 

FESTIVAL.CO.NZ



KICK UP THE ARTS!

NEW ZEALAND FESTIVAL 2016

26 FEB - 20 MAR 2016

CONTENTS

It's the New Zealand Festival's 30th birthday and have we got a line-up for you. Come kick up the arts with us as we present the boldest and bravest artists from Aotearoa and around the world.



FAMILY

Le Grand Continental® Opening Night, partnered by Kiwibank	10
◀ The Wellington Airport Season of For the Birds	24
The ACB with Honora Lee	39
The Contact Festival Playground, including Arquitectura de Feria & Fly Me Up to Where You Are New Zealand	64
Waves	66
Chalk About	66

THEATRE

The Todd Corporation Season of Tanztheater Wuppertal Pina Bausch	12
◀ La Verità	26
Dead Dog in a Suitcase	28
Cineastas	30
Te Pō	32
Every Brilliant Thing	34
small metal objects	35
The Devil's Half-Acre	36
Not in Our Neighbourhood	37
The Woman Who Forgot	37
The God that Comes	38
Page Turners	38
The ACB with Honora Lee	39
Complexity of Belonging	40
Waves	66
Chalk About	66

DANCE

Le Grand Continental® Opening Night, partnered by Kiwibank	10
◀ The Todd Corporation Season of Tanztheater Wuppertal Pina Bausch	12
La Verità	26
Complexity of Belonging	40
Speed of Light	42
The Kiss Inside	44



MUSIC

◀ Jazz at Lincoln Center Orchestra with Wynton Marsalis, partnered by Weta Digital	18
Sufjan Stevens	22
Dead Dog in a Suitcase	28
The God that Comes	38
Concerto Italiano	46
Brass Poppies	48
Relict Furies	51
No Man's Land	52
Reimagining the Classics with Uri Caine	54
Dame Kiri Te Kanawa	55
Miyata-Yoshimura-Suzuki Trio	56
Sila: The Breath of the World	57
The Chills & The Verlaines	58
dirtsong with Archie Roach & Paul Kelly	60
Calexico	61
The Phoenix Foundation	61
L'orchestre d'hommes-orchestres	
Performs Tom Waits	62
Both Sides Now with Julia Deans	62
Sorceress	63
The Modern Māori Quartet	63



WRITERS WEEK

◀ Miranda July	67
Henry Marsh & other writers	68-71



VISUAL ARTS

The Wellington Airport Season of For the Birds	24
Fly Me Up to Where You Are New Zealand	64
◀ River of Fundament & exhibitions	73-77

MAKE SURE YOU READ THESE TOO

Pōwhiri	9
On The Road	78
Artist Talks	80
Festival Awards & SchoolFest	81
Access information & Tix for \$20	91
Booking	92
Calendar	94
Map & venue information	96

FESTIVAL PARTNERS

CREATIVE PARTNERS

LEADER



ACTIVATOR



SUPPORTERS

Assignment:

sputnik.

Stem
content creators

DOT loves data



Venue Partner

INTERNATIONAL PARTNERS

Asia New Zealand Foundation
Australia Council for the Arts
Australian High Commission
British Council
British High Commission
Canada Council for the Arts
Creative Scotland
Culture Ireland
Embassy of Argentina
Embassy of France
Embassy of Spain
Embassy of the Republic of Poland
Embassy of the United States of America
Goethe-Institut
New Zealand-France Friendship Fund

CORPORATE PATRONS

Air New Zealand
BERL
Building Solutions
Caffe L'affare
Craigs Investment Partners
Deloitte
JacksonStone and Partners
Leuthart + Co
Primeproperty Group

GRANTS

Carterton District Council
Four Winds Foundation
Greytown Trust Lands
Health Quality & Safety Commission
Hutt City Council
Infinity Foundation
Kāpiti Coast District Council
Mana Community Grants Foundation

Masterton District Council
Lands Trust Masterton
Ōtaki Community Board
Performing Arts Foundation of Wellington
Porirua City Council
Royal Society of New Zealand
Trust House Community Enterprise
Upper Hutt City Council

PATRONS

PLATINUM
Geoff and Vivien Atkinson
Mary and Peter Biggs CNZM
Helena and James Brow
MR Camp and AE Gaskell
Sir Roderick and Gillian, Lady Deane
Peter and Carolyn Diessl
David Goddard and Liesle Theron
Chris and Kathy Parkin

ENGAGEMENT PARTNERS

LEADER



ACTIVATOR



SUPPORTERS



SUNDAY STAR★TIMES

Richard Stone and Dennis Roberts
Roy and Renate Savage
Teena, Lady Todd
The Wallace Foundation
Gael Webster and Tim Brown

GOLD

Denis and Verna Adam
John and Jackie Archibald
Paul and Sheryl Baines
Dennis and Valerie Barnes
Kaye and Maurice Clark
M. Doucas
Sir David Gascoigne and Dame Patsy Reddy
John Luxton and Mary Scholtens
Adam and Kate Thornton

SILVER

John Allen and Janie Pack
Ian Cassels and Caitlin Taylor
Stephen Kós and Jocelyn Afford

EXPERIENCE PARTNERS

LEADER



ACTIVATORS

MinterEllison
RuddWatts



SUPPORTERS



Rex Nicholls and Kerry Prendergast
van der Boyes Family Trust
Paul Ridley-Smith and Felicity Wong

BRONZE

Pip and Peter Bennett
Colin and Nalini Baruch
Peter Chemis and Jane McDiarmid
Dinah and Robert Dobson
Matthew Dravitzki
Cathy Ferguson and Michiel During
Patricia Fitzgerald
Ruth and Peter Graham
Heather Hayden and Tony White
Timberly Hughes and Allan Ransley
Jane Kominik
Adie and Matthew McClelland
Chris and John McGrath
Ross and Treena Martin

INNOVATION PARTNERS

LEADER



ACTIVATOR



SUPPORTERS



Richard T Nelson
Mark O'Regan and Nicola Saker
Fay Paterson and Brett Gawn
Mike and Mazz Scannell
Gordon and Marie Shroff
Celia and Ashley Smout
Elisabeth Welson and David Langman
Leona Wilson

PATRON

Malcolm and Ginny Abernethy
James and Louise Aitken
Lady Norma Beattie
Margie Beattie and John Barlow
Virginia Breen
Errol and Jennifer Clark
Al and VP Diem
Alison Franks and John Bristed
Ian and Jocelyn Fraser
Rhona Fraser and Campbell McLachlan
Marion and Paul Frater
Susan Freeman-Greene

Michael and Kristin Gibson
Sharon and Tom Greally
Jane and Michael Hall
Carole A Hicks
Prof Les Holborow
Carolyn Hooper and Terry Friel
Tomas and Jan Huppert
Howard Greive and Gabrielle McKone
Susan and Nigel Isaacs
Mary Marshall
Jane Meares and Denis Clifford
Rachel Metson and Paul Foley
Renata Minetto
Bronwyn Monopoli
Rob Nicoll
Sue Paterson
Hilary Patton and Shirley Gainsford
Sam Perry and Iona Anderson
Joe and Jackie Pope
Michael and Lynda Potts
Elizabeth Purves
Laraine and Peter Rothenberg

John and Rachel Ryan
Margaret and Roger Sainty
Judy Salmond
Cathy Scott
Conrad Shanly
Jill Shepherd
Ross Steele
Tim Stephens and Sarah Bartlett
Dr and Mrs W S Taylor
Ruth and Simon Treacy
Phillipa Ulrich and Denis Lander
Mark and Sally Verbiest
Celia Wade-Brown
Janet Waite
Margaret Wallace
Carla and John Wild
Meg Williams and Olly Bisson
Jane Wright

Anonymous (20)

CORE PARTNER

Absolutely Positively
Wellington City Council
Me Heke Kī Pōneke

CORE FUNDER



MAJOR GRANTS



ACCESSIBILITY PARTNERS



NEW ZEALAND FESTIVAL 

THE CULTURE CLUB

WE BELIEVE ART MAKES LIFE **BETTER**. IT CAN
BRIGHTEN OUR DAYS, BRING US **TOGETHER**
AND CHANGE OUR LIVES. IF YOU BELIEVE THIS TOO, **JOIN US**

BEST SEATS

The Culture Club Pre-sale for
New Zealand Festival and other events.

EXCLUSIVE EVENTS

Access to interesting events for
interested people, year-round.

ARTY CONTENT

Made just for you, straight
to your inbox.

Join The Culture Club from
just \$5 per month or \$60 a
year and we'll thank you for
your kind donation with
these great supporter perks.

Sign up online at festival.co.nz/join or on the Booking Form on page 92.

  **CULTURECLUBNZ** #UPYOURARTS **FESTIVAL.CO.NZ**


ARTS COUNCIL OF NEW ZEALAND TOI AOTEAROA

Supporting New Zealand arts

Creative New Zealand is proud to support the development of New Zealand's
outstanding artistic talent at the 2016 New Zealand Festival

ARTS COUNCIL OF NEW ZEALAND TOI AOTEAROA

Creative New Zealand is the national arts development agency, developing, investing in and advocating for the arts
www.creativenz.govt.nz | info@creativenz.govt.nz

Image: *The Devil's Half Acre*, by Trick of the Light Productions. Photo: Tom Hoyle.

HOW TO GET THE MOST
OUT OF YOUR FESTIVALDATES FOR
YOUR DIARY**THE CULTURE CLUB PRE-SALE**

FRI 23 OCT – SUN 1 NOV 2015

Join The Culture Club at
festival.co.nz/join or page 92

EARLY BIRD TICKETS AVAILABLE

FRI 23 OCT – MON 30 NOV 2015
FOR CULTURE CLUB SUPPORTERS

MON 2 NOV – MON 30 NOV 2015
FOR GENERAL PUBLIC

PUBLIC SALES

MON 2 NOV 2015

ROYAL EDINBURGH MILITARY TATTOO

THU 18 – SUN 21 FEB 2016

NEW ZEALAND FESTIVAL

FRI 26 FEB – SUN 20 MAR 2016

WRITERS WEEK

TUE 8 – SUN 13 MAR 2016

EARLY BIRD
TICKETS**NEW FOR 2016!**

If you book before 30 November, you'll get
access to Early Bird prices on the
best seats.

Early Bird prices are marked throughout this
brochure like this: **EARLY BIRD A\$59**

Early Bird tickets are limited, so get in quick
to enjoy the best prices.

Find out more about how to book on page 93.

TOP 10 FESTIVAL TIPS

1. WANT MORE?

Go online to festival.co.nz. There's video galore and lots more content.

2. ENTERTAINING THE KIDS?

Check out *For the Birds* (page 24) and our Family section (page 64).

3. NO CASH?

No problem. Look out for the **FREE** icon and you won't pay a cent.

4. OUT IN THE REGIONS?

Check out our touring shows in Festival On The Road (page 78).

5. NEED TO LIVE UP YOUR LUNCH BREAK?

Enjoy free Artist Talks, 1pm Upstairs at the St James Theatre (page 80).

6. MAKING A WEEKEND OF IT?

Go to our handy calendar to plan your Festival (page 94).

7. LOST?

There's a map to help you find your way (page 96).

8. LOOKING FOR A SUNDOWNER?

Come grab a drink with us at the Festival Bar (see below).

9. WANT THE INSIDE WORD?

Sign up to our enews for deals and more at festival.co.nz.

10. LOVE FUN?

Us too. So let's get together and kick up the arts!

FESTIVAL BAR

MOJO AT THE ST JAMES THEATRE

Come down in the daytime for coffee, or head over after your Festival
show for drinks and post-show hangouts. Open late most nights during
the Festival, the Bar is in the new boutique Mojo café at the St James
Theatre on Courtenay Place. Natter the night away to a live soundtrack
provided by some of Wellington's finest local musicians.
Visit festival.co.nz for opening times.

Tēnā koutou tēnā koutou tēnā tātou katoa. Art is one of the most powerful aspects to being human. Our ability to communicate through language, movement, music or imagery gives us the unique quality of an imaginative realm. It is in this realm we create the stories that drive our lives, our loves and our connections to each other – our humanness.

SHELAGH MAGADZA ▶

Artistic Director

Festivals are a great time to immerse yourself in the work of great artists and perhaps to learn vital truths about yourself reflected in their stories. As we look back on 30 years of this Festival, there is no doubt it has enriched the life of Wellington and New Zealand. It has been a portal through which people have experienced some of the world's leading artists and thinkers. It has been a place in which people from different cultures have connected. And it has been a place in

which we have explored our evolving sense of identity.

I've certainly seen my own life transformed through a 25-year association with this Festival and feel privileged to have been afforded moments of sublime revelation and joy – I still vividly remember sitting in Robert Lepage and Ex Machina's *Seven Streams of the River Ota* in 1998, transfixed by the masterful storytelling and profound observations on the nature of people.

Hundreds of thousands of acts of faith, generosity, joy and risk-taking have brought the Festival on this 30-year journey and it is testament to the artists, audiences, partners and staff who have all played a part. It is now our challenge to take this into the future and to inspire the next generations of artists and audiences. To ensure that the role of the arts in our society remains a compelling fact.

This year's programme includes some artists and companies who have been audience favourites in past years, as well as fresh and bold works from artists who have not been to New Zealand before.

Please take the time to explore as much as you can – you will be richly rewarded. And as Samuel Beckett said, "Dance first. Think later. It's the natural order."

WELCOME!

IMAGES: JEFF MCEWAN

FESTIVAL TURNS 30

Share your memories at [NZFestival](#)



KERRY PRENDERGAST

Executive Chair

A Festival highlight for me from the past 30 years was *Sutra*, a wonderful collaboration by choreographer Sidi Larbi Cherkaoui and Turner Prize-winning artist Antony Gormley. Featuring Buddhist monks from the original Shaolin Temple in China, and a set comprised of 21 wooden boxes, it exuded a sublime calm.



SUE PATERSON

Executive Director

A memorable highlight from the 1996 Festival was one of Europe's most distinguished musical ensembles, Jordi Savall's Hespèrion XX, who are renowned for Spanish and Italian music prior to 1800. Wellington Town Hall resonated with glorious music and song as they performed masterpieces from a golden age on authentic, period instruments.



PŌWHIRI

Nau mai haere mai ki te
Taurima o Aotearoa

Welcome to the New Zealand Festival

Kei ngā kaiwaiata,
ngā kaiwhakaari ngā kaikanikani
me ngā kaimātakitaki
Whakatau mai rā

To the artists and to our audiences
We greet you



Join us for an early morning pōwhiri to welcome international and local artists to Te Taurima o Aotearoa/ New Zealand Festival, in this, our 30th anniversary year.

Look out over the splendour of the harbour as we celebrate Aotearoa's unique culture and the coming together of artists and audiences from all over the world.

FREE

WHEN

FRI 26 FEB,
7.30AM

WHERE

TE WHAREWAKA, ODLIN'S PLAZA,
WELLINGTON WATERFRONT

**Wellington
City Council,
proud partner
of the New
Zealand Festival
for 30 years**

Contact Festival Playground

Sat 27 February – Sun 20 March
(except Mondays)

Frank Kitts Park

Freeeeeeeeeee
See page 64

Contact

Hold on to your toilet seats!

We're totally over-excited to bring the magic of a people powered playground to the Welly waterfront, for the New Zealand Festival.

All the way from Spain, fantastical rides and actors will whisk you and your family into a quirky, recycled world of wonder.

So come and play!

Our Arts and Culture Fund supported Strike with their Battery 100 project bringing together and training local drummers for The Big Bang.
Image: Wellington NZ.com.



**Absolutely Positively
Wellington City Council**
Me Heke Ki Pōneke

PARTNERED BY KIWIBANK

LE GRAND CONTINENTAL®

A CHOREOGRAPHY BY SYLVAIN ÉMARD
SYLVAIN ÉMARD DANSE

(Canada)

"IT'S LIKE
SNOWFLAKES
OUT HERE –
WE'RE ALL
DIFFERENT,
BUT WE COME
TOGETHER
INTO ONE BIG
HAPPY FAMILY"

BRAD FAUBION,

DANCER IN PORTLAND

FREE

SPECTACULAR

DANCE

FAMILY

WHEN

FRI 26 FEB, 8.30PM

WHERE

CIVIC SQUARE

DURATION

30MINS WITH DANCE
PARTY TO FOLLOW

PARTNERED BY

Kiwi
bank.

WITH SUPPORT FROM

WELLINGTON
AMENITIES FUND

A Sylvain Émard Danse and
Festival TransAmériques
co-production.

When is a crowd a
work of art? When
you make everyone in
it feel like dancing.

Events like 2014's *The Big Bang* have given the Festival a reputation for putting on the best opening night parties, and 2016 is going to be no exception, with a 30-minute dance spectacular created by French-Canadian choreographer Sylvain Émard and performed by volunteers from the Wellington region.

Inspired by line dancing and contemporary dance, *Le Grand Continental*® is a mass dance performance. This unforgettable experience has been to cities around Canada and the US, and in Mexico and South Korea, and to bring it to Civic Square we've hand-picked 150 amateur dancers aged between 10 and 75 who've been trained by Sylvain until they can bust a move like the best of them.

After the official performance, the whole crowd will be asked to join in for a giant freestyle dance party with music from Chocolate Box Deluxe.

You dancing?

Because we're asking.

YOU'LL ALSO LIKE

For the Birds, p24

Speed of Light, p42

IMAGE: ROBERT TORRES

TANZTHEATER WUPPERTAL

PINA BAUSCH

**“No one had a greater
influence on postwar
European dance”**

THE GUARDIAN

Celebrate the art of
the great German
choreographer
Pina Bausch in this
special season.



PINA BAUSCH

(1940 — 2009)



“HER WORK HAS THE SCALE OF GRAND OPERA AND THE DREAM-QUALITY OF FELLINI’S FILMS”

THE INDEPENDENT

➤ YOU’LL ALSO LIKE

Speed of Light, p42
Douglas Wright’s
The Kiss Inside, p44

“IN 40 MINUTES [OF CAFÉ MÜLLER], PINA SHOWED ME MORE ABOUT MEN AND WOMEN THAN THE HISTORY OF CINEMA, WITHOUT A SINGLE WORD”

WIM WENDERS

Madonna and David Bowie are fans, and so is St Vincent. Actor Alan Rickman said she “pins you to your seat. It’s like she’s connected to your bloodstream or something”. Sculptor Antony Gormley called her “an inspiration to me for the last 20 years”.

Pina Bausch was the “high priestess of dance theatre” (*The Guardian*), with such a loyal following that, when a retrospective of her work was performed as part of the London 2012 Festival ahead of the Olympic Games, there were fans raiding their bank accounts and clearing their diaries for the nearly 30 hours needed to see all 10 shows.

Now, for the first time, as part of a season that also includes Wim Wenders’ award-winning *Pina* documentary, you can experience her work live on stage in New Zealand – and discover for yourself why it inspires such devotion.

Tanztheater Wuppertal Pina Bausch, the company Bausch led until her death in 2009, will be performing two of her signature creations, *Café Müller* (1978) and *The Rite of Spring* (1975), each full of emotion and intensity that aims straight for the heart.

IMAGES (FROM LEFT): WILFRIED KRÜGER/JOCHEN VIEHOFF/ULLI WEISS

THE TODD CORPORATION SEASON OF

CAFÉ MÜLLER/ THE RITE OF SPRING

TANZTHEATER WUPPERTAL PINA BAUSCH

(Germany)



Set to the music of Henry Purcell, the first half of this “astonishing pairing” (*The Guardian*) is *Café Müller*, a take on Bausch’s recurring theme of strained relationships that is quieter and more intimate than the work that follows. It was inspired by memories of the café her parents owned when she was a child, and excerpts from it featured in Pedro Almodóvar’s 2002 film *Talk to Her*, which you can also see as part of the Festival’s Bausch season.

According to choreographer Matthew Bourne, the second half of this pairing is “the only true masterpiece” ever set to Stravinsky’s 1913 *The Rite of Spring* ballet score. In Bausch’s hands, the music soundtracks a spectacular study in primitivism, with the sexes confronting each other on a stage covered in soil and the 29 dancers streaked with sweat and dirt by the end of their performance.

Presented in memory of Sir John Todd, dance lover and Festival Patron (1927 — 2015).



DANCE

THEATRE

WHEN

THU 17 — SAT 19 MAR,
 7.30PM
 SUN 20 MAR, 6.30PM

WHERE

ST JAMES THEATRE

TICKETS

EARLY BIRD P\$139
 P\$149, A\$109, B\$79

DURATION

1HR 45MINS
 (INC 20MIN INTERVAL)

ARTIST TALK

FRI 18 MAR, SEE P80

PARTNERED BY



IN COOPERATION WITH



IN ASSOCIATION WITH



PINA: A FILM FOR PINA BAUSCH

Director: **WIM WENDERS**

Germany | 2011 | 1hr 43mins | PG | with subtitles

There aren’t many great works of art about great artists. High on the list is Wim Wenders’ documentary *Pina: A Film for Pina Bausch*, which we are screening at selected cinemas around the country in November 2015 to whet your appetite for our 2016 Bausch season.

With camerawork “as sublime as the performances” (*Time Out*), the legendary German film-maker will take you on a sensual, visually stunning journey of discovery onto the stage with the Tanztheater Wuppertal Pina Bausch company. You will also venture out of the theatre for performances in the city and surrounding areas of Wuppertal – the place that for 35 years was the home and centre for Bausch’s creativity.

Four of Bausch’s dance works, including *Café Müller* and *The Rite of Spring*, are at the fore of the film, intercut with company interviews and archive footage of this pioneer of modern dance.

Pina screenings courtesy of Entertainment One.

FILM

DANCE

WELLINGTON

WHEN: TUE 10 NOV, 6.30PM

WHERE: EMBASSY THEATRE (3D)

TICKETS: \$19
(PLUS \$1 FOR 3D GLASSES)

AUCKLAND

WHEN: THU 19 NOV, 6.45PM

WHERE: RIALTO CINEMAS,
NEWMARKET (3D)

TICKETS: \$19
(PLUS \$1 FOR 3D GLASSES)

“A MEMORIAL THAT
IS ALSO A DEFIANCE
OF MORTALITY –
COMPLETELY ALIVE IN
EVERY DIMENSION”

THE NEW YORK TIMES



NEW PLYMOUTH

WHEN: WED 25 NOV, 7.30PM

WHERE: LEN LYE CENTRE
CINEMA (2D)

TICKETS: \$17

CHRISTCHURCH

WHEN: SUN 29 NOV, 7.45PM

WHERE: ACADEMY GOLD
CINEMA (2D)

TICKETS: \$17

DANCING DREAMS: IN THE FOOTSTEPS OF PINA BAUSCH

Directors: **RAINER HOFFMANN
AND ANNE LINSEL**

Germany | 2010 | 1hr 30mins | PG | with subtitles

Many of the teenagers chosen to learn one of Pina Bausch’s dance pieces in *Dancing Dreams* had never heard of her. One admits he decided to take part after watching the film *Billy Elliot*. A delightful study of amateurs giving their all under pressure, the documentary follows 40 students from high schools across Wuppertal over a 10-month period as they prepare for a public performance. It was filmed shortly before Bausch’s death and includes her final interview.



WHEN: SUN 28 FEB, 11AM AND 2PM

WHERE: CITY GALLERY WELLINGTON

FILM

DANCE

FREE

AND THE SHIP SAILS ON

Director: **FEDERICO FELLINI**

Italy | 1983 | 2hrs 8mins | PG | with subtitles

Pina Bausch’s filmography extends beyond dance documentaries to roles in dramatic features by two major directors. In *And the Ship Sails On*, she’s one of a number of passengers on a luxury liner shortly before the start of World War I. From its bravura opening sequence, in which sepia-tinted silent movie footage slowly acquires colour and sound, the film is a fantastical, unpredictable tour de force – “a bold testament to the artifice of studio-made movies ... a succession of mostly comic commentaries on art and artists, whose self-absorption Mr Fellini finds both wickedly funny and very moving” (*The New York Times*).



FILM

WHEN: SUN 6 MAR, 11AM AND 2PM

WHERE: CITY GALLERY WELLINGTON

DANCE

FREE



WHEN: SUN 13 MAR, 11AM AND 2PM

WHERE: CITY GALLERY WELLINGTON

FILM

DANCE

FREE

TALK TO HER

Director: **PEDRO ALMODÓVAR**

Spain | 2002 | 1hr 52mins | R13 | with subtitles

Pina Bausch appears as herself in the opening scene of *Talk To Her*, performing in *Café Müller* while two strangers meet in the audience. Each of these strangers will become a caregiver for a woman trapped in a coma, and if this sounds a restrained premise for a drama, count on Almodóvar to prove otherwise. Obsession, moral jeopardy, soulful comedy and sexual transgression: restraint is not this director’s thing at all. *Talk to Her* “combines improbable melodrama (gored bullfighters, comatose ballerinas) with subtly kinky bedside vigils and sensational denouements, and yet at the end, we are undeniably touched” (Roger Ebert).

NEW ZEALAND FESTIVAL AND WETA DIGITAL PRESENT

JAZZ AT LINCOLN CENTER ORCHESTRA WITH WYNTON MARSALIS RESIDENCY

(United States)

It's swing time. Jazz doesn't get any better than the Jazz at Lincoln Center Orchestra with Wynton Marsalis. They're the gold standard — 15 of the finest jazz soloists and ensemble players in the world. And for this Festival residency Wellington gets them all to itself.

The JLCO is the Orchestra of the Jazz at Lincoln Center organisation in New York, whose mission is to entertain, enrich and expand a global community for jazz through performance, education and advocacy.

Marsalis — a jazz powerhouse and one of the world's great trumpeters — leads the Orchestra and is the organisation's managing and artistic director.

He first appeared at the New Zealand Festival with his quintet in 1988, then again in 2000 leading the JLCO.

Now we've invited him and the Orchestra back for an extended stay to help us celebrate our 30th birthday with three concerts (including two with the New Zealand Symphony Orchestra), a special performance for young people and masterclasses with the New Zealand School of Music.

For Marsalis, "musicality and sociability are always linked" (*The Daily Telegraph*), making him and the Jazz at Lincoln Center Orchestra ideal Festival guests. Help us welcome them.



MUSIC

PARTNERED BY

weta
DIGITAL

WITH SUPPORT FROM



IMAGE: JOE MARTINEZ

**"THE GREATEST JAZZ ENSEMBLE
WORKING TODAY"**

CHICAGO TRIBUNE

7 YOU'LL ALSO LIKE

Uri Caine with the
New Zealand
String Quartet, p54
dirtsong, p60

SWING SYMPHONY NO 3

BY WYNTON MARSALIS

JAZZ AT LINCOLN CENTER ORCHESTRA WITH NEW ZEALAND SYMPHONY ORCHESTRA



“Jazz is not merely music, jazz is America,” Wynton Marsalis has said. At the centre of this concert of orchestral pieces is his third symphony, which takes you on a journey through American jazz history. Commissioned by the Berliner Philharmoniker, the New York Philharmonic, the Los Angeles Philharmonic and London’s Barbican Centre, *Swing Symphony* is a “stunning achievement” (*The Arts Desk*) that

traverses the first half of the 20th century from ragtime, through the big band era, to bebop and beyond. With the NZSO conducted by Matthew Coorey, the other pieces in this all-American programme are Aaron Copland's *Appalachian Spring* and Leonard Bernstein's *West Side Story Dances*. Feel the force when these world-class orchestras come together for two nights of glorious music.

WHEN

THU 10 – FRI 11 MAR, 7.30PM

WHERE

MICHAEL FOWLER CENTRE

TICKETS

EARLY BIRD P\$119
P\$129, A\$99, B\$79, C\$59, D\$39

DURATION

2HRS
(INC INTERVAL)

JAZZ FOR YOUNG PEOPLE

WHEN: FRI 11 MAR, 11AM

WHERE: MICHAEL FOWLER CENTRE

TICKETS: \$18 FOR SCHOOLFEST STUDENTS ONLY (SEE P81)

Kiwi students will be introduced to the infectious energy of swing at this concert as part of our SchoolFest education programme.

Jazz at Lincoln Center’s Jazz for Young People concerts are renowned for their success in spreading the gospel of jazz by illuminating the music and its development. During this concert, full of warmth and humour, the Orchestra won’t just play, but will also discuss the music, aiming their commentary “at young listeners unfamiliar with jazz, as well as those already smitten” (*Chicago Tribune*).

To book, and for further details, see our SchoolFest brochure, now available. You can read more about SchoolFest on p81.

A NIGHT WITH JAZZ AT LINCOLN CENTER ORCHESTRA



The Jazz at Lincoln Center’s resident orchestra since 1988, the JLCO has a vast repertoire at its fingertips. From rare historic compositions to their own commissions, it takes in most of the jazz greats, including Duke Ellington, Count Basie, Mary Lou Williams, Charles Mingus, Chick Corea and many others – not least Wynton Marsalis himself.

New Yorkers have the JLCO on their doorstep, but for the rest of us it’s a rare and precious opportunity. Seize it.

WHEN

SAT 12 MAR, 7.30PM

WHERE

MICHAEL FOWLER CENTRE

TICKETS

EARLY BIRD P\$89
P\$99, A\$79, B\$59, C\$49, D\$39

During this Wellington residency, as part of their commitment to jazz education, Wynton Marsalis and other musicians from the Jazz at Lincoln Center Orchestra will be giving guidance to students from the New Zealand School of Music jazz programme in a day of masterclasses.

A Marsalis masterclass might include “history, humour, politics, observation, music theory, philosophy, analogies, admonitions and affirmations” (*The Times-Picayune*) – all peppered with personal anecdotes. We thank Marsalis and the Jazz at Lincoln Center Orchestra for giving the students this unique experience.

NEW ZEALAND SCHOOL OF MUSIC MASTERCLASSES

SUFJAN STEVENS

(United States)

Grief is
“transformed
into something
brimming with life”
(*The Quietus*) in
this concert based
around Sufjan
Stevens’ latest
album, *Carrie
& Lowell*.

“AN ARTIST
TOWERING
ABOVE MOST
OF HIS PEERS”

FINANCIAL TIMES

One of the most admired musicians of the last decade, Stevens ascended even greater creative heights in 2015, with *Carrie & Lowell* — inspired by the death of his mother — widely declared his most impressive achievement yet and among the year’s best albums. Similar praise was heaped upon the gigs *The Guardian* called “truly spectacular”, where he performed the album in full.

Experience Stevens and his band’s “radiant rendering” (*The Irish Times*) of *Carrie & Lowell*, with its “masterful and carefully shorn” lyrics and music (*Pitchfork*), along with a selection of other songs from across his remarkable career.



IMAGE: KYLE GUSTAFSON, KYLEGUSTAFSON.COM

MUSIC

WHEN

SUN 6 — MON 7 MAR,
8PM

WHERE

MICHAEL FOWLER
CENTRE

TICKETS

EARLY BIRD A\$79
A\$89, B\$69, C\$59

PARTNERED BY



WITH SUPPORT FROM



YOU'LL
ALSO LIKE

*The God that
Comes*, p38

Both Sides Now, p62

"BEAUTIFUL, UNEXPECTED
AND ALIVE!"

THE ROYAL SOCIETY FOR THE
PROTECTION OF BIRDS (UK)

THE WELLINGTON AIRPORT SEASON OF

FOR THE BIRDS

MARK ANDERSON, JONY EASTERBY, KATHY HINDE,
MARCUS MCSHANE AND TANE UPJOHN-BEATSON,
JOHANN NORTJE AND CAMERON MAY,
ULF PEDERSEN, AND ESTHER TEW

(England/Wales/New Zealand)

As dusk falls, gather the whānau together for an adventure in the bush, at this celebration of light, flight and birdsong from the makers of 2014 Festival hit *Power Plant*. This time the team has been joined by New Zealand artists to create an enchanting walk-through art experience in the native forest of Otari-Wilton's Bush.

Whether it's our iconic kiwi or Sirocco the superstar kākāpō, Angry Birds or Twitter, we have a special connection with our feathered friends. Through ingenious use of light, sound and moving sculpture, the artists will get you thinking about the mystery and beauty of the avian world — and why it should be protected.

Take some time out from the madness of modern life to wander through the night and celebrate these wonders of nature.

IMPORTANT INFORMATION

- ▶ This is an all-weather event and will proceed unless you are advised otherwise.
- ▶ Please wear appropriate footwear. There are steps and hills on the walk.
- ▶ This event is great for kids, but avoid prams or strollers as the track is not suitable in parts.
- ▶ Limited free parking will be provided at Ian Galloway Park with a shuttle to the start of the walk. Please allow at least 30 minutes before your session time for this.
- ▶ If you can, use alternative forms of transport. The No.14 bus travels between Rongotai and Wilton via the central city.

"I CANNOT THINK OF ANOTHER ART
EXPERIENCE THAT HAS BETTERED IT"

JAY GRIFFITHS, AUTHOR

FAMILY

VISUAL ARTS

WHEN

THU 3 –
SAT 19 MAR
(EXCEPT MON)
8PM – 10.15PM

SESSIONS START
EVERY 15 MINUTES

WHERE

OTARI-WILTON'S BUSH

TICKETS

ADULT \$35

CHILD \$19

FAMILY (2 ADULTS,
2 CHILDREN) \$100

FAMILY (1 ADULT,
2 CHILDREN) \$65

PARTNERED BY



WITH SUPPORT FROM



YOU'LL ALSO LIKE

*Sila: The Breath of
the World, p57*

*The Contact Festival
Playground, p64*

LA VERITÀ

WRITTEN AND DIRECTED BY DANIELE FINZI PASCA
COMPAGNIA FINZI PASCA

(Switzerland)



"THIS SHOW IS SURE TO PLEASE ANYONE
WHO BELIEVES LIFE IS WORTH DREAMING"

EL OBSERVADOR, MONTEVIDEO



IMAGES: VIVIANA CANGIALOSI (MAIN)/ROBERT DESCHARNES

SPECTACULAR

CIRQUE

DANCE

THEATRE

WHEN

WED 2 – SAT 5 MAR,
7.30PM
SUN 6 – MON 7 MAR,
6PM
SAT 5 MAR, 1.30PM

WHERE

ST JAMES THEATRE

TICKETS

EARLY BIRD A\$79
A\$89, B\$69, C\$49,
D\$39

DURATION

2HRS 5MINS
(INC 20MIN INTERVAL)

PARTNERED BY

 Fletcher

YOU'LL ALSO LIKE

Te Pō, p32

Cineastas, p30



La Verità is an experience that'll have you gasping as much at its imaginative feats as its physical ones. Daniele Finzi Pasca has overseen not one but two Winter Olympics closing ceremonies so knows how to stage a spectacular show.

This one has you entering the world of a surrealist painting, with its heady mix of acrobatics, theatre, dance and music performed against the monumental Salvador Dalí backdrop that sparked the show.

But where Dalí was inspired by nightmares, Compagnia Finzi Pasca's "gaze is always charmed, inspired by dreams". This is a dream you won't want to wake from, as the agility of mind and body displayed by these cirque veterans leaves you breathless.

© Salvador Dalí, Fundación Gala-Salvador Dalí.

DEAD DOG IN A SUITCASE

(AND OTHER LOVE SONGS)
A NEW BEGGAR'S OPERA

KNEEHIGH WITH LIVERPOOL
EVERYMAN & PLAYHOUSE

(United Kingdom)

"FIENDISHLY CLEVER ...
A CONSTANT BARRAGE OF
VISUAL, THEATRICAL AND
MUSICAL SURPRISES"

THE STAGE

Busting with
wit, wonder and
weirdness, this was
one of *The Guardian's*
Top 10 theatre shows
of 2014.

The ever-inventive,
multi-talented performers
of Tony Award-nominated
Kneehigh are renowned as
creators of wildly energetic
and hugely popular shows.
Following *Tristan & Yseult*
(2006) and *The Wild Bride*
(2012), they return to the
Festival with a reworking
of John Gay's bawdy
18th-century musical satire
The Beggar's Opera, updated
with a new score that mixes
Renaissance polyphony, folk,
heavy metal, ska, grime and
dubstep. Who wouldn't want
to hear how *that* works?

Please Note: This show
contains strobe lighting.

Recommended for ages 14+

THEATRE

MUSIC

WHEN

FRI 26 –
SAT 27 FEB, 8PM

SUN 28 FEB, 1.30PM
AND 7.30PM

MON 29 FEB –
WED 2 MAR, 7PM

WHERE

OPERA HOUSE

TICKETS

EARLY BIRD A\$69
A\$79, B\$59,
C\$39

DURATION

2HRS 15MINS (INC
15MIN INTERVAL)

ARTIST TALK

MON 29 FEB, SEE P80

AD)))

The performance on
Monday 29 February
at 7pm will be
audio described.

PARTNERED BY

MinterEllison
RuddWatts

YOU'LL ALSO LIKE

La Verità, p26

*The God that
Comes*, p38

CINEASTAS

MARIANO PENSOTTI

(Argentina)

A hot shot director making a Hollywood blockbuster comedy; an experimental documentary-maker with a cult following and an identity crisis; a disgruntled McDonald's employee plotting a corporate-bashing revenge flick; and a writer toiling on a doomed second screenplay for a rich French producer.

Downstairs, you'll follow the work, lives and loves of four film-makers over a year in Buenos Aires. Upstairs, the films they are making come to life.

The stunning two-tier staging and director Mariano Pensotti's inventive "filmic drama" proved a hit at New York's Under the Radar Festival, and will thrill Wellington's many film fans as well as its theatre lovers.

"A MARVEL OF THEATRICAL WIT AND INGENUITY"

THE NEW YORK TIMES



IMAGE: CARLOS FURMAN

THEATRE

WHEN

THU 10 – SUN 13 MAR
TUE 15 – WED 16 MAR
8PM

WHERE

OPERA HOUSE

TICKETS

EARLY BIRD A\$69
A\$79, B\$65

DURATION

1HR 45MINS
(NO INTERVAL)

Spanish with
English surtitles.

PARTNERED BY

Stem
content creators

WITH SUPPORT FROM


Embassy of Argentina

YOU'LL ALSO LIKE

Dead Dog in a Suitcase, p28

Complexity of Belonging, p40



IMAGE: CARL BLAND (DESIGN) AND JOHN McDERMOTT (PHOTOGRAPH)

THEATRE

TE PŌ

THEATRE STAMPEDE AND
NIGHTSONG PRODUCTIONS

(New Zealand)

A policeman, a priest
and a blind man look for
clues that will lead them
to the missing playwright
Bruce Mason. Where
has he gone? What made
him leave his desk and
vanish into the night?
And what is that seagull
at the window trying to
say? For all of *Te Pō*'s
odd characters, finding
Mason has become a
matter of life, death and
catching a big fish.

"A MODERN PARABLE,
PART-FELLINI,
PART-BECKETT,
PART-DALÍ
AND WITH MORE THAN
A LITTLE LAUREL
AND HARDY"

METRO ON 360 - A THEATRE
OF RECOLLECTIONS

Te Pō is an eloquent and surprising
comedy punctuated by Māori
showband songs. It's about searching
for someone you have loved and lost
and finding them again.

From the same out-of-the-box team
that produced the award-winning
360 - a theatre of recollections,
including writer Carl Bland and
director Ben Crowder, *Te Pō* leaves
no theatrical stone unturned in its
mission to give us a unique view of
the world.

Find something to hook your heart
on at this original, extraordinary and
moving show.

Co-produced by New Zealand Festival, Auckland Arts
Festival, Theatre Stampede and Nightsong Productions.

Production animals designed, created and
sponsored by Main Reactor.

WHEN

TUE 1 – SAT 5 MAR,
7.30PM
SAT 5 MAR, 1.30PM

WHERE

SOUNDINGS THEATRE,
TE PAPA

TICKETS

EARLY BIRD A\$59
A\$69

DURATION

1HR 25MINS
(NO INTERVAL)



The performance on
Thursday 3 March at
7.30pm will be
New Zealand Sign
Language interpreted.

ARTIST TALK

THU 3 MAR, SEE P80

PARTNERED BY



WITH SUPPORT FROM



YOU'LL ALSO LIKE

La Verità, p26
*Complexity of
Belonging*, p40

EVERY BRILLIANT THING

BY DUNCAN MACMILLAN
WITH JONNY DONAHOE
DIRECTED BY GEORGE PERRIN
PAINES PLOUGH AND
PENTABUS THEATRE COMPANY

(United Kingdom)

You're six years old. Mum's in hospital.
Dad says she's "done something stupid".
She finds it hard to be happy. So you start to
make a list of everything that's brilliant about
the world. Everything that's worth living for.

1. Ice Cream
2. Kung Fu Movies
3. Laughing so hard you shoot milk
out your nose
4. Construction cranes
5. Me

A new play about depression and the lengths
we will go to for those we love.

Based on true and untrue stories.

Recommended for ages 14+

YOU'LL ALSO LIKE

Dead Dog in a Suitcase, p28

The God that Comes, p38

THEATRE

WHEN

WED 2 –
SAT 5 MAR, 8PM
SAT 5 MAR, 4PM

WHERE

HANNAH
PLAYHOUSE

TICKETS

EARLY BIRD GA\$49
GA\$59

DURATION

1HR

PARTNERED BY

nielsen



IMAGE: PAINES PLOUGH AND PENTABUS THEATRE COMPANY

THEATRE

WHEN

WED 16 MAR, 5.30PM
THU 17 – SAT 19 MAR,
12.30PM AND 5.30PM

WHERE

UNDER THE SAILS,
OUTSIDE TSB BANK
ARENA

TICKETS

EARLY BIRD GA\$45
GA\$49

DURATION

50MINS

ARTIST TALK

TUE 15 MAR, SEE P80

PARTNERED BY

springload

WITH SUPPORT FROM



Australian High Commission



Developed with support
from Creative Victoria and
assisted by the Australian
Government through the
Australia Council. Initiated
through the Victoria
Commissions, supported by
the Victorian Government,
through the Community
Support Fund.

YOU'LL ALSO LIKE

*The Woman Who
Forgot, p37*

*Complexity of
Belonging, p40*

SMALL METAL OBJECTS

BACK TO BACK THEATRE

(Australia)

"TURNS THE NOTION OF THEATRE AND THE EVERYDAY
INSIDE OUT ... A PURE, OPEN-HEARTED, COMPLEX
AND BREATHTAKING PRODUCTION"

THE SYDNEY MORNING HERALD

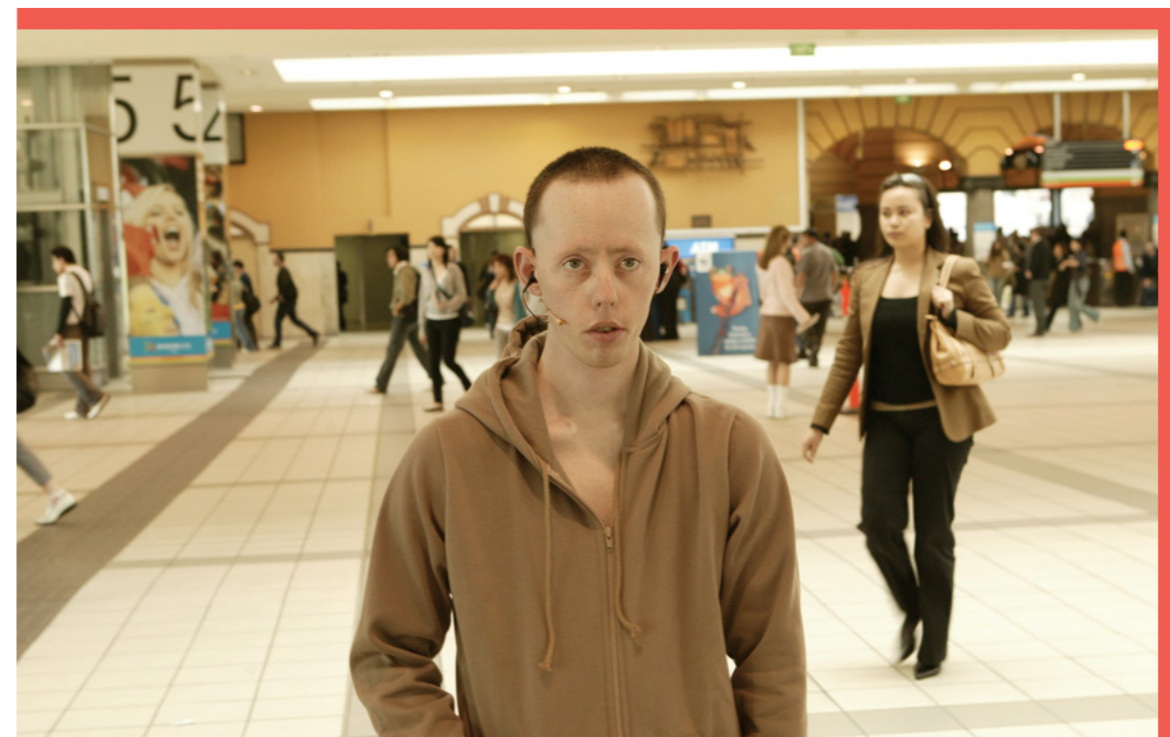


IMAGE: JEFF BUSBY

This ingenious theatrical gem unfolds amid the pedestrian traffic of the city. On a
raised seating bank with individual sets of headphones, the audience is wired in
to an intensely personal drama being played out somewhere in the crowd.
One of Australia's most original theatre companies brings you the story of a drug
deal and an existential crisis.

THE DEVIL'S HALF-ACRE

TRICK OF THE LIGHT THEATRE

(New Zealand)

The award-winning team that delighted audiences with *The Bookbinder* and *The Road that Wasn't There* return with a darker, more adult tale of the uncanny. *The Devil's Half-Acre* is set in the slums of gold rush-era Dunedin, when the powerhouse of New Zealand lay south of the Waitaki River rather than north of the Bombay Hills.

Combining puppetry, live music and a score by acclaimed composer Tane Upjohn-Beatson, it conjures a landscape of brothels, gaming houses and opium dens; a melting pot of immigrants from all over the world – prostitutes, prospectors, beggars and conmen, the newly rich and newly broke, perhaps even the devil himself...

THEATRE

WHEN

WED 9 –
SUN 13 MAR, 7PM

WHERE

HANNAH PLAYHOUSE

TICKETS

EARLY BIRD A\$45
A\$49, B\$39

DURATION

1HR 30MINS
(NO INTERVAL)

PARTNERED BY

THE DOMINION POST

WITH SUPPORT

FROM



YOU'LL ALSO LIKE

La Verità, p26

Te Pō, p32

IMAGE: TOM HOYLE

NOT IN OUR NEIGHBOURHOOD

TIKAPA PRODUCTIONS

(New Zealand)



Prepare yourself for a powerful night of theatre at Jamie McCaskill's thought-provoking and refreshingly honest play about the many guises of domestic violence, a sell-out at the 2015 Ahi Kaa Festival.

Creating a documentary to raise awareness, Maisey Mata encounters Sasha, Cat and Teresa at the Women's Refuge in Hauraki. Actor Kali Kopae gives an incredible performance as both Maisey and the three very different women, who are each seeking a safe haven and trying to rebuild their lives.

THE WOMAN WHO FORGOT

WRITTEN BY RACHEL DAVIES

DIRECTED BY JESS FEAST

STORYBOX (New Zealand)

Who needs a stage when you have an entire city? Fans of the 2014 Festival's "subtle mobs" won't want to miss this even more multi-dimensional piece of adventure theatre, which combines a smartphone app, texts, Skype calls and live performers. Step into the shoes of Elizabeth Snow, who wakes suddenly with no idea who she is, and join her on an immersive journey through Wellington as she tries to piece together the fragments of her life.

Smartphone and headphones essential.

Contains adult themes and strong language.

YOU'LL ALSO LIKE

small metal objects, p35

Complexity of Belonging, p40

PARTNERED BY



WITH SUPPORT

FROM



THEATRE

WHEN

WED 2 – WED
9 MAR (EXCEPT MON)
EIGHT PEOPLE EVERY
15MINS NOON – 2PM
AND 6PM – 9PM

WHERE

CENTRAL
WELLINGTON

TICKETS

EARLY BIRD GA\$39
GA\$49

DURATION

1HR 15MINS
(NO INTERVAL)

WITH VENUE

SUPPORT FROM



IMAGES (FROM TOP): TIM ELKINGTON/STORYBOX

THE GOD THAT COMES

2B THEATRE COMPANY

(Canada)

Charge your glass for this booze-soaked rock 'n' roll cabaret in which Hawksley Workman celebrates the god of wine and ecstasy. In a city governed by greed and ruled by an oppressive leader, find out what happens when the people flee the city and stage a debauched

revolution. Part play, part concert, all Bacchanalian, this is a sexy one-man show overflowing with "deft wit and razor sharp humour" (*Calgary Sun*, Canada). Unleash your inner animal and don't forget the Bloody Mary for the morning after.

YOU'LL ALSO LIKE

Dead Dog in a Suitcase, p28

L'orchestre

d'hommes-orchestres, p62

THEATRE

MUSIC

WHEN

TUE 15 –
SAT 19 MAR, 8PM
SUN 20 MARCH, 6PM

WHERE

HANNAH
PLAYHOUSE

TICKETS

EARLY BIRD A\$49
A\$59, B\$39

DURATION

1HR 15MINS
(NO INTERVAL)

PARTNERED BY



PAGE TURNERS

DIRECTED BY JANE YONGE
PRODUCED BY ISOBEL MEBUS

(New Zealand)

What do Te Rauparaha, Robin Hyde, Nancy Wake, James K Baxter and Carmen Rupe have in common? They were all Wellingtonians – and all trouble-makers. This show tells their stories from the set of a three-metre-high pop-up book. Entertaining and enlightening, *Page Turners* is based on an original idea by Grant Stevenson, and is back by popular demand after a successful run at the National Library as part of the *Capital 150* celebrations.

THEATRE

FREE

WHEN

SUN 6 MAR, 11AM,
1PM, 3PM

WHERE

UPSTAIRS AT
ST JAMES THEATRE

DURATION

1HR

YOU'LL ALSO LIKE

The Devil's

Half-Acre, p36

Miranda July, p67



IMAGES (FROM TOP): TRUDIE LEE/SHANE LOADER

IMAGE: TABITHA ARTHUR

THEATRE

FAMILY

THE ACB WITH HONORA LEE

BY KATE DE GOLDI

ADAPTED AND DIRECTED BY JANE WADDELL

CIRCA THEATRE

(New Zealand)

WHEN

SAT 27 FEB –
SAT 26 MAR
TUE – SAT 6.30PM
SUN 4PM

WHERE

CIRCA ONE

TICKETS

ADULTS \$39
CHILDREN \$19
FAMILY (2 ADULTS
2 CHILDREN) \$97

DURATION

1HR 20MINS
(NO INTERVAL)

ARTIST TALK

WED 16 MAR, SEE P80

 **CIRCA
THEATRE**

See Writers Week, p69, for *Spotlight on Playwrights* as part of Circa Theatre's 40th anniversary.

PARTNERED BY

Vivien Hirschfeld

WITH SUPPORT FROM

NEW ZEALAND PLAYWRIGHTS
PLAYMARKET
AGENT, ADVISOR, BOOKSHOP

 **creative** *nz*
ARTS COUNCIL OF NEW ZEALAND / TOU AOTIAROA

Kate De Goldi is one of New Zealand's most loved authors, popular with both adults and children. Quirky humour, playfulness and intergenerational love are at the heart of this adaptation of her 2012 novel, *The ACB with Honora Lee*.

A charming exploration of kindness, patience and acceptance, it follows the relationship between young Perry

and her eccentric Gran, Honora Lee, who's losing her memory. As more and more words slip from Gran's grasp, Perry furiously gathers them up, turning them into an illustrated and disorderly alphabet book, which becomes a gift of love to her grandmother.

YOU'LL ALSO LIKE

Fly Me Up to

Where You Are New Zealand, p64

Chalk About, p66

COMPLEXITY OF BELONGING

A PROJECT BY FALK RICHTER AND ANOUK VAN DIJK
CHUNKY MOVE

(Australia)

“WORD AND
MOVEMENT ARE
INTRICATELY
INTERTWINED ...
DEEPLY MOVING
AND FREQUENTLY
HILARIOUS...
A MUST SEE.”

AUSTRALIAN STAGE



IMAGE: JEFF BUSBY

DANCE

THEATRE

WHEN

FRI 11 — SUN 13 MAR,
7.30PM
SUN 13 MAR, 1.30PM

WHERE

ST JAMES THEATRE

TICKETS

EARLY BIRD A\$79
A\$89, B\$69, C\$49,
D\$39

DURATION

1HR 40MINS
(NO INTERVAL)

ARTIST TALK

THU 10 MAR, SEE P80

PARTNERED BY

Assignment:

WITH SUPPORT FROM



Australian High Commission



The performance on
Sunday 13 March at
1.30pm will be New
Zealand Sign Language
interpreted.

YOU'LL ALSO LIKE

Tanztheater
Wuppertal Pina
Bausch, p12

small metal
objects, p35

Lauren feels weird about feeling lonely. Jimi feels weird he isn't a woman. Tara feels weird she *is* a woman. Josh never really feels Australian enough. From two of dance and theatre's most unflinching makers comes a daring and darkly humorous exploration of identity in the age of social media.

Complexity of Belonging peers into the lives of nine interconnected people as they grapple with the question: how and where do I belong? Nationality, gender, sexuality and history collide and fragment on stage in this audacious theatrical exposé of the daily trials of surviving in a hyper-connected, hyper-sensitive, globalised society.

It's "boundary-pushing choreographic theatre that displays the highest level of artistry" (*The Age*). It's an outsider take on Australia. It's also an insider take on the 21st century.

Co-produced by Chunky Move, Melbourne Theatre Company, Melbourne Festival, Brisbane Festival and Théâtre National de Chaillot.

SPEED OF LIGHT

THREE BRILLIANT DANCEWORKS

ROYAL NEW ZEALAND BALLET

(New Zealand)

“THE WORK THAT CHANGED BALLET FOREVER”

THE GUARDIAN ON IN THE MIDDLE, SOMEWHAT ELEVATED

These New Zealand premieres of three contemporary dance classics showcase the energy, precision and charisma of the Royal New Zealand Ballet under the artistic leadership of Francesco Ventriglia.

Andonis Foniadakis's *Selon désir*, inspired by the monumental opening choruses of the *St Matthew* and *St John Passions*, was created for Geneva Ballet in 2004 and is a gorgeous synthesis of colour, light, music and movement.

Commissioned by Rudolf Nureyev for the Paris Opéra Ballet in 1987, William Forsythe's revolutionary *In the Middle, Somewhat Elevated* is bold and brilliant, with “six women and three men prowling around the stage, like fierce creatures exploring an alien space” (*The Guardian*).

Alexander Ekman's *Cacti*, premiered in The Hague in 2010, combines daredevil virtuosity and split-second timing with a playful wit. Here the RNZB is joined onstage by the New Zealand String Quartet in a celebration of physicality and the sheer joy of dance.

DANCE

WHEN

FRI 26 –
SAT 27 FEB, 7.30PM
SAT 27 FEB, 1.30PM
SUN 28 FEB, 4PM

WHERE

ST JAMES THEATRE

TICKETS

P\$87 – \$110,
A\$77, B\$63,
C\$49, D\$35

CHILD AND OTHER
CONCESSION RATES
AVAILABLE

DURATION

1HR 45MINS (WITH
TWO 15MIN INTERVALS)

FREE EVENTS

SAT 27 FEB
POST-MATINEE Q&A
WITH ARTISTIC STAFF AND
DANCERS; 6.20PM – 6.50PM
WARM UP, CURTAIN UP –
WATCH THE COMPANY
PREPARE FOR ITS EVENING
PERFORMANCE

SUN 28 FEB 3PM – 3.30PM
PRE-PERFORMANCE
CHOREOGRAPHIC AND
MUSIC TALKS

WITH SUPPORT FROM



YOU'LL ALSO LIKE

Tanztheater Wuppertal
Pina Bausch, p12

Douglas Wright's
The Kiss Inside, p44

“THE WORK
OF A MASTER
CRAFTSMAN,
A PURVEYOR OF
IMAGES WHO HAD
THE AUDIENCE
CAPTURED FROM
THE MOMENT THE
CURTAIN ROSE”

THEATREVIEW

THE KISS INSIDE

DOUGLAS WRIGHT DANCE

(New Zealand)

When Douglas Wright makes a new work, dancer Sarah-Jayne Howard drops everything to be in it – “because I just can’t not be there with him”. You don’t have to be a dancer to feel like that.

Produced by Jumpboard Productions, *The Kiss Inside* is the choreographer’s meditation on the search for ecstasy, that buzz we are all looking for, “whether it’s through a chocolate éclair, or it’s the rush of heroin, or an orgasm”.

Wright has dug deeply into the human psyche and returned with a visual poem full of provocative images and exquisite, sometimes frenzied, movement — all to a soundtrack combining classical Sufi music, Patti Smith and JS Bach. Discover for yourself what the buzz is about.

DANCE

WHEN

FRI 4 – SAT 5 MAR,
8PM

WHERE

OPERA HOUSE

TICKETS

EARLY BIRD A\$59
A\$69, B\$49, C\$39

DURATION

1HR 15MINS
(NO INTERVAL)

PARTNERED BY

THE PERFORMING
ARTS FOUNDATION
OF WELLINGTON

WITH SUPPORT FROM

 creative nz
ARTS COUNCIL OF NEW ZEALAND TOI AOTIAROA

YOU’LL ALSO LIKE

Tanztheater Wuppertal Pina Bausch, p12
Complexity of Belonging, p40



Four centuries old and more popular than ever, Monteverdi's *Vespro della Beata Vergine* (1610) is either one of the last great masterpieces of Renaissance music or one of the first stirrings of the Baroque: a landmark work.

You won't hear it played in its entirety very often, because its intricate harmonies and virtuoso solo parts constitute a monumental test of any ensemble that attempts it. But with a well-established reputation as one of the best European early music groups, multiple *Gramophone* Award winners Concerto Italiano are renowned worldwide for their performances of this work.

MUSIC

WHEN

SAT 27 FEB, 7.30PM

WHERE

MICHAEL FOWLER CENTRE

TICKETS

EARLY BIRD P\$99
P\$109, A\$89, B\$79,
C\$69, D\$39

DURATION

1HR 45MINS (INC
20MIN INTERVAL)

PARTNERED BY



YOU'LL ALSO LIKE

Relict Furies, p51

*Kiri Te Kanawa with
Voices New Zealand
Chamber Choir*, p55

"THERE ARE FEW PERFORMERS BETTER-VERSED IN THE MUSIC OF CLAUDIO MONTEVERDI THAN RINALDO ALESSANDRINI AND THE ENSEMBLE HE FOUNDED 30 YEARS AGO"

THE GUARDIAN

CONCERTO ITALIANO

(Italy)



THE WORLD PREMIERE OF

BRASS POPPIES

MUSIC BY ROSS HARRIS
LIBRETTO BY VINCENT O'SULLIVAN

(New Zealand)

This ground-breaking new chamber opera from Ross Harris and Vincent O'Sullivan (*Requiem for the Fallen*) powerfully portrays Gallipoli as both a military story and one of domestic New Zealand.

Wives and families at home in Wellington are as much to the fore as men in uniform at the front in an innovative depiction of the 1915 battle of Chunuk Bair. Directed by Jonathan Alver, with award-winning tenor James Egglestone as Wellington Regiment Lieutenant-Colonel William Malone, and the score performed by Stroma New Music Ensemble, *Brass Poppies* offers fresh perspectives on World War I, along with music and emotional resonances that will stay with you long after the curtain falls.

Co-produced by New Zealand Festival, Auckland Arts Festival and New Zealand Opera, with support from the Lottery Grants Board.

**"EXTREMELY VISIONARY ... THUNDEROUS
AND AWE-INSPIRING"**

PETER MECHEN ON REQUIEM FOR THE FALLEN, RADIO NEW ZEALAND CONCERT'S UPBEAT

MUSIC

WHEN

THU 3 –
SUN 6 MAR, 7.30PM

WHERE

SHED 6

TICKETS

EARLY BIRD A\$59
A\$69

DURATION

1HR 10MINS
(NO INTERVAL)

WITH SURTITLES

ARTIST TALK

FRI 4 MAR, SEE P80

WITH SUPPORT FROM

Peter and
Carolyn Diessl

NZOPERA



creative *nz*
ARTS COUNCIL OF NEW ZEALAND TOI AOTIAROA

YOU'LL ALSO LIKE

Concerto

Italiano, p46

No Man's Land, p52

Kiwi
bank.

We love
making
Kiwis
dance.

We're embracing Kiwis' joy of dancing, so we're delighted to bring you the opening event of the New Zealand Festival 2016 – *Le Grande Continental*®.

This world-renowned mass dance spectacular has appeared across the world. Now it is Wellington's turn.

Don't miss this incredible kick up the arts. Come and feel the joy of independence.

NEW ZEALAND FESTIVAL 

RELICT FURIES

MUSIC BY GARETH FARR
LIBRETTO BY PAUL HORAN
(New Zealand)

Premiered to great acclaim at the Edinburgh International Festival, *Relict Furies* gives a voice to World War I's New Zealand "relicts" – the widows and sweethearts who waved their men goodbye and never saw them again.

Mezzo soprano Wendy Doyle sings Paul Horan's powerfully affecting libretto ("Tomorrow I wear my wedding shoes to your funeral"), while Gareth Farr's score places two mirrored string sections from the New Zealand Symphony Orchestra on opposite sides of Wellington Cathedral of St Paul to open up the vast internal landscapes of bereavement and fury.

The concert also includes works for strings by Edward Elgar, Ralph Vaughan Williams and Peter Sculthorpe.

Co-commissioned by New Zealand Festival and Edinburgh International Festival.

PAUL HORAN IMAGE: ALAN MOYLE



MUSIC

WHEN

TUE 15 MAR, 7PM

WHERE

WELLINGTON
CATHEDRAL
OF ST PAUL

TICKETS

EARLY BIRD GA\$49
GA\$59

DURATION

1HR

WITH SUPPORT FROM



creative
nz
ARTS COUNCIL OF NEW ZEALAND TOI AOTEAROA

YOU'LL ALSO LIKE

Concerto Italiano, p46

Brass Poppies, p48

"A HEART-STABBING EVOCATION
OF THE FIRST WORLD WAR"

THE SCOTSMAN

THE WORLD PREMIERE OF

NO MAN’S LAND

A LOVE LETTER
TO PEACE

JOHN PSATHAS/JASMINE MILLET/
MATHEW KNIGHT

(New Zealand)

“NO MAN’S LAND APPEARS
TO ME TO SEEK TO
HONOUR THE MANY NEW
ZEALANDERS WHO SERVED
IN THE ARMED FORCES
DURING THE WAR, OF
WHOM MANY LOST THEIR
LIVES, AND TO CARRY
A STRONG MESSAGE
OF RECONCILIATION
THROUGH THE COMMON
LANGUAGE OF MUSIC”

HELEN CLARK

FEATURING

NAWRAS
ALHAJIBRAHIM

JOE CALLWOOD

BIJAN CHEMIRANI

HAYDEN CHISHOLM

PAOLO CIMMINO

FARA DIOUF

DAVID DOWNES

TECWYN EVANS

ALEXEJ GERASSIMEZ

RENKEI HASHIMOTO

DAVID HENDERSON

JACK HOOKER

SHAHBAZ HUSSAIN

JOSHUA HYDE

VAGELIS KARIPIS

ZOFIA
KOLBE-WOJDYR

JOLANTA
KOSSAKOWSKA

SOFIA
LABROPOULOU

GARETH LUBBE

PIERRE MÉA

MEETA PANDIT

New Zealand has
never witnessed a
multi-layered world
music collaboration
like this before.
John Psathas is
no stranger to
large-scale works
but this is his most
ambitious project yet.

Featuring 150 musicians from more than 20 countries, including Serj Tankian (Lebanon/Armenia/USA), Meeta Pandit (India), Márta Sebestyén (Hungary) and the Strasbourg Philharmonie (France), *No Man’s Land* brings together the descendants of opposing forces in World War I and reunites them in friendship and musical solidarity on the sites where their grandfathers and great-grandfathers fought a century ago.

Director Jasmine Millet and cinematographer Mathew Knight’s film of this epic global orchestra – playing a Psathas composition that leaps musical genres as it does borders, from folk to jazz to rock to classical – will be seen and heard in tandem with a select group of musicians performing live on stage.

Co-produced by the New Zealand Festival and Victoria University of Wellington, with support from the Lottery Grants Board, British High Commission, Embassy of the Republic of Poland, Embassy of France and New Zealand-France Friendship Fund.

STRATIS PSARADELIS

JOHN PSATHAS

SIMONE REBELLO

CALEB ROBINSON

DAVID ROSS

MUHAMMET
SADRETTIN ÖZCIMI

BENJAMIN SCHAFER

MÁRTA SEBESTYÉN

YANAL STALTI

SVET STOYANOV

MATEUSZ SZEMRAJ

SERJ TANKIAN

ARIANA TIKAO

DERYA TÜRKAN

RUSSEL WALDER

HANG MASSIVE

NETHERLANDS
BLAZERS ENSEMBLE

OUM

POLISH RADIO CHOIR

REFUGEES OF RAP

STRASBOURG
PHILHARMONIE

THE NUDGE

MUSIC

FILM

WHEN

WED 2 MAR,
7.30PM

WHERE

MICHAEL FOWLER
CENTRE

TICKETS

EARLY BIRD A\$65
A\$69, B\$59

DURATION

1HR 20MINS
(NO INTERVAL)

CO-PRODUCED BY



WITH SUPPORT FROM



YOU’LL ALSO LIKE

Jazz at Lincoln Center
Orchestra with Wynton
Marsalis, p18
dirtsong, p60

REIMAGINING THE CLASSICS

URI CAINE WITH THE
NEW ZEALAND STRING QUARTET

(United States/New Zealand)



Brilliant jazz pianist and composer Uri Caine will be using the classics as a springboard for his exciting improvisations.

Caine's previous collaborations extend from the Beaux Arts Trio to John Zorn, from the Woody Herman Band to the Moscow Chamber Orchestra, and works he's reimagined include Bach's *Goldberg Variations* and Beethoven's *Diabelli Variations*.

For this concert, he's joining forces with the New Zealand String Quartet, already known for their creative engagement with

jazz artists, including pianist Mike Nock and American guitarist Jim Hall.

As well as the magnificent *Goldberg Variations*, described by Bach as "Diverse Variations Composed for Music Lovers to Refresh their Spirits", they will be reflecting on the Allegretto con variazioni of Beethoven's *Harp* Quartet Opus 74 and playing some of Caine's originals for piano and string quartet.

MUSIC

WHEN

SUN 20 MAR, 5PM

WHERE

MICHAEL FOWLER
CENTRE

TICKETS

A\$85, B\$65, C\$35

DURATION

2HRS
(INC 20MIN
INTERVAL)

PRESENTED BY



WITH SUPPORT

FROM



YOU'LL ALSO LIKE

Jazz at Lincoln Center Orchestra with Wynton Marsalis, p18
Concerto Italiano, p46

IMAGES (FROM TOP): MAARTEN HOLL/BILL DOUTHART

"A DEEP MUSIC INTELLIGENCE IN A RECITAL THAT APPROACHES PERFECTION"

THE SYDNEY

MORNING HERALD

DAME KIRI TE KANAWA

WITH VOICES NEW ZEALAND CHAMBER CHOIR
AND PIANIST TERENCE DENNIS

(New Zealand)

Dame Kiri has one of the world's great and beloved voices. Her career has spanned more than 40 years and she's one of the most honoured sopranos of all time. This one-off recital, featuring Schubert, Strauss and Brahms among other

composers, allows you to hear Dame Kiri solo and alongside the "supreme polish and breathtaking accuracy" (*The Dominion Post*) of Voices New Zealand Chamber Choir, whose members are drawn from the country's best singers and are conducted

by Music Director Karen Grylls. The combination – together with Dame Kiri's longtime piano accompanist, the internationally renowned Terence Dennis – promises to be very special indeed.

YOU'LL ALSO LIKE

Concerto Italiano, p46
Brass Poppies, p48

WHEN

SUN 13 MAR, 6PM

WHERE

MICHAEL FOWLER
CENTRE

TICKETS

EARLY BIRD P\$89
P\$95, A\$79,
B\$69, C\$59

PARTNERED BY

HIGGINS

WITH SUPPORT FROM



MUSIC

IMAGE: DUNCAN INNES



MIYATA-YOSHIMURA-SUZUKI TRIO

WITH MUSIC BY SAMUEL HOLLOWAY,
DYLAN LARDELLI AND CHRIS GENDALL

(Japan/New Zealand)

This cutting-edge fusion of East and West brings together three of New Zealand's most explorative composers with Japan's virtuosic Mayumi Miyata (shō), Nanae Yoshimura (koto) and Tosiya Suzuki (recorder). The Kiwis have written new works, and they will be performed along with traditional Japanese repertoire and works by Toshio Hosokawa, Osamu Kawakami and Takashi Tokunaga that further showcase the trio's exquisite playing.

IN ASSOCIATION WITH



WITH SUPPORT FROM



MUSIC

WHEN

SUN 28 FEB, 3PM

WHERE

ST ANDREW'S ON
THE TERRACE

TICKETS

EARLY BIRD GA\$39
GA\$45

DURATION

1HR 20MINS
(NO INTERVAL)

ON THE ROAD

LOWER HUTT, 29 FEB
SEE P78

YOU'LL ALSO LIKE

Concerto Italiano, p46
No Man's Land, p52

SILA: THE BREATH OF THE WORLD

BY JOHN LUTHER ADAMS

(United States)

MUSIC

FREE

WHEN

SAT 5 MAR, 5PM
SUN 6 MAR, 3PM

WHERE

CIVIC SQUARE

DURATION

1HR 10MINS

WITH SUPPORT FROM



YOU'LL ALSO LIKE

*Tanztheater
Wuppertal Pina
Bausch*, p12
*The Contact Festival
Playground*, p64



“When you take music outdoors it turns the whole situation inside out. Outdoors we’re invited to expand our awareness and to listen as far as we can”

THE GUARDIAN

You won't have ever experienced a concert like this before, or one of the city's public spaces used so creatively. For this unique composition by “one of the most original musical thinkers of the new century” (*The New Yorker*), more than 60 Orchestra Wellington musicians, set loose from a conductor's baton and scattered around Civic Square, are allowed to play at their own speed,

with just one proviso: each sustained tone or rising phrase lasts the length of a full exhalation. There is no best seat – wander around to take in all the different perspectives – and don't complain about the nearby traffic, people talking or the noise of cellphones, as they're all part of the “ecological listening” *Sila* celebrates.

IMAGE: KEVIN YATAROLA FOR LINCOLN CENTER, NEW YORK

Supporting talent on any stage.

JacksonStone & Partners
Executive Search & Recruitment
Proud sponsor of the New Zealand Festival

FLYING NUN DUNEDIN DOUBLE



THE CHILLS

(New Zealand)

Formed in Dunedin in 1980, The Chills were one of the first acts to be signed to Flying Nun. They have had a revolving cast of band members, with frontman Martin Phillipps the only constant. His knack for writing fantastic pop songs has given them chart hits in New Zealand and a cult following around the world.

The Chills' critically acclaimed songs include *Pink Frost*, *I Love My Leather Jacket* and *Heavenly Pop Hit*, to name just a few. In October 2015, they released their first full-length album in nearly two decades, *Silver Bullets*.



IMAGES: ALEXANDER HALLAG, THE MUSIC IS TALKING (THE CHILLS)/ERIK WINQUIST (THE VERLAINES)

MUSIC

WHEN

THE CHILLS –
TUE 8 MAR, 8PM

THE VERLAINES –
WED 9 MAR, 8PM

WHERE

SHED 6

TICKETS

EARLY BIRD A\$59
A\$69

WITH SUPPORT FROM

creative nz
ARTS COUNCIL OF NEW ZEALAND THE AUSTRALIA

Pub
Charity

YOU'LL ALSO LIKE

Sufjan Stevens, p22

The Phoenix
Foundation, p61

THE VERLAINES

(New Zealand)



"ANY GREAT MUSIC SCENE HAS ONE RECORD THAT CAPTURES ITS EARLY ESSENCE AND ANNOUNCES IT TO THE WORLD. FLYING NUN RECORDS' DUNEDIN DOUBLE EP IS THAT KIND OF RECORD. IT PUT FLYING NUN ON THE MAP, LITERALLY"

RUSSELL BROWN,
AUDIOCULTURE

Nearly 35 years after the 1982 record that helped launch New Zealand's most important independent record label and take the "Dunedin Sound" to the rest of the country and then the world, the New Zealand Festival has brought two of the *Dunedin Double* EP's bands together for a one-off pair of concerts already creating waves among music lovers.

And you know what, we still haven't given up hope of getting Sneaky Feelings to reform for our next Festival.

The Verlaines formed in Dunedin in 1981 and immediately made their mark with sophisticated songwriting and unique, uncompromisingly difficult torrents of harmony influenced by classical music.

Reuniting their 1986 line-up of Jane Dodd (bass), Robbie Yeats

(drums) and co-founder Graeme Downes (vocals/guitar), the band will perform a special set of songs written by Downes between 1979 and 1986 for the albums *Juvenilia*, *Hallelujah* and *Bird Dog*.

Of all their incarnations, it is this one with this repertoire that will strike at the heart of fans.



DIRTSONG

BLACK ARM BAND

(Australia)

“THE MUSIC IS UTTERLY CAPTIVATING, A MELLIFLUOUS BLEND OF VOICES AND INDIGENOUS AND MODERN INSTRUMENTS”

BUSINESS TIMES

FEATURING

- | | | |
|--------------|----------------|----------------|
| ARCHIE ROACH | DELINE BRISCOE | FRED LEONE |
| PAUL KELLY | EMMA DONOVAN | YIRRMAL MARIKA |
| MARK ATKINS | HOROMONA HORO | URSULA YOVICH |

There’s music that breaks down barriers, and then there’s music that obliterates them. Inspired by the words of author Alexis Wright, Australia’s Black Arm Band perform songs from 11 different Aboriginal languages in this soulful show, which will bring to you the heart and humanity of the country and its most celebrated musicians, including Archie Roach and special

guest artist Paul Kelly. Rich with complex harmonies and powerful melody, it will “send a shudder down your spine and bring a tear to your eyes” (*The Age*). Meanwhile, the cinematic screen behind the musicians opens a window on to the landscapes the music comes from, taking you on an immersive journey across a country you’ll never see quite the same way again.

IMAGE: BLACK ARM BAND

MUSIC

FILM

WHEN

SUN 28 FEB, 7PM

WHERE

MICHAEL FOWLER CENTRE

TICKETS

EARLY BIRD A\$59
A\$69, B\$49, C\$39

DURATION

1HR 20MINS
(NO INTERVAL)

ON THE ROAD

ARCHIE ROACH, PORIRUA,
27 FEB, SEE P78

PARTNERED BY

sputnik.

WITH SUPPORT FROM



YOU’LL ALSO LIKE

Te Pō, p32
No Man’s Land, p52

CALEXICO

(United States)



A sell-out at the 2010 Festival, these New Zealand favourites from Tucson, Arizona, return on the back of the success of their latest album, *Edge of the Sun*. Named for a border town in California, Calexico cross many musical frontiers: mariachi, cumbia, jazz, post-rock ... and plenty more besides. Prepare to be transported to the “desert noir” landscape of tumbleweed and tequila they’ve made their own.

YOU’LL ALSO LIKE

Sufjan Stevens, p22
The Chills and *The Verlaines*, p58

MUSIC

WHEN

SAT 19 MAR, 8PM

WHERE

OPERA HOUSE

TICKETS

EARLY BIRD A\$59
A\$69

PARTNERED BY

WILLIS BOND & Co



WITH SUPPORT FROM



“FULL OF TECHNICOLOR POP SPARKLE”

THE GUARDIAN

THE PHOENIX FOUNDATION

(New Zealand)



Twenty years in the game and The Phoenix Foundation remain one of New Zealand’s most beloved and innovative bands. They’re pretty popular elsewhere, too, with the *NME* praising latest album *Give Up Your Dreams* as “a fabulous meld of power-pop, electronica and US West Coast harmony that swings through techno-country ... and even dabbles in soulful house”. Catch them at their best – in front of a hometown audience.

MUSIC

YOU’LL ALSO LIKE

Sufjan Stevens, p22
The Chills and *The Verlaines*, p58

WHEN

THU 10 MAR,
8PM

WHERE

SHED 6

TICKETS

EARLY BIRD A\$39
A\$45

PARTNERED BY

RICOH
imagine. change.

WITH SUPPORT FROM



IMAGES (FROM TOP): JAIRO ZAVALA/WILL MOORE

L'ORCHESTRE D'HOMMES-ORCHESTRES PERFORMS TOM WAITS

(Québec-Canada)



Enter the “sheer energetic madness” (*This is Cabaret*) of this four-man band of one-man bands. Their tribute to the world of Tom Waits does the unimaginable and turns the gravel-voiced singer’s music into something even more eccentrically entertaining. Accompanied by the deadpan New Cackle Sisters, L’orchestre revel in “the vaudeville and Weimar cabaret elements of Waits’s work while possessing the slapstick vim of a Saturday morning kids’ TV show” (*The Guardian*).

YOU’LL ALSO LIKE

- Dead Dog in a Suitcase*, p28
- The God that Comes*, p38

MUSIC
CABARET

WHEN

THU 17 –
SAT 19 MAR, 8PM

WHERE

SHED 6

TICKETS

EARLY BIRD A\$59
A\$69

DURATION

1HR 40MINS
(INC INTERVAL)

PARTNERED BY



IMAGES (FROM TOP): GUILLAUME D CYR/ MAREEA VEGAS

SORCERESS IMAGE: JULIANA VAN KAMPEN

SORCERESS

(New Zealand)



“MY CAR RUNS ON SORCERESS”

DJ FITCHIE OF FAT FREDDY’S DROP

Sorceress (formerly Funkcommunity) were founded by vocalist Rachel Fraser and producer Isaac Aesili in 2011 and have since evolved into one of the most widely respected soul and electronica acts in New Zealand.

After establishing an international following with debut album *Chequered Thoughts*, they explored new directions in synth-based jazz textures and subterranean basslines on sophomore release *Dose*. Rest assured, they’ll put a spell on you.

MUSIC

WHEN

TUE 15 MAR, 8PM

WHERE

SHED 6

TICKETS

EARLY BIRD A\$39
A\$45

WITH SUPPORT FROM



YOU’LL ALSO LIKE

- Le Grand Continental*®, p10
- Jazz at Lincoln Center Orchestra*, p18

BOTH SIDES NOW JULIA DEANS SINGS JONI MITCHELL

(New Zealand)



Fresh from her success in Silo Theatre’s sultry *Brel*, Julia Deans turns to the Joni Mitchell songbook in this stunning show directed by Shane Boshier. From fronting Fur Patrol to collaborating with supergroup The Adults, Deans has a voice that switches effortlessly between honey-sweet falsetto and menacing growl.

Originally commissioned by Auckland Live and premiered at the Auckland International Cabaret Season in 2014.

YOU’LL ALSO LIKE

- Suffan Stevens*, p22
- The God that Comes*, p38

PARTNERED BY

SUNDAY STAR★TIMES

MUSIC
CABARET

WHEN

FRI 11 –
SAT 12 MAR, 8PM
SUN 13 MAR, 6PM

WHERE

SHED 6

TICKETS

EARLY BIRD A\$59
A\$69

DURATION

1HR 30MINS
(NO INTERVAL)

ARTIST TALK

SUN 13 MAR, SEE P80

WITH SUPPORT FROM



THE MODERN MĀORI QUARTET

(New Zealand)



Suit up for a night filled with waiata, wit and downhome warmth, when the boys bring you their fresh take on the classic Māori showband. This multi-talented foursome have a magnetic presence on stage that’ll have you melting like golden syrup on hot fried bread. Their latest cabaret show puts the quartet’s stamp on Kiwi classics and some of today’s biggest hits.

YOU’LL ALSO LIKE

- Dead Dog in a Suitcase*, p28
- The God that Comes*, p38

MUSIC

CABARET

PARTNERED BY

THE DOMINION POST

WITH SUPPORT FROM



WHEN

WED 16 MAR, 8PM

WHERE

SHED 6

TICKETS

EARLY BIRD A\$49
A\$59, CHILD \$19

DURATION

1HR 15MINS
(NO INTERVAL)

ON THE ROAD

PARAPARAMU, 18 MAR
MASTERTON, 19 MAR
LOWER HUTT, 20 MAR
SEE P78



IMAGE: NANDA ORMOND

THE CONTACT FESTIVAL PLAYGROUND

FAMILY FREE

7 YOU'LL ALSO LIKE

For the Birds, p24

Chalk About, p66

To celebrate the Festival's 30th birthday, we're building Wellington a fantastical family fairground perfect for anyone young at heart.

ARQUITECTURA DE FERIA

ANTIGUA I BARBUDA

(Spain)

Come on, Dad, put your shoulder to the wheel! Mum, keep pedalling! Arquitectura de Feria is a Catalan fairground No. 8 wire-style, with seven fantastical hand-cranked rides put together from recycled material and scrap iron. A merry-go-round made of motorbikes. A ferris wheel where kids are propelled around on toilet bowls. And swinging chairs where the grown-ups can rest easy after the rides, which all run on old-fashioned parent-power. The company Antigua I Barbuda's actors will be on site to fuel the surreal atmosphere of celebration.

WHEN: SAT 27 FEB — SAT 19 MAR
(EXCEPT MONDAYS), 2PM — 10PM
WHERE: FRANK KITTS PARK

PARTNERED BY:

Contact

WITH SUPPORT FROM:

WELLINGTON AMENITIES FUND

FLY ME UP TO WHERE YOU ARE NEW ZEALAND

TIFFANY SINGH

(New Zealand)

Each of the 14,000 flags in Tiffany Singh's award-winning installation expresses the hopes and dreams of a child somewhere in New Zealand. Singh has been working with schoolchildren from Wellington, Auckland and Christchurch since 2012, helping them turn their ideas into vibrant images.

Around the Playground you will see flags from all three cities, flying together for the first time.

After the Festival, they will continue their journey to the Himalayas, where, as a collective offering of peace from New Zealand, they will join the millions of Buddhist "prayer flags" that inspired the project.

WHEN: SAT 27 FEB — SAT 19 MAR
WHERE: FRANK KITTS PARK
ARTIST TALK: SUN 28 FEB, SEE P80

WITH SUPPORT FROM:

creative.nz
ARTS COUNCIL OF NEW ZEALAND TOI AOTIAROA

COME AND GET YOUR KAI ...

To complete your Contact Festival Playground experience, and to make sure the kids don't go hungry, head for the many yummy offerings in the food truck park provided by our friends at Wellington on a Plate.

CHALK ABOUT

CURIOUS SEED

(United Kingdom)

Start in the playground, go anywhere ... Revel in the creativity of this highly inventive show for kids and their families where performers Christine and Niels take the old

playground game of making chalk outlines (kids are invited to help) and turn it into a playful, funny and sometimes moving look at how we fill in the outlines of each other's identities.

Originally created by Christine Devaney & Leandro Kees (Performing Group).

➤ YOU'LL ALSO LIKE

For the Birds, p24
Cornelia Funke, p70



FAMILY
THEATRE
DANCE

WHEN

TUE 1 –
WED 2 MAR, 6PM
FRI 4 MAR, 6PM
SAT 5 –
SUN 6 MAR, 1PM

WHERE

HANNAH
PLAYHOUSE

TICKETS

EARLY BIRD GA\$45
GA\$49
CHILD \$19

DURATION

50MINS

ON THE ROAD

GREYTOWN, 8 MAR
UPPER HUTT, 9 MAR
PORIRUA, 10 MAR
SEE P78

"SOME OF THE MOST BRILLIANTLY
IMAGINATIVE, HUMOROUS, TOUCHING
THEATRE I HAVE SEEN THIS YEAR"

THE TIMES

PARTNERED BY

stuff.co.nz

WITH SUPPORT FROM



WAVES

ALICE MARY COOPER

(Australia/United Kingdom)

We know it as the "butterfly stroke" but to Elizabeth Moncello growing up on Australia's Gabo Island in the 1930s it was the "dolphin". So reveals Alice Mary Cooper, who with highly expressive storytelling brings us the unofficial history of how Liz invented the butterfly/dolphin with the help of fish, penguins and other aquatic friends.

Waves is about a lonely girl finding the courage to do something astonishing. It is funny, moving, and equally absorbing for children and adults.

Presented in association with Auckland Arts Festival.

➤ YOU'LL ALSO LIKE

The ACB with Honora Lee, p39
Sally Gardner, p70

FAMILY
THEATRE

WHEN

SAT 5 MAR, 2PM
AND 7PM

WHERE

CIRCA TWO

TICKETS

EARLY BIRD A\$39
A\$49, CHILD \$19

DURATION

50MINS

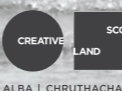
ON THE ROAD

OTAKI, 2 MAR
CARTERTON, 3 MAR
SEE P78

PARTNERED BY



WITH SUPPORT FROM



WRITERS WEEK

TUESDAY 8 MARCH – SUNDAY 13 MARCH

The New Zealand Festival once again brings some of the smartest, most eloquent and entertaining people from home and abroad to Wellington for the week.

Join the conversation as they talk about their work, their lives and the world around them. Novelists of every hue, be it literary, graphic, sci-fi or fantasy; children's writers and illustrators; poets; memoirists;

historians; scientists; journalists ... there is someone for everyone here.

The full Writers Week brochure, with further announcements, is launched on Thursday 28 January. Pick up your copy from Unity Books, libraries and other bookshops and outlets nationwide, or go to festival.co.nz.

MIRANDA JULY: LOST CHILD! ➤

(United States)

Part artist lecture, part interactive performance, this one-off New Zealand show spans Miranda July's journey from fledgling artist in Portland, Oregon, to award-winning film-maker and bestselling author.

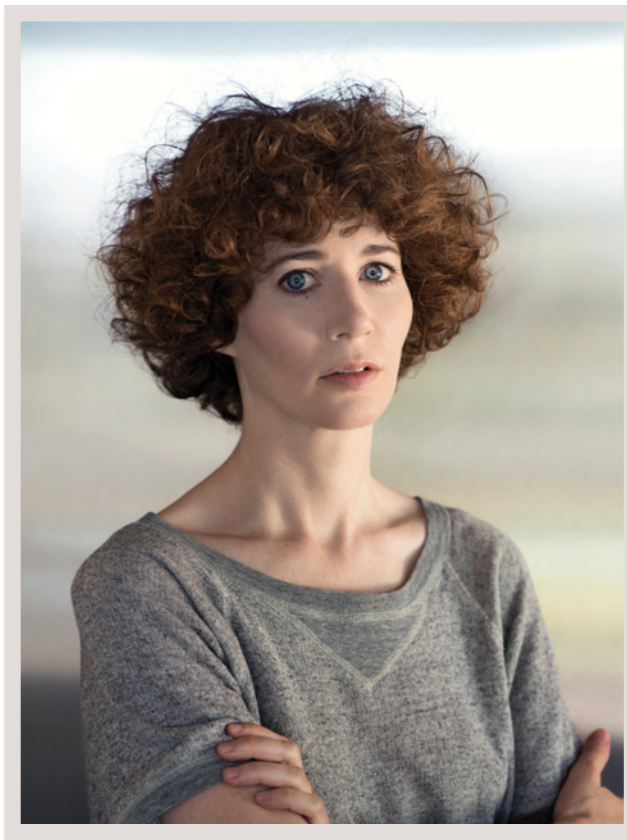
July's film *Me and You and Everyone We Know* (2005) won the Camera d'Or at the Cannes Film Festival and a Special Jury Prize at Sundance. Her short-story collection, *No One Belongs Here More Than You* (2008), won the prestigious Frank O'Connor International Short Story Award and is published in 23 countries.

Her writing has appeared in *The New Yorker*, *The Paris Review* and *Harper's*, and her debut novel, *The First Bad Man*, was an immediate *New York Times* bestseller. July's artworks include the website *Learning to Love You More* (with Harrell Fletcher) and the messaging app *Somebody*, which gets strangers to deliver your messages in person.

Like so much of July's work, *Lost Child!* will test your perceptions of art, literature and most likely yourself.

"JULY HAS A RARE ABILITY TO PIN DOWN PEOPLE'S FAULTS, FRAILTIES, AND ECCENTRIC COMPULSIONS, RATHER THAN SQUIRM FROM THEM – AND THEN TO MAKE US LOVE THEM ANYWAY"

THE INDEPENDENT



WHEN: WED 9 MAR, 6PM

WHERE: OPERA HOUSE

TICKETS: EARLY BIRD A\$59
A\$69

DURATION: 1HR 20MINS
(INC 20MIN Q&A)

Presented in partnership with The Wheeler Centre and Sydney Opera House.

PARTNERED BY:

NEW ZEALAND LISTENER

WITH SUPPORT FROM:



DO NO HARM: LIFE, DEATH AND BRAIN SURGERY

HENRY MARSH

(United Kingdom)

Neurosurgery “has met its Boswell”, Ian McEwan said of Henry Marsh and his bestselling *Do No Harm: Stories of Life, Death, and Brain Surgery*. The memoir featured on many writers’ “books of the year” list and its admirers range from Bill Bryson to Karl Ove Knausgaard.

Marsh is a pioneer of operating on brain tumours under local anaesthetic. In *Do No Harm*, he opens up about the fierce joy of operating, his hatred of hospitals, and the profoundly moving

triumphs and sometimes tragic consequences of operating on the human brain.

He has a roguish reputation for being outspoken. His preferred attire for cycling is a cowboy hat and boots. His leisure pursuits include carpentry and beekeeping and his surgery is the subject of two major BBC documentaries, including *The English Surgeon* (2009), about his decades of work in the former Soviet Union.

Join us for a unique glimpse into Marsh’s world.

Presented in association with the New Zealand Health Quality & Safety Commission’s Open Forum: International Speaker series.



WHEN: TUE 8 MAR, 6PM

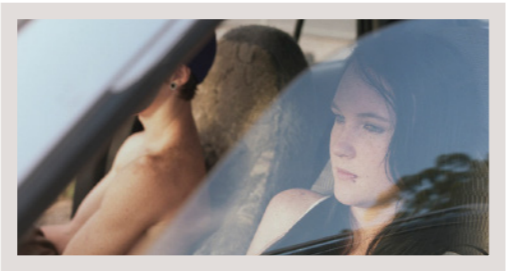
WHERE: MICHAEL FOWLER CENTRE

TICKETS: **EARLY BIRD A\$39**
A\$49

DURATION: 1HR 15MINS

PARTNERED BY:

NEW ZEALAND **LISTENER**



A CIRCLE OF LAUREATES

Join New Zealand Poets Laureate Jenny Bornholdt, Michele Leggott, Bill Manhire, Cilla McQueen, Vincent O’Sullivan, Elizabeth Smither, CK Stead (current holder of the position, pictured), Brian Turner and Ian Wedde for an evening of poetry.

WHEN: FRI 11 MAR, 7PM

WHERE: NATIONAL LIBRARY

TICKETS: \$20

DURATION: 2HRS

A National Library of New Zealand and Te Mata Estate event.



PHOTOBOOK NEW ZEALAND

See a special collection of New Zealand and Australian photobooks from artists and independent publishers. There are opportunities to browse and buy and have the photographer sign your book. Visit photoforum-nz.org/photobooknz to check out the free programme of speakers and panel discussions.

Speakers include: Ying Ang, who will discuss the making of her prize-winning book, *Gold Coast* (pictured); Ron Brownson, Senior Curator at Auckland Art Gallery, with an illustrated introduction to local photobooks from 1875–2016; and leading photobook expert Harvey Bengé, on getting photobooks out to the world.

WHEN: FRI 11 – SUN 13 MAR

WHERE: COLLEGE OF CREATIVE ARTS, MASSEY UNIVERSITY

FREE

HIGH TEA: THE ROGER HALL ROAST

One of our best loved writers of popular comedy and social satire, Roger Hall (pictured), is the focus of this year’s High Tea. Dave Armstrong hosts a group of mischievous theatre practitioners who fondly roast New Zealand’s leading playwright as he celebrates 40 years of a stellar career. Expect to relish your tea and cakes alongside a blistering investigation of Hall’s accomplishments and achievements to date.

Made possible by the generous support of Playmarket and QT Museum Hotel.

WHEN: SUN 13 MAR, 3PM

WHERE: HIPPOPOTAMUS RESTAURANT, LEVEL 3, QT MUSEUM HOTEL

TICKETS: \$79

DURATION: 1HR 30MINS



SAVE WITH A MULTI-PASS

All passes give you a place at the front of the queue with the full Writers Week programme delivered to your letterbox or inbox and a preferential booking period from 29 January until 4 February.

THE FRIDAY OFF WORK PASS

Take Friday off work; come with an open mind, leave with a buzzing brain. You’ll be inspired by top international writers and speakers talking on a range of topics. Pass includes six sessions at the Embassy and BATS theatres, plus a free coffee and a packed lunch.

\$110

THE TAKE FIVE PASS

A great little deal offering five tickets to Writers Week sessions at the Embassy and BATS theatres.

\$75

THE BOOKMARK PASS

The ultimate pass offering 15 tickets to Writers Week sessions at the Embassy and Bats theatres, with 36 events to choose between. Or use your pass for multiple tickets to each event, so you can share the experience with someone else.

\$200



SPOTLIGHT ON PLAYWRIGHTS

It’s Circa’s 40th birthday and in true Circa tradition New Zealand playwrights are centre stage. Circa will celebrate the 100+ New Zealand playwrights whose work has captivated audiences over the years: from Roger Hall’s first play, *Glide Time*, in 1976 to Kate De Goldi’s *The ACB with Honora Lee* adapted for the stage by Jane Waddell in 2016 (see page 39). There will be events, stimulating panel discussions, and a reading of *funnygirl* by Anthony McCarten (pictured), in which he dramatises his explosive novel – a plea for tolerance and freedom for individuals and art.

WHEN: FRI 11 – SUN 13 MAR

WHERE: CIRCA THEATRE

WRITERS WEEK SUPPORTERS

THE LION FOUNDATION
Here for good

QT
MUSEUM WELLINGTON

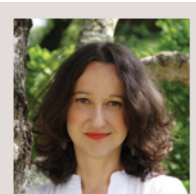
VICTORIA
UNIVERSITY OF WELLINGTON
TE WHARE WŪANANGA
O TE HĪKAO O TE IKA A MŪKI

creative
ARTS COUNCIL OF NEW ZEALAND / TE AO HĀTEARA

Writers Week is supported by Arts Access Aotearoa, Asia New Zealand Foundation, Australia Council for the Arts, Australian High Commission, Canada Council for the Arts, Centres of Research Excellence, Circa Theatre, Creative New Zealand, Embassy of France, Embassy of the United States of America, Goethe-Institut, Lion Foundation, National Library of New Zealand, New Zealand Book Council, New Zealand Health Quality & Safety Commission, *New Zealand Listener*, Playmarket, QT Museum Hotel, Royal Society of New Zealand, Unity Books, and Victoria University of Wellington.

THE INTERNATIONALS

A taste of some of the overseas authors joining the many New Zealanders appearing at Writers Week in 2016.

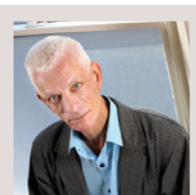


MURIEL BARBERY

(France)

Muriel Barbery's novel *The Elegance of the Hedgehog* has sold over five million copies worldwide. Her latest novel, *The Secret Life of Elves*, will be

released in Australia and New Zealand in March 2016. It picks up many of the themes from Barbery's previous work: the beauty in everyday things, the transformative influence of art and literature, and the power of love. See *On The Road*, p79.

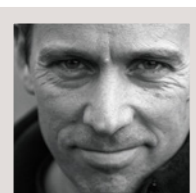


ROBERT DESSAIX

(Australia)

With books such as *Night Letters* and *Twilight of Love: Travels with Turgenev*, Robert Dessaix is one of Australia's finest writers. In his fiction

and non-fiction, he takes events from his own life to explore wider themes of travel, religion, love in its various forms and what a good life is. His latest memoir, *What Days Are For*, growing out of a serious brush with death, is vintage Dessaix.

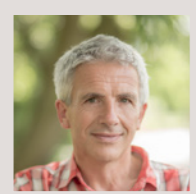


JASPER FFORDE

(United Kingdom)

If anyone knows how to write a page-turning intertextual fantasy novel, it's Jasper Fforde, and readers who enjoy a farce but haven't

discovered him yet are in for a treat. Critics compare him to Douglas Adams and fans hold a regular festival, the Fforde Ffiesta. With four series on the go, he will be joining us on the publication of his first standalone novel.

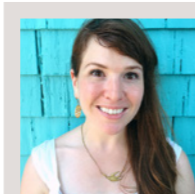


PATRICK GALE

(United Kingdom)

Patrick Gale's many novels since his brilliantly titled 1985 debut, *The Aerodynamics of Pork*, are known for their acuity coupled with heart

and soul. Combining family history with a personal story to tell, his latest novel, *A Place Called Winter*, follows across the Canadian prairies a man eventually confronted with the question of his own identity.

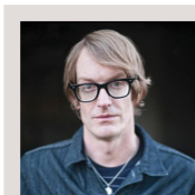


KATE BEATON

(Canada)

Kate Beaton started her web-comic, *Hark! A Vagrant*, in 2007 and is possibly the only cartoonist to have been published by both *The New*

Yorker and Marvel Comics. She's enjoyed for her ability to reimagine characters and situations with an alternative, often witty, always insightful perspective. Her latest venture is a children's book, *The Princess and the Pony*.

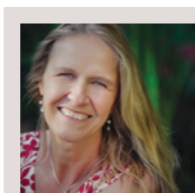


PATRICK deWITT

(Canada)

Dysfunctionality, greed, violence: if these words scare you, turn away now. Canadian novelist Patrick deWitt isn't afraid of the hard stuff,

and his novels, packed with pithy prose and aphorisms, are exacting but rewarding reads. His latest, *Undermajordomo Minor*, has been compared to a Wes Anderson film and is a dark but comic flight of fancy.

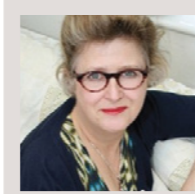


CORNELIA FUNKE

(Germany)

Cornelia Funke — aka the “JK Rowling of Germany” — writes magical narratives that have been delighting children of all ages for

more than 20 years, particularly now *The Thief Lord*, *Inkheart* and the *Ghosthunters* series are movies. As well as keeping younger audience members spellbound, Funke will talk about how her early career as a children's social worker has influenced her. She joins us courtesy of the Goethe-Institut.



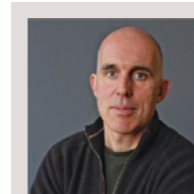
SALLY GARDNER

(United Kingdom)

A hero for misfits, rascals and dyslexics, Sally Gardner is a multi-award-winning children's author whose mission is to wake

people up about kids with learning difficulties, and provide stories that appeal to those whose worldview is slightly different — just like her own. A dyslexic herself, and deemed unteachable at school, she has written books for children of all ages and been translated into more than 22 languages.

Among the Kiwi contingent you can expect during Writers Week are: author and illustrator Paul Beavis; raconteur, columnist and now novelist Joe Bennett; much loved children's author Joy Cowley; banned author Ted Dawe; Waitangi Tribunal member, historian and poet Aroha Harris; World Adventure Racing Champion Nathan Fa'ave; librettist, playwright, screenwriter and author Witi Ihimaera; fiction

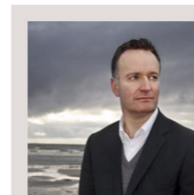


CHRISTOPHER McDOUGALL

(United States)

As a foreign correspondent, Christopher McDougall covered wars in Rwanda and Angola before

becoming inspired to write one of the world's most acclaimed books on running, *Born to Run*. Next, the stories of World War II resistance fighters caught his attention, and he explores their extraordinary feats of endurance in his second book, *Natural Born Heroes*.

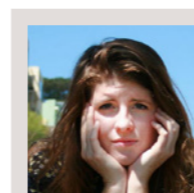


ANDREW O'HAGAN

(United Kingdom)

From being an editor-at-large at *Esquire* magazine and contributing editor of the *London Review of Books* to ghost-writing Julian

Assange's never-materialised memoir, Andrew O'Hagan is not afraid to get his teeth into challenging, contemporary subjects. His latest novel, *The Illuminations*, was longlisted for the 2015 Man Booker Prize and, like many of his books, is an original enquiry into the human experience.

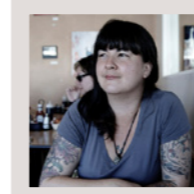


MALLORY ORTBERG

(United States)

Earlier this year, *Forbes* magazine named Mallory Ortberg one of the “new guard” of media makers, influencers and game changers

in its annual “30 under 30” list. She's an outspoken, vital voice online and co-founder of the website *The Toast*. Her first book, *Texts from Jane Eyre*, reimagines conversations between literary characters as though they were occurring by text in contemporary time.



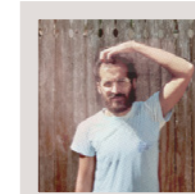
MARIKO TAMAKI

(Canada)

Staunch and original, Mariko Tamaki is an artist and writer best known for her graphic novel *Skim*, a collaboration with her cousin Jillian

Tamaki. Like much of her work, it centres on adolescence, being a misfit, and the awkwardness and confusion of the teenage years. Tamaki confronts bravely yet sensitively issues such as self-harm, suicide, sexual orientation, taboo relationships and relationships in general.

writer and creative writing teacher Paula Morris; writer and performer Courtney Sina Meredith; science historian Rebecca Priestley; bestselling novelist and sector advocate Catherine Robertson; and poet and Man Booker Prize-longlisted novelist Anna Smaill.

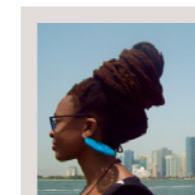


ANIS MOJGANI

(United States)

Anis Mojgani is a prince in the spoken word and slam poetry movement, a two-time US National Poetry Slam Champion, with a particularly

engaging and uplifting style. When he appeared in New Zealand in 2014, he won many hearts and minds, and we're delighted to be bringing him back, in association with his previous presenters, WORD Christchurch and Golden Dawn in Auckland. See *On The Road*, p79.



NNEDI OKORAFOR

(United States/Nigeria)

Nnedi Okorafor's African-based science fiction, fantasy and magical realism is stark and evocative, tackling political and philosophical

issues. Her novel *Lagoon* was a finalist in the British Science Fiction Awards. In a genre not bursting with women of colour, Okorafor is a leader and inspiration, and someone to read for those who feel alienated by other science fiction.

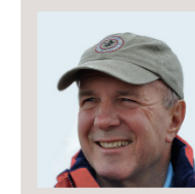


ADAM RUTHERFORD

(United Kingdom)

With a background in genetics and evolutionary biology, Adam Rutherford is a contributor to *The Guardian*, presenter of BBC Radio's *Inside*

Science, an award-winning documentary maker, and author of an ambigram book, *Creation: The Origin of Life/The Future of Life*. As a science adviser, his movie credits include *World War Z* and *Ex Machina*. He appears courtesy of the Royal Society of New Zealand and Centres of Research Excellence.



SIMON WINCHESTER

(United Kingdom)

With 25 books to his name, Simon Winchester is a maven of popular narrative history. He is renowned for his books on subjects

such as the eruption of Krakatoa and the creation of the *Oxford English Dictionary*. His more recent works include *Atlantic* and now *Pacific*, where he once again marries scholarship with a remarkable gift for storytelling. See *On The Road*, p79.



**PROUDLY
LIGHTING UP
THE NIGHT
WITH FLIGHT**

THE WELLINGTON AIRPORT
SEASON OF **FOR THE BIRDS**



VISUAL ARTS



RIVER OF FUNDAMENT

WRITTEN AND DIRECTED BY MATTHEW BARNEY, MUSIC
COMPOSED AND DIRECTED BY JONATHAN BEPLER

(United States)

River of Fundament is New York-based artist Matthew Barney's latest feature film. The director and creator of ground-breaking series *The Cremaster Cycle* is described by *The Daily Telegraph* as the "visionary artist and film-maker ... behind some of the most arresting, strange and beautiful images of our time".

Barney's nearly six-hour epic is a cinematic adaptation of Norman Mailer's novel *Ancient Evenings*. It combines narrative-based cinema with filmed elements of performance, sculpture and theatre. In collaboration with composer Jonathan Bepler, Barney reimagines Mailer's hypersexualised story of Egyptian gods and the seven stages of reincarnation as a seven-act opera within a backdrop of the rise and fall of the American car industry.

With sets including a replica of Mailer's Brooklyn apartment, and featuring Maggie Gyllenhaal, Paul Giamatti, Elaine Stritch and Ellen Burstyn, this intense, multidimensional experience is a sprawling allegory of death and rebirth.

Produced by Matthew Barney and Laurenz Foundation.

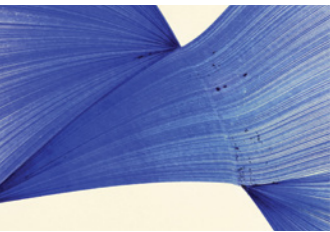
This exclusive New Zealand screening has been organised and facilitated by the Adam Art Gallery Te Pātaka Toi at Victoria University of Wellington.

Image: Matthew Barney and Jonathan Bepler, *River of Fundament*, 2014, production still, © Matthew Barney, photo by Hugo Glendinning.

FILM

WHEN: SAT 19 MAR, 6PM
WHERE: EMBASSY THEATRE
TICKETS: **EARLY BIRD A\$45**
AND STUDENT A\$35
A\$49, STUDENT A\$39
DURATION: 5HRS 52MINS
(PLUS TWO 30MIN
INTERMISSIONS)

Strictly 18+ Contains explicit
content that may cause offence.



LINIE LINE LINEA — CONTEMPORARY DRAWING

Curated by Volker Adolphs at Kunstmuseum Bonn, this exhibition features 20 contemporary artists working in Germany, who explore different approaches to drawing. A New Zealand exclusive.

Presented with support from ifa Institut für Auslandsbeziehungen and Goethe-Institut Wellington.

Image: detail, Thomas Müller, *Untitled*, 2008, ballpoint pen on paper, 297 x 210cm. Courtesy of the artist.

WHEN: FRI 26 FEB — SUN 20 MAR
WHERE: ADAM ART GALLERY
FREE



UNSEEN CITY: GARY BAIGENT, RODNEY CHARTERS AND ROBERT ELLIS IN SIXTIES AUCKLAND

In the 1960s, as new motorways enabled suburban sprawl, Auckland’s population passed half a million. This show is a snapshot of that moment, in photography, film and painting.



Gary Baigent’s 1967 Auckland photobook, *The Unseen City*, with its gritty aesthetic and bohemian attitude, was an antidote to the saccharine local picture books at the time.

Rodney Charters’ 1966 Auckland road movie, *Film Exercise*, features Queen St nightlife and a soundtrack by the La De Da’s.

Robert Ellis’s drawings show how his famous *Motorway* paintings were grounded in his experience of his newly adopted city.

A joint project with Te Uru, Titirangi.
Image: detail, Gary Baigent, *John Carlaw, David Brady, Donald Gifford and Samantha Groves, Kiwi Tavern, 1969*. Courtesy of the artist and Peter McLeavey Gallery, Wellington.

WHEN: SAT 21 NOV 2015 — SUN 13 MAR 2016
WHERE: CITY GALLERY WELLINGTON
FREE

JULIAN DASHPER AND FRIENDS

Julian Dashper died in 2009, aged 49. This show offers a tribute to this key New Zealand artist. Dashper made art about art. Some works were perverse homages to other artists, others addressed the workings of the art business. From the mid-1990s, he increasingly exhibited overseas.

Today, he represents a transitional figure between the “New Zealand painting” that preceded him and the post-national, post-medium contemporary art that followed. As Dashper’s works were in dialogue with art history, this show presents works in conversation with works by other artists, including Colin McCahon, Rita Angus, Milan Mrkusich, Gordon Walters and Billy Apple.

WHEN: SAT 5 DEC 2015 — MON 25 APR 2016
WHERE: CITY GALLERY WELLINGTON
FREE

Image: Julian Dashper, *The Colin McCahons, 1992*. Chartwell Collection, Auckland Art Gallery Toi o Tāmaki 2001.



CAMILLE HENROT: GROSSE FATIGUE

French artist Camille Henrot’s encyclopaedic video *Grosse Fatigue* (2013) takes on the history of the universe. Henrot mashes scientific history and creation stories, the rational and the mythic, computers and primitive mindsets. Still and moving images appear in overlapping pop-up windows as if on a computer screen, suggesting that a vast database underpins the work. Henrot was awarded the Silver Lion for *Grosse Fatigue* when it debuted in the 2013 Venice Biennale.

Image: detail, Camille Henrot, *Grosse Fatigue*, 2013. Courtesy of the artist, Silex Films and Galerie Kamel Mennour, Paris.

WHEN: SAT 21 NOV 2015 — SUN 13 MAR 2016
WHERE: CITY GALLERY WELLINGTON
FREE



NGĀ TOI / ARTS TE PAPA

During the Festival, Te Papa is hosting a vibrant season of *Ngā Toi | Arts Te Papa* — the museum’s ever-changing showcase of works drawn from the national art collection.

A highlight is *New Zealand Photography Collected*, an exhibition that showcases hundreds of Te Papa’s rare and fascinating photographs, including works by luminaries such as Alfred Burton, Brian Brake, Marti Friedlander, Laurence Aberhart, Anne Noble and Gavin Hipkins.

It coincides with a lavish new book from Te Papa Press, *New Zealand Photography Collected*, written by Te Papa curator Athol McCredie.

Image: Marti Friedlander, *Tony Fomison, 1977-79*, black and white photograph, gelatin silver print. Purchased 2007, Te Papa.

WHEN: FRI 6 NOV 2015 — AUG 2016
WHERE: TE PAPA
FREE

DREAMWORKS ANIMATION: THE EXHIBITION

From the studio that brought you *Shrek*, *Madagascar* and the awesome *Kung Fu Panda* comes an exhibition exclusive to Te Papa: a celebration of 20 years of DreamWorks Animation.

It includes rare concept drawings, models, interviews and original artworks. Get creative with the immensely popular Animation Desk interactive, and enjoy the immersive Dragon Flight experience from *How to Train Your Dragon*.

Exhibition developed by the Australian Centre for the Moving Image (ACMI) and DreamWorks Animation.

Image: *Madagascar*, 2005, artist Craig Kellman. ©2015 DreamWorks Animation LLC. All Rights Reserved.



WHEN: SAT 12 DEC 2015 — MON 28 MAR 2016
WHERE: TE PAPA
TICKETS: ADULTS \$15, CHILDREN \$6



LIU JIANHUA

From the Venice Biennale to The Dowse Art Museum. One of China’s best known contemporary artists, Liu Jianhua will present two full-gallery installations: a signature work of over 1,500 everyday objects cast in white porcelain, and a new work of glistening pools of gold-coated porcelain.

Image: detail, Liu Jianhua, *Regular Fragile* installation view at Venice Biennale, 2003.

WHEN: SAT 20 FEB — SUN 10 JUL
WHERE: THE DOWSE ART MUSEUM, LOWER HUTT
FREE



SHAPESHIFTER SCULPTURE 2016

Shapeshifter Sculpture returns to Lower Hutt’s beautiful public gardens. Enjoy the experience of wandering through the gardens encountering sculptures by emerging and established New Zealand artists. All works for sale. Picnickers welcome.

Image: Courtesy of *Shapeshifter*.

WHEN: FRI 26 FEB — SUN 20 MAR
WHERE: LOWER HUTT CIVIC AND RIDDIFORD GARDENS
TICKETS: SEE SHAPESHIFTER.ORG.NZ FOR DETAILS



▲
**DAVID BURNETT:
THE PRESIDENTS —
FROM JFK TO
OBAMA**

Award-winning American photojournalist David Burnett is one of the few photographers to have photographed all US Presidents since John F Kennedy. From iconic statesmen such as JFK, to Richard Nixon’s downfall, and the significance of Barack Obama’s election, these historical moments have reverberated around the world. Spanning five decades, Burnett’s images are markers of time and provide an

up-close and unique perspective. Toured by The Australian Centre for Photography, this is the first time these images have been exhibited in New Zealand.

With support from the Embassy of the United States of America.

Image: David Burnett, *Ronald Reagan and Soviet Premier Mikhail Gorbachev, with their interpreters, during their first summit, Geneva, 1985*. Courtesy and © of the artist.

WHEN: SAT 20 FEB – SUN 15 MAY
WHERE: EXPRESSIONS, UPPER HUTT
FREE



▲
**GEORGE NUKU:
BOTTLED OCEAN 2116**

Bottled Ocean 2116 presents an expansive translucent double-hulled waka. Floating in space, it is surrounded by imagined creatures of the deep created from recycled plastics. *Bottled Ocean 2116* acts as both a vessel of hope and warning for the future.

Image: George Nuku, *Bottled Ocean 2114*, Installation at the Taipei Contemporary Art Center, Taiwan. Photo by Reinhart Cosaert.

WHEN: SUN 21 FEB – SUN 15 MAY | **WHERE:** PĀTAKA ART + MUSEUM, PORIRUA | **FREE**

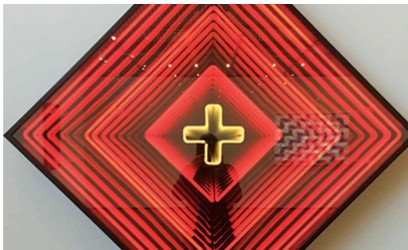


▲
**ADAM PORTRAITURE
AWARD 2016**

Showcasing the enormous range of contemporary portraiture in New Zealand, this is the country’s premier portrait competition. The winner will be judged by Mette Skougaard, Director of the Det Nationalhistoriske Museum Frederiksborg Slot, Denmark. You can be the judge too, as your vote will help decide the People’s Choice Prize.

Image: detail, Henry Christian-Slane, *Tim*, oil on canvas, winner of the 2014 Adam Portraiture Award. Collection New Zealand Portrait Gallery.

WHEN: THU 25 FEB – SUN 29 MAY
WHERE: NEW ZEALAND PORTRAIT GALLERY
FREE



▲
**BOB JAHNKE: ATA:
A THIRD REFLECTION**

‘Ata’ in te reo Māori references artistic concerns such as reflection, form, light and shadow, but also refers to the act of deliberation. Professor Robert Jahnke’s *Ata* explores Māori creation narratives and Christian and prophetic imagery through light and reflection.

Image: detail, Bob Jahnke, *Navarro patiki*, 2015. Courtesy of the artist.



▲
**KELCY TARATOA:
PRIVACY VS
PATRIOTIC IDEALISM**

The loss of privacy through online monitoring and public surveillance has created a culture of Orwellian fear and paranoia. Kelcy Taratoa’s latest series of paintings grapples with pop-culture referents to unpack these anxieties.

Image: detail, Kelcy Taratoa, *Zoom In*, 2015. Courtesy of the artist.



▼
**THE BURDEN
OF DREAMS:
MARGRIET
WINDHAUSEN
AND PAUL
VAN DEN BERGH**

Margriet Windhausen and Paul van den Bergh both gained their art training in the Netherlands, and have been practising artists in New Zealand for 40 years. While reflecting modernist and surrealist art influences, they each have a unique voice in which the human figure becomes a vehicle for dreaming.

Also showing: *Frances Hodgkins & Petrus van der Velden* in *The Field Collection*.

Images: Margriet Windhausen, *Head of a Young Woman (2)*, 2008, polychrome terracotta, courtesy of the artist; Paul van den Bergh, *The Burden of Dreams*, pencil drawing, 1985, courtesy of the artist.

WHEN: FRI 26 FEB – SUN 3 APR | **WHERE:** MAHARA GALLERY, WAIKANAE | **FREE**



▲
**ONCE THERE WAS A TREE:
ANDREA GARDNER**

Andrea Gardner explores the tension between domesticity and nature, artifice and reality, the familiar and the unexpected. She investigates how we perceive nature in a contemporary context and the ever-growing presence of man-made elements in the environment. In many of her photographs nature is depicted as an image: to be reproduced, hung on the wall, worn or looked at in a book.

Image: detail, Andrea Gardner, *Once There Was a Tree*, 2014, digital photograph. Courtesy of the artist.



▲
**FEATHERSTON
CAMP CENTENARY
EXHIBITION:
1916-2016**

An estimated 60,000 men went through Featherston Military Training Camp between 1916 and 1918 – a majority of the New Zealanders who served overseas during World War I. This exhibition tells their story.

Image: detail, a snow fight at Featherston Camp in July 1918. Courtesy of Aratoi.

WHEN: SAT 23 JAN – SUN 31 JUL
WHERE: ARATOI WAIRARAPA MUSEUM OF ART AND HISTORY, MASTERTON



▲
**ART FROM
THE HEART**

Artists and crafts people show work that expresses who they are and their approach to making art, including work they are deeply involved with now and special pieces from their collections. Their process will be illustrated via sketches, items of support, and writings about the concept.

Image: detail, Suzanne Herschell, *Wetlands*, 2015. Courtesy of the Artist.

WHEN: SAT 20 FEB – MON 16 MAR
WHERE: ACADEMY GALLERIES
FREE



▲
THE ATTIC

In this new permanent exhibition space, you can experience *Ngā Hau*, which combines installation art and the magic of cinema. Venture into a land where Moa roam ancient forests; soak up the culture on the city’s most vibrant street; and see how the capital has developed over the years. All through intriguing and personal stories narrated by our forebears.

Image: courtesy of Wellington Musuem.

WHEN: FROM LATE 2015
WHERE: WELLINGTON MUSEUM
FREE

➤ **YOU’LL ALSO LIKE**

Other galleries to check out during the Festival:

Bartley + Company Art

Bowen Galleries

Enjoy Public Art Gallery

Hamish McKay Gallery

Page Blackie Gallery

Peter McLeavey Gallery

ROAR! Gallery

Solander: Works on paper

{Suite}

30upstairs

Thistle Hall

FESTIVAL
ON THE ROAD

Artists from around the world venture out during the Festival to the greater Wellington region



CHALK ABOUT
CURIOUS SEED

(United Kingdom)

Join Christine and Niels as they ask some BIG questions! What makes us who we are? Is it where we are from? Or how we talk? And ... doesn't everyone like pizza? See page 66 for more.

GREYTOWN — **WHEN:** TUE 8 MAR, 7PM
WHERE: KURANUI COLLEGE

UPPER HUTT — **WHEN:** WED 9 MAR, 7PM
WHERE: THE GILLIES GROUP THEATRE AT EXPRESSIONS

PORIRUA — **WHEN:** THU 10 MAR, 7PM
WHERE: PĀTAKA ART + MUSEUM

TICKETS: EARLY BIRD GA\$35
GA\$39, CHILD GA\$18

DURATION: 50MINS

Recommended for ages 8+



ARCHIE ROACH

(Australia)

Grab a ticket to this intimate concert with a beloved Australian artist and activist: the legendary Archie Roach. More about his city show, *dirtsong*, on page 60.

PORIRUA — **WHEN:** SAT 27 FEB, 7.30PM
WHERE: PĀTAKA ART + MUSEUM

TICKETS: EARLY BIRD GA\$39
GA\$49



MURIEL BARBERY
IN CONVERSATION –
PHILOSOPHY & FICTION

(France)

Beloved by readers everywhere, *The Elegance of the Hedgehog* by Muriel Barbery sold more than five million copies. Hear the former philosophy professor in conversation about her new novel, *The Secret Life of Elves*.

WAIKANAE — **WHEN:** FRI 11 MAR, 4PM
WHERE: MAHARA GALLERY

TICKETS: GA\$19

DURATION: 1HR (FOLLOWED BY
A BOOK SIGNING)



SIMON WINCHESTER &
THE PACIFIC OCEAN

(United Kingdom)

With 25 narrative non-fiction books to his name, enjoy a discussion with former journalist Simon Winchester on the geopolitics of our region as explored in his latest work, *Pacific: The Ocean of the Future*.

MASTERTON — **WHEN:** WED 9 MAR, 7PM
WHERE: ARATOI WAIRARAPA MUSEUM OF ART AND HISTORY

TICKETS: GA\$19

DURATION: 1HR (FOLLOWED BY
A BOOK SIGNING)

WRITERS
ON THE ROAD

Read more about the Writers Week programme from page 67



THE MODERN
MĀORI QUARTET

(New Zealand)

Suit up for a fabulous evening of classic Māori showband music with a cheeky, charming twist. Featuring James Tito, Matariki Whatarau, Maaka Pohatu and Francis Kora. See page 63 for more.

PARAPARAUMU — **WHEN:** FRI 18 MAR, 7PM
WHERE: SOUTHWARD THEATRE

A return bus will depart from Otaki via Te Horo and Waikanae travelling to Southward Theatre for this performance. Book a bus seat with your ticket for an extra \$5 per person (seats are limited).

MASTERTON — **WHEN:** SAT 19 MAR, 7PM
WHERE: TOWN HALL

LOWER HUTT — **WHEN:** SUN 20 MAR, 6PM
WHERE: LITTLE THEATRE

TICKETS: EARLY BIRD GA\$35
GA\$39, CHILD GA\$15

DURATION: 1HR 15MINS (NO INTERVAL)



MIYATA-YOSHIMURA-
SUZUKI TRIO

WITH MUSIC BY SAMUEL
HOLLOWAY, DYLAN LARDELLI
AND CHRIS GENDALL

(Japan/New Zealand)

This cutting-edge fusion of East and West brings together three of New Zealand's composers with this virtuoso Japanese trio, who perform on the shō, koto and recorder. See page 56 for more.

LOWER HUTT — **WHEN:** MON 29 FEB, 7.30PM
WHERE: ST MARK'S CHURCH

TICKETS: DOOR SALES ADULTS
GA\$38, STUDENTS WITH ID GA\$10,
SCHOOLCHILDREN WITH AN ADULT FREE.
TICKETS AVAILABLE IN NEW YEAR AT
WWW.CHAMBERMUSIC.ORG.NZ

Presented by Chamber Music Hutt Valley in association with New Zealand Festival and Chamber Music New Zealand.



WAVES

ALICE MARY COOPER

(Australia/United Kingdom)

A tall story about how a young woman invented the butterfly stroke, *Waves* is about having the courage to swim against the tide of history to achieve something truly incredible. See page 66 for more.

ŌTAKI — **WHEN:** WED 2 MAR, 7PM
WHERE: CIVIC THEATRE

CARTERTON — **WHEN:** THU 3 MAR, 7PM
WHERE: EVENTS CENTRE

TICKETS: EARLY BIRD GA\$35
GA\$39, CHILD GA\$18

DURATION: 50MINS

Recommended for ages 8+



ROBERT DESSAIX
ON ENID BLYTON

(Australia)

This lecture at the Sydney Writers' Festival enchanted Writers Week Programme Manager Kathryn Carmody. Enjoy Robert Dessaix's playful description of the lasting influences of a childhood reading of Enid Blyton.

LOWER HUTT — **WHEN:** SAT 12 MAR, 7PM
WHERE: THE DOWSE ART MUSEUM

TICKETS: GA\$19

DURATION: 45MINS (FOLLOWED BY
A BOOK SIGNING)



ANIS MOJGANI
IN ACTION

(United States)

A prince in the spoken word and slam poetry movement, Anis performs with a contagious passion. Returning to Aotearoa in association with WORD Christchurch and Golden Dawn.

PAEKAKARIKI — **WHEN:** SUN 13 MAR, 2:30PM
WHERE: ST PETER'S VILLAGE HALL

TICKETS: GA\$19

DURATION: 1HR (FOLLOWED
BY A BOOK SIGNING)

ON THE ROAD
PARTNERS



- Kāpiti Coast District Council
- Ōtaki Community Board
- Porirua City Council
- Mana Community Grants Foundation
- Masterton District Council
- Hutt City Council
- Carterton District Council
- Greytown Trust Lands
- Lands Trust Masterton
- Trust House Community Enterprise
- Upper Hutt City Council



ARTIST TALKS

We love talking about art almost as much as we like experiencing it live on stage. Make the most of your lunch break and head behind the scenes to hear from some of our international and New Zealand artists. Be part of the discussion and bring your own questions, too.

Follow online with live tweets @nzfestival and #upyourarts

FREE

WHEN

LUNCHTIMES, 1 – 2PM

WHERE

ALL ARTIST TALKS TAKE PLACE UPSTAIRS AT THE ST JAMES THEATRE, UNLESS NOTED



* *Do I Belong Here* will be New Zealand Sign Language interpreted.

ART CAN CHANGE THE WORLD

Tiffany Singh discusses the role of social practice in the changing face of the arts. Hear about how she harnesses the nature and power of collaboration in her work, including her huge flag project *Fly Me Up to Where You Are New Zealand* (see page 64).

WHEN: SUN 28 FEB

BORN IN A BARN

Each Kneehigh show starts its life with a small dedicated team, who retreat to the rural isolation of the company’s Cornish barns, where they cook, keep warm, and create together. Learn more from Kneehigh’s Mike Shepherd, director of *Dead Dog in a Suitcase* (see page 28).

WHEN: MON 29 FEB

SKETCH TO STAGE

Theatre Stampede and Nightsong Productions are known for their ingenious staging of theatre works, first with the award-winning *360 – a theatre of recollections*, and now with *Te Pō* (see page 32). Find out how they brought it from sketch to stage, with designer Andrew Foster, director Ben Crowder and writer Carl Bland.

WHEN: THU 3 MAR

WHERE: SOUNDINGS THEATRE, TE PAPA

DOUBLE VISION

Composer Ross Harris and librettist Vincent O’Sullivan have enjoyed a fruitful working partnership over many years. Discover how their creative collaboration enables them to achieve a single artistic vision, and how the world premiere of their new opera, *Brass Poppies* (see page 48), came into being.

WHEN: FRI 4 MAR

DO I BELONG HERE?

Chunky Move’s brilliant *Complexity of Belonging* (see page 40) explores identity in the age of social media. The creative team behind the work, Anouk van Dijk and Falk Richter, are celebrated worldwide for making theatre that feels in and of its time. Join Anouk and some of the cast to discuss this burning topic and their extraordinary work.*

WHEN: THU 10 MAR

BEING JONI MITCHELL

Ask 10 different artists to take on Joni Mitchell’s astonishing songbook and you’d have 10 entirely different results. Director Shane Bosher and singer Julia Deans talk about how they approached it in their homage to the legendary artist, *Both Sides Now* (see page 62).

WHEN: SUN 13 MAR

BREAKING BARRIERS

Back to Back is an ensemble of people with disabilities who say they “make theatre and trouble the world”. Hear from the company as they explain how their work *small metal objects* (see page 35) questions the assumptions of what is possible in theatre, along with the assumptions we all hold about ourselves and each other.

WHEN: TUE 15 MAR

A NOVEL APPROACH

The ACB with Honora Lee author Kate De Goldi talks with Jane Waddell, who adapted the novel for Circa’s Festival production, about the process of bringing this beloved New Zealand story to life for a theatre audience. See page 39.

WHEN: WED 16 MAR

DANCING FOR YOUR LIFE

Don’t miss this rare chance to meet members of the original *Café Müller* cast. Find out what it is like to have spent a career dancing with Tanztheater Wuppertal Pina Bausch (see page 12), and to have worked with the late, great dance icon herself.

WHEN: FRI 18 MAR



THE DOMINION POST FESTIVAL AWARDS

The Dominion Post Festival Awards are where we celebrate the best of the best of the arts the 2016 Festival has brought you from New Zealand and around the world. The critics have their say and so do you – and who knows, you may even agree.

Who will it be in 2016?

CRITICS’ CHOICE

The Dominion Post critics will be reviewing hundreds of performances across the city during the Festival. On the final weekend, they’ll come together to deliberate, debate and decide the Critics’ Choice winners for 2016. Their picks will be published in *The Dominion Post* and online at dompost.co.nz.

- To receive *The Dominion Post* delivered daily to your door, subscribe today – details at dompost.co.nz.

READERS’ CHOICE

Have your say and vote for your favourite Festival show for the 2016 *Dominion Post* Readers’ Choice Award. Voting details will be published in early 2016 in *The Dominion Post*. To find out more, head to dompost.co.nz.



SCHOOLFEST

FRIDAY 26 FEB – SUNDAY 20 MAR 2016

WITH SUPPORT FROM



An extraordinary work of art experienced when you’re young stays with you for life. It can transform you and change your whole outlook on the world. So make sure you check out SchoolFest, a dynamic learning programme that gives students the chance to experience and workshop with some of the best New Zealand and international artists around.

Tickets can only be bought through schools, so talk to your teacher about how to get involved, and keep an eye out for the SchoolFest brochure in schools from early November 2015. For your own copy, contact Emma Deakin and the SchoolFest team by email schoolfest@festival.co.nz or telephone (04) 912 0406. For regular updates subscribe to our enews at festival.co.nz/schoolfest

SCHOOLFEST OFFERS

- Major discounts to Festival performances (tickets cost students \$15 for New Zealand and \$18 for international work)
- Unique workshops from world-renowned Festival performers and creatives
- Exceptional shows touring to Greater Wellington communities
- SchoolFest Writers Day
- Special schools-only performances of Festival shows, including the Jazz at Lincoln Center Orchestra’s Jazz for Young People
- Exclusive opportunities such as attending the dress rehearsal of Tanztheater Wuppertal Pina Bausch for free



FESTIVAL PEOPLE

PATRON

The Governor-General, His
Excellency Lieutenant General
The Right Honourable Sir Jerry
Mateparae, GNZM, QSO

BOARD OF TRUSTEES

Kerry Prendergast CNZM
(Executive Chair)
John Allen
Margie Beattie
Howard Greive
John Ryan
Paul Ridley-Smith
Elizabeth Kerr MNZM
Celia Wade-Brown

FESTIVAL FOUNDATION TRUSTEES

Sir John Anderson
Sir David Gascoigne
John McCay

FESTIVAL TEAM

Shelagh Magadza *Artistic Director*
Sue Paterson ONZM
Executive Director
Suzy Cain *Executive Coordinator*
Rose Blake *Reception & Administration Assistant*

MARKETING AND DEVELOPMENT

Meg Williams *Head of Marketing and Development*
Lara Signal *Marketing and Communications Manager*
Heather O'Carroll
Partnerships Coordinator
Sarah Chandler
Media Communications Advisor
Megan Duffy *Media Coordinator*
Guy Somerset *Content Editor*
Faith Wilson *Content Assistant*
Lewis Richardson *Ticketing, Marketing Special Projects*
Gary Barker *Ticketing Coordinator*
Henrietta Wallace *Project Analyst*
Matt Gleeson *Designer*

PROGRAMMING

Anna Cameron *Head of Programming*
Eva Prowse *Programme Manager*
Kathryn Carmody *Writers Week Programme Manager*
Claire Mabey *Writers Week Coordinator*
Josefine Beech *Logistics Manager*
Brigid Connor *Logistics Coordinator*
Rebecca Mordaunt *Education and Community Producer*
Emma Deakin *Education and Community Coordinator*

Hayley Dingwall *Music Producer*
Kura Moeahu *Māori Cultural Adviser*
Gina Moss *Project Manager – Le Grand Continental**
Dilys Grant *Royal Edinburgh Military Tattoo Project Manager*
Suzanne Peri-Chapman *Royal Edinburgh Military Tattoo Project Assistant*
Jamie Wilson *Royal Edinburgh Military Tattoo Logistics Manager*

TECHNICAL

Nick Kyle *Head of Technical and Production*
Ali Kirkpatrick *Technical Administrator*
Danny Hones
Technical Operations Manager
Emily Hakaraia *Head of Sound*
Chris Sanders *Head of Lighting*
Natasha James *Production Manager*
Nick Creech *Production Manager*
Bonnie Burrill *Production Manager*
Martin Streeter *Construction Manager*
Anthony King
Assistant Technical Administrator
Shannon Brosnahan Inglis
Production Assistant

BUSINESS SERVICES TEAM

Denise Brennock
Head of Business Services
Soichi Mukai *Assistant Accountant*
Nigel MacIntyre *Accounts Administrator*
Rowan Aitken *ICT Coordinator*

WITH THANKS TO

The Culture Club Committee
Writers Advisory Group
Workplace Ambassadors
Volunteers and Interns

CAMPAIGN TEAM

Assignment Brand
Springload Digital
Cansino & Co Identity Design
Matt Gleeson Design
Joseph Kelly Photography
Wai Mihinui, Danica Prowse
Assistant Design
Stem Creative Video
Mediastone Media Planning
Sputnik Communications
AdProtocol Digital Advertising
Dot Loves Data Research

With special thanks to our brave
and brilliant audience models:
Taiga Chave, Yong-Le Chong, Maisie
Reweti-Gould, Lucy Aitchison, Esther
Lees, Anna Ronberg, Diogo Freire.

Innovation Leader Partner

weta
DIGITAL

Proud Supporter of the New Zealand Festival

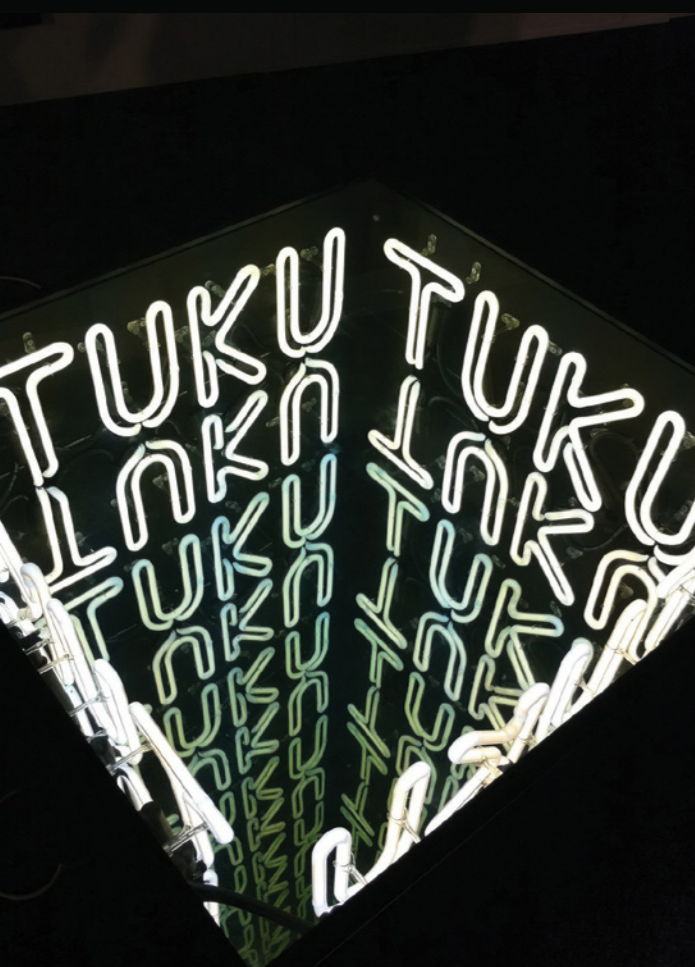
PĀTAKA
ART + MUSEUM

www.pataka.org.nz



BOB JAHNKE

21 Feb – 15 May 2016



Bob Jahnke *Navarro tukutuku* 2014
Courtesy the artist



MAUDE & MILLER
ARTISTS • SOLUTIONS
Proudly supporting Pataka

wetafx.co.nz
wetadigitalvfx on facebook
wetafx on twitter

Congratulations on 30 years
of bringing a world of arts
to New Zealand

NEW ZEALAND
FESTIVAL

Avatar © 2009 Twentieth Century Fox Film Corporation. All rights reserved. The Adventures of Tintin © 2011 Paramount Pictures. All Rights Reserved. The Avengers TM & © 2012 Marvel and Subs. www.marvel.com. The Hobbit: The Desolation of Smaug © 2013 Warner Bros. Entertainment, Inc. and Metro-Goldwyn-Mayer Pictures Inc. The Hobbit: The Battle of the Five Armies © 2014 Warner Bros. Entertainment, Inc. and Metro-Goldwyn-Mayer Pictures Inc. Dawn of the Planet of the Apes™ and © 2014 Twentieth Century Fox Film Corporation. All Rights Reserved. Maze Runner: The Scorch Trials™ and © 2015 Twentieth Century Fox Film Corporation. All rights reserved. ©Weta Digital 2015. All rights reserved.

EAT & DRINK



AMORA HOTEL

170 WAKEFIELD ST
(04) 471 5711 / AMORAHOTELS.COM

Our award-winning Grill restaurant provides 5-star dining in a perfect location. Creating exceptional food is our passion and we pride ourselves on our attention to detail and high level of service.



CHARLEY NOBLE

HUDDART PARKER BUILDING, POST OFFICE SQ
0508 CHARLEY / CHARLEYNOBLE.CO.NZ

A Wellington favourite, serving up fresh, delicious European food straight from the fire pit! Everyone knows that food tastes better when cooked over natural fuels, so indulge in our wondrous array of smoky delights.



THE LIBRARY

53 COURTENAY PL
(04) 382 8593 / THELIBRARY.CO.NZ

Hidden away upstairs in the heart of Courtney Place. Frivolous cocktails, obscure wines, delicious desserts, exceptional cheeses, scrumptious savoury snacks and live music make this a great place to meet before or after a show. Open every day from 5pm.



COCO AT THE ROXY

THE ROXY CINEMA, 5 PARK RD, MIRAMAR
(04) 388 5555 / COCOATHEROXY.CO.NZ

Inspired dining, award-winning cocktails and a passionate team all housed in a beautifully restored art deco cinema. Experience the magic of the movies alongside delicious local fare in this iconic and welcoming environment.



MOTEL

UPSTAIRS, FORRESTERS LN (OFF TORY ST)
(04) 384 9084 / MOTELBAR.CO.NZ

Motel Bar is a hidden tropical tiki oasis serving delicious island-style cocktails where everyone is welcome, from early evening until well into the wee hours. Look out for the colourful street art and bright pink neon lights.



WHITEBAIT

CLYDE QUAY WHARF
(04) 385 8555 / WHITE-BAIT.NZ

Whitebait celebrates the best seasonal local produce and New Zealand seafood – we focus on the freshest ingredients, cooked simply, using our Jospir charcoal fired oven. 2015 winner of *Cuisine's* “Good Food” Best New Restaurant in New Zealand.



CHOW

45 TORY ST
(04) 382 8585 / CHOW.CO.NZ

Fresh Asian cuisine in a relaxed modern environment. Vegetarian and vegan friendly with gluten and dairy-free options, delicious low calorie cocktails, vegan and organic wines. Open every day from noon until midnight. Takeaways always available.

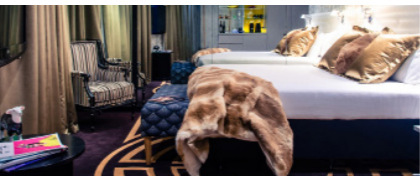


THE LITTLE WAFFLE SHOP

52 COURTENAY PL
THELITTLEWAFFLESHOP.CO.NZ

The cutest little waffle shop in the coolest little capital city. Loved by locals and tourists alike. Give yourself a special treat with sweet flavour toppings like caramel cookie crumble and berry berrylicious. Open late every night of the week.

SLEEP



QT MUSEUM HOTEL

90 CABLE ST / (04) 802 8900
MUSEUMHOTEL.CO.NZ

QT Museum Hotel is New Zealand's most admired design hotel. Located on Wellington's waterfront, it boasts a comprehensive collection of contemporary art, putting it in the world's top 10 of its genre.



WILLIS VILLAGE

142 WILLIS STREET, WELLINGTON
(0800) 508 025 / VILLAGEGROUP.CO.NZ

‘Urban garden’ serviced apartments in the heart of Wellington. Willis Village boasts a unique architectural design, spacious rooms with all the amenities you require, and balconies that overlook the city's sights.



JAMES COOK HOTEL
GRAND CHANCELLOR

147 THE TERRACE / (04) 499 9500
RESERVATIONS@JAMESCOOKHOTEL.CO.NZ

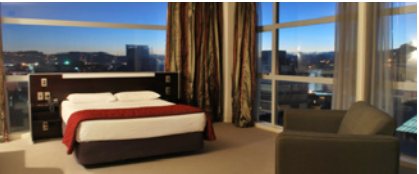
Located in the heart of the city, this 4.5 star hotel offers 268 rooms and suites, 2 restaurants and bars, an in house gym and Infuse Day Spa.



TRINITY HOTEL

166 WILLIS ST / 0508 TRINITY (874 648)
TRINITYHOTEL.CO.NZ

This popular hotel in the cultural hub of the city is ideal for business and leisure travellers. With an outstanding onsite restaurant and Wellington's most spectacular rooftop bar, parking, free WiFi and a gym.



CQ HOTELS WELLINGTON

213-223 CUBA ST / (04) 385 2153
CQWELLINGTON.COM

CQ Hotels Wellington is located right on Cuba St in the vibrant heart of the city. With two beautifully renovated hotels and a café, bar and restaurant – you can't go wrong!

NEW ZEALAND FESTIVAL
ARTICLE MAGAZINE

Read our new digital magazine

festival.co.nz/article

Featuring the world's best arts writers.
Because we love the arts as much as you do.

NEW ZEALAND
SCHOOL
OF
DANCE

PROVIDING
WORLD CLASS
TRAINING IN
CLASSICAL AND
CONTEMPORARY
DANCE



nzschooldofdance.ac.nz

New Zealand School of Dance students photographed by Stephen A'Court.

TOI
whakaari
new zealand
drama school

DEVELOPING INNOVATIVE
AND INTUITIVE STAGE AND
SCREEN PROFESSIONALS
FOR 45 YEARS



toiwhakaari.ac.nz

PUKEAHU NATIONAL WAR MEMORIAL PARK

HOURS

The National War Memorial is open
10am – 5pm daily.

Last Post Ceremony daily at 5pm.

VISIT

The National War Memorial encompasses
the Hall of Memories, Carillon and Tomb
of the Unknown Warrior.

CONTACT

www.Pukeahu.nz
nwm@mch.govt.nz
+ 64 04 385 2496

Greatly
supported by

**Manatū
Taonga**
Ministry
for Culture
& Heritage

**Absolutely Positively
Wellington City Council**
Me Heke Ki Pōneke

Pukeahu National War Memorial Park is the national place
for New Zealanders to remember and reflect on this
country's experience of war, military conflict and
peacekeeping. The Great War Exhibition, created by Sir
Peter Jackson, adjoining the park is a testament to
and commemoration of the New Zealanders who fought
and died on foreign fields during the First World War.

**Pukeahu National War Memorial Park
and The Great War Exhibition are
located on Buckle Street in
central Wellington.**

HOURS

The Exhibition is open
9am – 6pm every day of the year
with the exception of Christmas Day.

VISIT

The Great War Exhibition is housed in the
historic Dominion Museum Building.

CONTACT

www.GreatWarExhibition.nz
info@GreatWarExhibition.nz
+ 64 4 978 2500

**THE GREAT WAR
EXHIBITION**
SO WE ALWAYS REMEMBER




**Museums
Wellington**

Sharing our stories

Join us to find out what makes Wellington
the world's coolest little capital!



Wellington
Museum



Cable Car
Museum



Nairn Street
Cottage



Space
Place

Find out more at museumswellington.org.nz

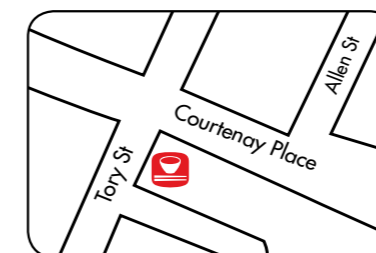


FRESH ASIAN CUISINE



CHOW

Fresh Asian cuisine, in a relaxed modern
environment. Vegan and vegetarian friendly
with dairy and gluten free options.



45 Tory St
7 Days Noon - Midnight
04 382 8585

Free Wifi / Corporate catering
Large bookings welcome / Set menu options
Takeaways available
Hotel chargebacks by arrangement



 facebook.com/chowwellington
 @chowwellington #chowgram
 @chowwellington
 @chowwellington

www.chow.co.nz



GET UP CLOSE

weta WORKSHOP

CAVE & TOUR

TOURS RUN 9.30AM – 5PM, 7 DAYS

Learn about the artistry behind 20 years of creativity. Discover creatures, costumes, miniatures and more from *The Hobbit*, *The Lord of the Rings*, *Avatar*, *King Kong*, *District 9* and others.

BOOK NOW

www.wetaworkshop.com/tours
or at Wellington iSITE



Nau mai, haere mai - Welcome to Karaka Cafe

Located on Wellingtons Waterfront, close to Te Papa, Karaka Cafe offers delicious breakfast, lunch and platter menus with a modern twist on "Maori kai/food". Enjoy the ambiance of our beautiful indoor environment, or the outside terraced grassed areas on Frank Kitts lagoon. Our cafe is located directly beside the "Wharewaka" which houses two carved wakas, open for viewing daily. A "must do" for our locals and visitors to Te Whanganui-a-tara/Wellington.

Open 7 days
Phone: (04) 916 8369 • www.karakacafe.co.nz

Karakacafe

nau mai haere mai
welcome



IT'S YOUR BIT ON THE SIDE

12 FEB - 5 MAR 2016

FRINGE.CO.NZ




HEADS UP

19TH-20TH
MARCH
2016

CUBADUPA

www.cubadupa.co.nz




KALEIDOSCOPES

CHAMBER MUSIC NEW ZEALAND

CONCERT SEASON 2016

chambermusic.co.nz



Chamber Music
New Zealand

THE DOWSE
ART MUSEUM

A FESTIVAL
OF THE ARTS
EVERY DAY
OF THE YEAR

45 Laings Road, Lower Hutt | dowse.org.nz



EAST By WEST

Stunning views of Wellington

While you are in Wellington visit the historic Matiu Somes Island, enjoy cafes and galleries in Days Bay or take a trip around the harbour to experience stunning views of Wellington.

eastbywest.co.nz / Metlink: 0800 801 700

springload



88% of Kiwis
browse the web
on their phone.

Don't lose any more customers!
Talk to us about making your digital
experience work across any device.

springload.co.nz giving the web a good kick up the arts

SHAPESHIFTER SCULPTURE 2016

**26 Feb —
20 Mar 2016**

**Civic Gardens
Lower Hutt**

shapeshifter.org.nz



ACCESS INFORMATION

It's *your* Festival and we'll do our best to make sure access is never a problem for you. Let ticketing staff know your requirements at the time of booking so they can make the necessary arrangements. If you have any questions about accessibility, please phone the Festival on (04) 903 5452 or email ticketing@festival.co.nz.

BOOKINGS

If you have special seating requirements such as wheelchair access, hearing difficulties or you require companion seating, please phone Ticketek on 0800 842 538. If you have any problems making a booking, please contact the Festival on (04) 903 5452 or ticketing@festival.co.nz.

TRANSPORT INFORMATION

Information about accessible parking and public transport in Wellington is available at festival.co.nz/transport.

PHYSICAL ACCESS

For more details on the access available at specific venues, you can go to festival.co.nz/access.

All venues have limited wheelchair seating. Designated wheelchair spaces (where available) are sold at the lowest non-restricted view price in the house for that performance. We also offer one companion seat per wheelchair space at the same price.

FESTIVAL-GOERS WHO ARE DEAF OR HARD OF HEARING

There are hearing loops available at the Michael Fowler Centre and St James Theatre. More information about hearing loops is available at festival.co.nz/access.

Please inform ticketing staff when booking if you wish to sit in a certain area of the venue.

NZSL/AUDIO DESCRIPTION



Shows listed with these logos will be translated into New Zealand Sign Language or audio described. Audio description is auditory narration that is particularly useful for the blind or vision impaired where visual elements (such as scenes, settings, actions and costumes) are described during gaps in dialogue.

SUPPORTED BY



TIX FOR TWENTY

SEE A FESTIVAL SHOW FOR \$20

In the lead up to the Festival we'll offer tickets to selected shows for just \$20. You will need to sign up to the Tix for Twenty waitlist at festival.co.nz/tixfortwenty before 26 February 2016 to join and then like our Facebook page to keep an eye out for more details.

TROUBLE READING THE SMALL PRINT? FESTIVAL INFORMATION IN ALTERNATIVE FORMATS

This programme brochure is also available as a Word document in simple large print, or a screen reader-friendly PDF. To request a copy of either, please contact the Festival on (04) 903 5452 or ticketing@festival.co.nz.

2016 CALENDAR

				FEB ▶		MAR ▶				
PAGE	SHOW	VENUE	FRI 26	SAT 27	SUN 28	MON 29	TUE 1	WED 2	THU 3	FRI 4
SPECTACULAR / FAMILY										
24	FOR THE BIRDS	OTARI-WILTON'S BUSH							From 8pm	From 8pm
10	LE GRAND CONTINENTAL® OPENING NIGHT	CIVIC SQUARE	8.30pm							
64	THE CONTACT FESTIVAL PLAYGROUND	FRANK KITTS PARK		2–10pm	2–10pm		2–10pm	2–10pm	2–10pm	2–10pm
THEATRE / DANCE / CIRQUE										
12	CAFÉ MÜLLER / THE RITE OF SPRING	ST JAMES THEATRE								
66	CHALK ABOUT	HANNAH PLAYHOUSE, AND ON THE ROAD*					6pm	6pm		6pm
30	CINEASTAS	OPERA HOUSE								
40	COMPLEXITY OF BELONGING	ST JAMES THEATRE								
28	DEAD DOG IN A SUITCASE	OPERA HOUSE	8pm	8pm	1.30pm / 7.30pm	7pm	7pm	7pm		
34	EVERY BRILLIANT THING	HANNAH PLAYHOUSE						8pm	8pm	8pm
26	LA VERITÀ	ST JAMES THEATRE						7.30pm	7.30pm	7.30pm
37	NOT IN OUR NEIGHBOURHOOD	HANNAH PLAYHOUSE	6pm	2pm / 6pm	6pm					
38	PAGE TURNERS	UPSTAIRS AT ST JAMES THEATRE								
35	SMALL METAL OBJECTS	UNDER THE SAILS, OUTSIDE TSB ARENA								
42	SPEED OF LIGHT	ST JAMES THEATRE	7.30pm	1.30pm / 7.30pm	4pm					
32	TE PŌ	SOUNDINGS THEATRE, TE PAPA					7.30pm	7.30pm	7.30pm	7.30pm
39	THE ACB WITH HONORA LEE	CIRCA THEATRE		6.30pm	4pm		6.30pm	6.30pm	6.30pm	6.30pm
36	THE DEVIL'S HALF-ACRE	HANNAH PLAYHOUSE								
38	THE GOD THAT COMES	HANNAH PLAYHOUSE								
44	THE KISS INSIDE	OPERA HOUSE								8pm
37	THE WOMAN WHO FORGOT	CENTRAL WELLINGTON						12pm / 6pm	12pm / 6pm	12pm / 6pm
66	WAVES	CIRCA THEATRE, AND ON THE ROAD*						(7pm*	7pm*)	
MUSIC										
18	A NIGHT WITH JAZZ AT LINCOLN CENTER ORCHESTRA	MICHAEL FOWLER CENTRE								
78	ARCHIE ROACH	PĀTAKA ART + MUSEUM, PORIRUA		(7.30pm*)						
62	BOTH SIDES NOW	SHED 6								
48	BRASS POPPIES	SHED 6							7.30pm	7.30pm
61	CALEXICO	OPERA HOUSE								
46	CONCERTO ITALIANO	MICHAEL FOWLER CENTRE		7.30pm						
55	DAME KIRI TE KANAWA WITH VOICES NZ CHAMBER CHOIR	MICHAEL FOWLER CENTRE								
60	DIRTSONG	MICHAEL FOWLER CENTRE			7pm					
18	JAZZ AT LINCOLN CENTER ORCHESTRA WITH THE NZSO	MICHAEL FOWLER CENTRE								
62	L'ORCHESTRE D'HOMMES-ORCHESTRES	SHED 6								
56	MIYATA-YOSHIMURA-SUZUKI TRIO	ST ANDREW'S ON THE TERRACE, AND ON THE ROAD*			3pm	(7.30pm*)				
63	MODERN MĀORI QUARTET	SHED 6, AND ON THE ROAD*								
52	NO MAN'S LAND	MICHAEL FOWLER CENTRE						7.30pm		
54	REIMAGINING THE CLASSICS	MICHAEL FOWLER CENTRE								
51	RELICT FURIES	WELLINGTON CATHEDRAL OF ST PAUL								
57	SILA: THE BREATH OF THE WORLD	CIVIC SQUARE								
63	SORCERESS	SHED 6								
22	SUFJAN STEVENS	MICHAEL FOWLER CENTRE								
58	THE CHILLS	SHED 6								
61	THE PHOENIX FOUNDATION	SHED 6								
58	THE VERLAINES	SHED 6								
67–71 WRITERS WEEK – HIGHLIGHTS										
68	HENRY MARSH	MICHAEL FOWLER CENTRE								
69	HIGH TEA: THE ROGER HALL ROAST	HIPPOPOTAMUS RESTAURANT, QT MUSEUM HOTEL								
67	MIRANDA JULY: LOST CHILD!	OPERA HOUSE								
79	ROBERT DESSAIX ON ENID BLYTON	THE DOWSE, LOWER HUTT*								
73–77 VISUAL ARTS – HIGHLIGHTS										
73	RIVER OF FUNDAMENT	EMBASSY THEATRE								
80 ARTIST TALKS – HIGHLIGHTS										
80	DANCING FOR YOUR LIFE	ST JAMES THEATRE								

HOW TO BOOK

(See full details page 93)

ONLINE

FESTIVAL.CO.NZ

PHONE

0800 TICKETEK (842 538)

IN PERSON

TICKETEK AGENCIES NATIONWIDE

2016 CALENDAR

[illegible]

JOIN THE CONVERSATION

 NZFESTIVAL #KICKUPTHEARTS

(*) *Festival On The Road* (see page 78)

MAP AND VENUE INFORMATION

FESTIVAL VENUES

- | | | |
|---------------------|--|---------------------------------------|
| 1 Academy Galleries | 9 Hannah Playhouse | 16 St James Theatre/
Festival Bar |
| 2 Adam Art Gallery | 10 Michael Fowler Centre | 17 Te Papa/Soundings Theatre |
| 3 BATS Theatre | 11 QT Museum Hotel | 18 TSB Bank Arena |
| 4 Circa Theatre | 12 New Zealand Portrait
Gallery (Shed 11) | 19 Wellington Cathedral
of St Paul |
| 5 City Gallery | 13 Opera House | 20 Wellington Museum |
| 6 Civic Square | 14 Shed 6 | 21 Wellington Railway Station |
| 7 Embassy Theatre | 15 St Andrew's on The Terrace | |
| 8 Frank Kitts Park | | |

TICKET OUTLETS

- | |
|---|
| 8 Ticketek: Frank Kitts Park |
| 10 Ticketek: Michael Fowler Centre |
| 21 Ticketek: Wellington Railway Station |
| 16 Ticketek: St James Theatre |
| 7 Embassy Theatre (Writers Week only) |

- 9P Primeparking location
 P Parking
 i Tourist information
 T Taxi rank

VENUE TIPS

- Arrive early, as most venues won't be able to seat late-comers and you will not be entitled to a refund or transfer.
- The Box Office will usually be open one hour before the show for last-minute ticket sales and ticket collection.
- If collecting tickets, be there at least 20-30 minutes before the performance starts.
- A venue will generally open for seating 30 minutes prior to the start of the show.
- Remember to switch off your mobile phone prior to the start of the show.
- Recording or photography during the performance is not permitted.

From outside Wellington?

For travel, accommodation and tourist information, visit festival.co.nz/info or wellingtonnz.com

Wellington Combined Taxis
(04) 384 4444

FESTIVAL PARTNER



Preferred parking supplier
primeproperty.co.nz



刘建华 OPENS 20 FEB 2016 LIU JIANHUA TRANSFER



FREE ENTRY
dowse.org.nz
45 Laings Road
Lower Hutt

From the Venice Biennale to The Dowse Art Museum — this is the first time the work of Liu Jianhua, one of China's best known contemporary artists, will be shown in New Zealand.

Liu Jianhua, *Squares at Pace Beijing*, 2015.
Photo courtesy of Liu Jianhua Studio



THE ROYAL EDINBURGH MILITARY TATTOO



INCLUDING PERFORMANCES FROM

Top Secret (Switzerland) | Royal Marine Band | Royal Air Force Band | Welsh Guards Army Band
The Republic of Fiji Military Forces Band | HM The King of Norway's Guards Band and Drill Team
New Zealand Army Band | Auckland Police Pipe Band | Lochiel Marching Drill Team | More to be announced...

Thursday Selling Fast
Friday Sold Out
Saturday Sold Out
Sunday Selling Fast

**WESTPAC STADIUM
WELLINGTON**

Book now at festival.co.nz

18 – 21 FEB 2016

Presented by
**NEW ZEALAND
FESTIVAL**

Supported by
**Absolutely Positively
Wellington** City Council
Me Heke Ki Pōneke